

Milesight

QUICK START GUIDE

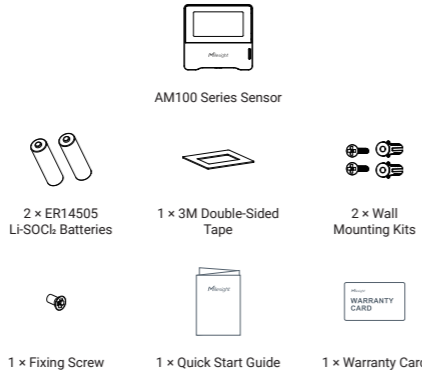
INDOOR AMBIENCE MONITORING SENSOR

LoRaWAN®

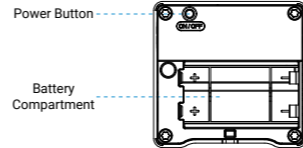
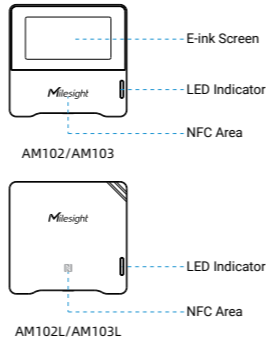
AM100 Series



1. Packing List



2. Hardware Introduction



3. Button & Traffic Light Indication

Function	Action	LED (Enabled)
Power ON/OFF	Press and hold the power button for more than 3 seconds.	Power On: Off → On
		Power Off: On → Off
Reset to Factory Default	Press and hold the power button for more than 10 seconds.	Quickly Blinks
Threshold Alarm (AM103/AM103L Only)	When CO ₂ concentration exceeds the threshold.	Polluted: Blinks
		Bad: Blinks

4. Emoticon Descriptions (AM103 Only)

Emoticon	Description
	You are having a healthy environment!
	When CO ₂ concentration exceeds the Polluted threshold.
	When CO ₂ concentration exceeds the Bad threshold.

Milesight



Quick Start Guide



Cloud App

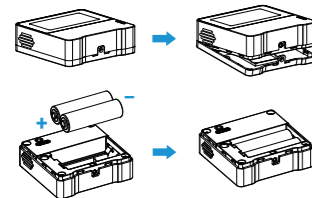
All software & files can be downloaded from <https://www.milesight-iot.com/documents-download/>

Better Inside, More in Sight

Milesight IoT Co., Ltd. | www.milesight.com

5. Power Supply

Remove the rear cover of device to install the batteries, do not reverse the direction of batteries.



Note

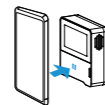
- The device can be powered by ER14505 Li-SOCl₂ batteries.
- The battery should be removed from the device if not to be used for an extended period. Otherwise, the battery might leak and damage the device. Never leave a discharged battery in the battery compartment.

6. Configuration Guide

1. Download "Milesight ToolBox" App on an NFC-supported smartphone.



2. Open "Milesight ToolBox" App and attach the NFC area of the smartphone to the device. Click "NFC Read" to read/write the device until the app successfully shows a prompt. It's suggested to change the default password for security reasons. (Default password: 123456)

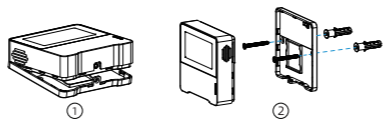


Besides, it can be configured by dedicated NFC reader provided by Milesight IoT.

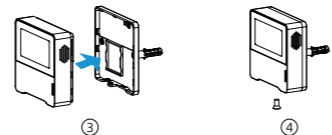
7. Installation

Fixed by Screws

1. Remove the back cover of the device, screw the wall plugs into the wall and fix the cover with screws on it, then install back the device.



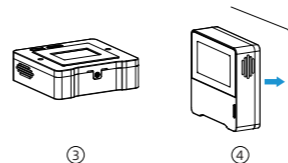
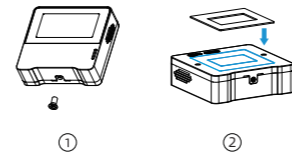
2. Fix the bottom of the device to the cover with a fixing screw.



Fixed by Tape

1. Fix the bottom of the device to the rear cover with a fixing screw.

2. Paste 3M double-sided tape to the back of device, then tear the other side and place the device on a flat surface.



8. FCC Statement

Any changes or modifications not expressly approved by the party responsible for compliance could void the user's authority to operate the equipment. This device complies with part 15 of the FCC Rules. Operation is subject to the following two conditions:

- (1) This device may not cause harmful interference, and.
- (2) This device must accept any interference received, including interference that may cause undesired operation.

Note: This equipment has been tested and found to comply with the limits for a Class B digital device, pursuant to part 15 of the FCC Rules. These limits are designed to provide reasonable protection against harmful interference in a residential installation. This equipment generates, uses and can radiate radio frequency energy and, if not installed and used in accordance with the instructions, may cause harmful interference to radio communications. However, there is no guarantee that interference will not occur in a particular installation. If this equipment does cause harmful interference to radio or television reception, which can be determined by turning the equipment off and on, the user is encouraged to try to correct the interference by one or more of the following measures:

- Reorient or relocate the receiving antenna.
- Increase the separation between the equipment and receiver.
- Connect the equipment into an outlet on a circuit different from that to which the receiver is connected.
- Consult the dealer or an experienced radio/TV technician for help.

FCC Radiation Exposure Statement:

This equipment complies with FCC radiation exposure limits set forth for an uncontrolled environment. This equipment should be installed and operated with minimum distance 20cm between the radiator & your body. This transmitter must not be co-located or operating in conjunction with any other antenna or transmitter.

客户	
机型	AM100系列
材质	80g双胶纸
尺寸	63x63mm
工艺	折页版
编码	44.005.000312
版本	V2.0