



# QUICK START GUIDE

UG6x



Cloud App



Quick Start Guide



All software & files can be downloaded from  
<https://www.milesight-iot.com/documents-download/>

## Better Inside, More in Sight

Milesight IoT Co., Ltd. | [www.milesight-iot.com](http://www.milesight-iot.com)

LoRaWAN<sup>®</sup> Gateway



---

## Table of Contents

1.Packing List.....	2
2.Hardware Introduction.....	3
3.Fitting Installation.....	5
4.PoE Supply.....	8
5.Gateway Installation.....	8
6.Web GUI Access.....	10

## 1. Packing List

Please check the package contents to verify that you have received the items below.

### UG63



UG63



Ethernet Cable



Wall Mounting Kits



Quick Start Guide



Warranty Card

Type-C Cable &  
Power Adapter (Optional)

### UG65



UG65



Mounting Bracket



Ethernet Cable

DC Jack Power  
AdapterLoRa Antenna  
(EA version included)

Bracket Fixing Screws



Wall Mounting Kits



Quick Start Guide



Warranty Card

### UG67



UG67



LoRa Antennas



Mounting Bracket



Cable Gland



SIM Dust Cover



Wall Mounting Kits



Antenna Clamp Kit

Antenna Coaxial  
Cable

PoE Injector

DC Power  
Cable

Hose Clamp



Quick Start Guide



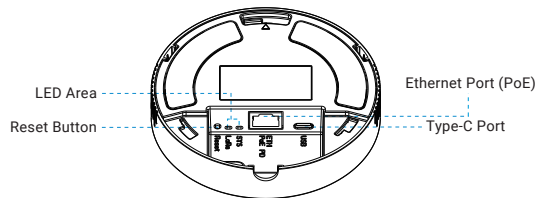
Warranty Card

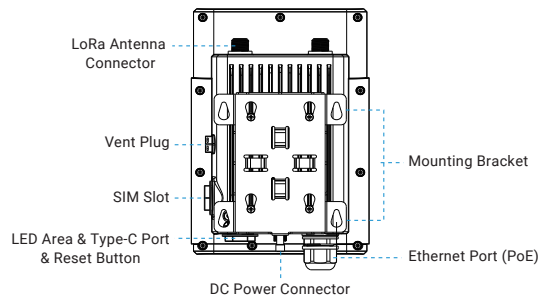
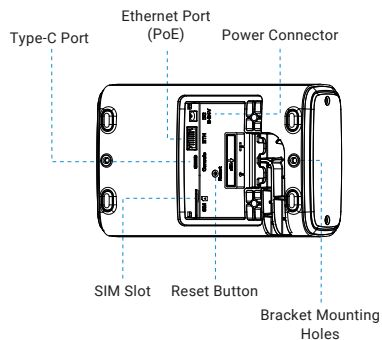
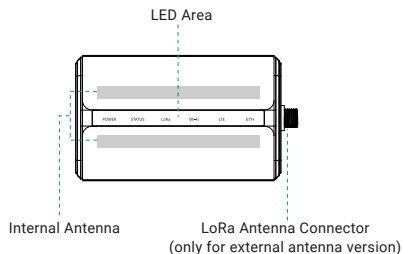


If any of the above items is missing or damaged, please contact your sales representative.

## 2. Hardware Introduction

### UG63



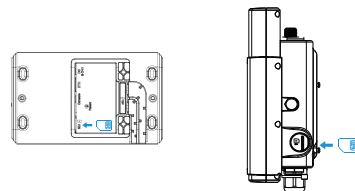


#### How to reset the device to factory default?

Press and hold the reset button for more than 5 seconds until STATUS/SYS LED is rapidly blinking.

### 3. Fitting Installation

**Step 1:** Insert the SIM card into the device according to arrows as follows. If you need to take out the SIM card, press the SIM card and it will pop up automatically.



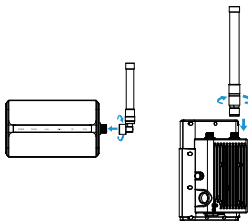


**Note:**

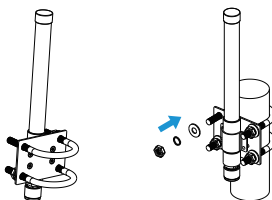
- UG6x does not support hot plugging (also called hot swapping). Please turn off the power before you insert or take off cards.
- Please tighten the SIM dust cover of UG67 with wrench to prevent water into the equipment.

**Step 2:** UG6x supports multiple LoRa antenna types. For internal antenna mode, keep device positive outwards to ensure it can get good signal. For single external antenna mode, rotate the antenna into the antenna connector and ensure the antenna is installed vertically.

**Note:** For UG67, the external antenna must be installed on ANT1 connector.



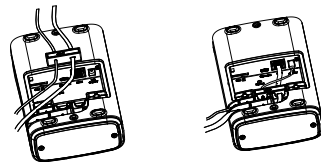
For two external antennas mode (UG67), rotate the antenna coaxial cable to one of the connectors (ANT1 is recommended), then connect the antenna to coaxial cable. When fixing the antenna, pass the antenna through the clamp and fix with screws, then wrap the U-bolt around a pole and fix it to clamp with nuts and other accessories.



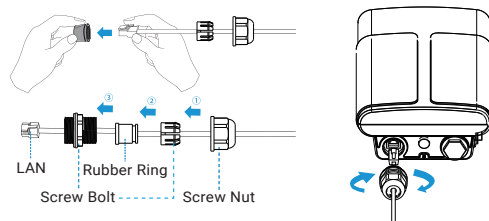
www.milesight-iot.com

**Step 3:** Install the power cable and Ethernet cable accordingly.

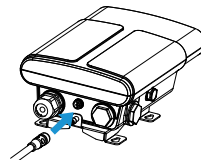
**UG65:** After connecting the Ethernet cable and power cable to corresponding interfaces, you can pass them through the waterproof silicone and slide into the grooves. Then screw the protective cover back to the device.



**UG67:** Pass the Ethernet cable through the cable gland and rotate the cable gland to gateway, then tighten the cable gland with wrench.



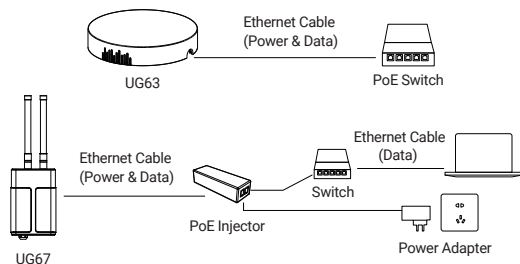
For DC power supply, remove the protective cap of power connector and rotate the DC power cable into the power connector.



www.milesight-iot.com

## 4. PoE Supply

UG6x can be powered by 802.3af standard PoE injector or other PoE devices. Besides, they support DC supply via different kinds of power interfaces.

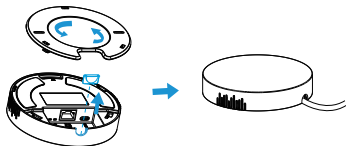


## 5. Gateway Installation

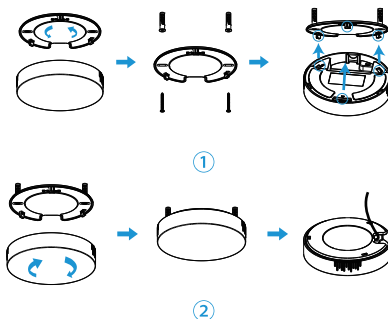
Before you get started, make sure all fittings are installed and the power supply is disconnected.

### UG63

**Desktop:** Take off the baffle and mounting plate on the back of the device, then you can place the device on the desktop.



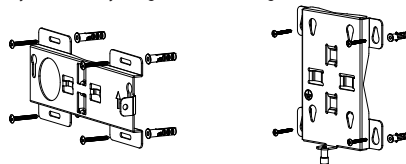
**Ceiling or Wall Mounting:** Take off the mounting plate on the back of the device, drill 2 holes on the wall or ceiling according to the mounting plate, then fix the wall plugs into the wall or ceiling. Fix the mounting plate to the wall plugs with screws, then turn the device clockwise to lock it to the mounting plate.



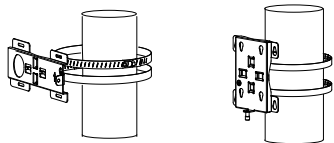
### UG65 & UG67

#### Step 1: Mounting Bracket Mounted

**Wall mounting:** Align the mounting bracket horizontally to the desired position on the wall, use a marker pen to note four mounting holes on the wall, and then remove the mounting bracket from the wall. Drill four holes with a depth of 32mm by using your drill with a 6mm drill bit on the positions you marked previously on the wall and insert four wall plugs into the holes respectively. Mount the mounting bracket horizontally to the wall by fixing the wall mounting screws into the wall plugs.

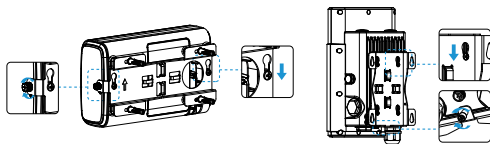


**Pole mounting:** Straighten out the hose clamp and slide it through the rectangular rings in the mounting bracket, wrap the hose clamp around the pole. After that use a screwdriver to tighten the locking mechanism by turning it clockwise.



### Step 2: Gateway Mounted.

Screw the bracket mounting screws behind the device and hang the device to the mounting bracket via bracket mounting screws on the back of device.



## 6. Web GUI Access

UG6x provides web-based configuration interface for management. If this is the first time you configure the gateway, please use the default settings below:

ETH IP Address: **192.168.23.150**

Wi-Fi IP Address: **192.168.1.1**

Wi-Fi AP: **Gateway\_\*\*\*\*\***

Username: **admin**

Password: **password**

Browser: **Chrome (recommended)**

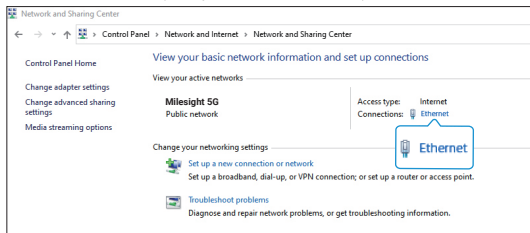
Here are 2 ways of accessing the web GUI:

### Note:

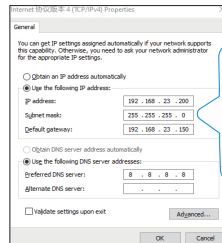
• **Wireless Mode:** Enable Wireless Network Connection on your computer and search for access point "Gateway\_\*\*\*\*\*" to connect it. Then, type 192.168.1.1 to your Internet browser to log in the web GUI of UG6x. This mode only works with UG65 and UG67.

• **Wired Mode:** Connect UG6x to your computer via Ethernet port and configure the IP address of computer manually, then type 192.168.23.150 to your browser to log in the web GUI of UG6x. You can follow the steps below to configure computer IP address manually based on Windows 10 system.

A. Go to "Control Panel" → "Network and Internet" → "Network and Sharing Center", then click "Ethernet" (It may have different names).



B. Go to "Properties" → "Internet Protocol Version 4 (TCP/IPv4)" and select "Use the following IP address", then assign a static IP manually within the same subnet of UG6x.



# LoRaWAN<sup>®</sup> Gateway

Thank you  
for choosing  
Milesight Product

Milesight IoT Co., Ltd.

客户	
机型	UG6X
材质	200g铜版纸+80g双胶纸
尺寸	120x85mm
工艺	封面覆哑膜（翻页版）
编码	44.005.000117
版本	V1.2