



Recessed Installation Guide

Applied in Dome Models of Mini, Pro and PTZ Series

A Milesight Technology Moment

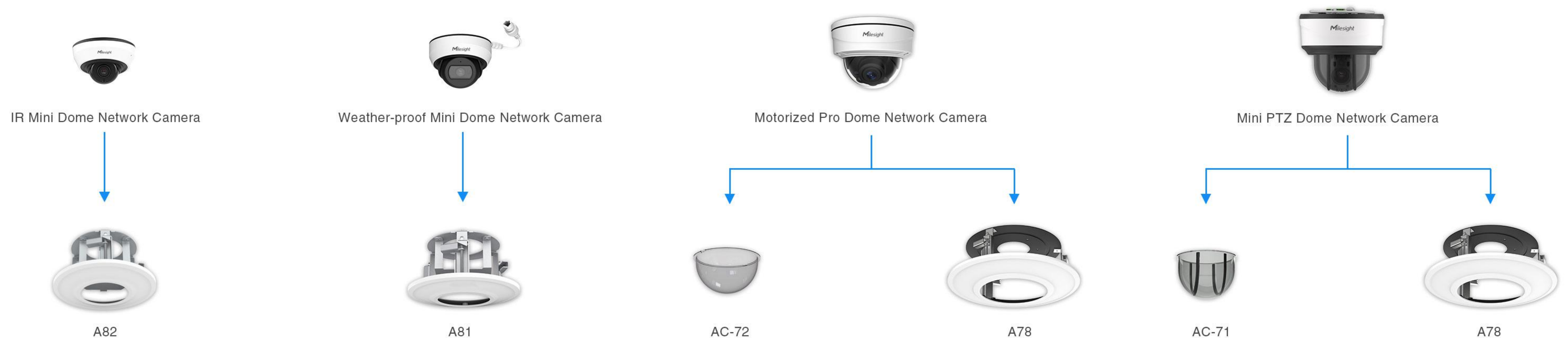
Introduction

Milesight offers several kinds of Recessed Mount --- A81, A82 and A78. A81 is compatible with the cable out version of Weather-proof Mini Dome Network Camera, A82 is for IR Mini Dome Network Camera, while A78 is used for Motorized Pro Dome Network Camera & Mini PTZ Dome Network Camera. The camera can be tucked into the ceiling with only its dome part protruding while not interrupting the visual appearance of the building interior. With smoked dome cover AC-72(compatible with Motorized Pro Dome Camera) and AC-71(compatible with Mini PTZ Dome Camera) available, you can easily hide the direction of camera lens for not letting people see where it is pointing. Find out the step-by-step recessed installation instructions for Milesight Mini, Pro and PTZ Dome Network Cameras in the following part.



Full Coverage of Recessed Installation in Milesight Dome Cameras

Milesight offers several kinds of Recessed Mount --- A81, A82 and A78. A81 is compatible with the cable out version of Weather-proof Mini Dome Network Camera, A82 is for IR Mini Dome Network Camera, while A78 is used for Motorized Pro Dome Network Camera & Mini PTZ Dome Network Camera. The camera can be tucked into the ceiling with only its dome part protruding while not interrupting the visual appearance of the building interior. With smoked dome cover AC-72(compatible with Motorized Pro Dome Camera) and AC-71(compatible with Mini PTZ Dome Camera) available, you can easily hide the direction of camera lens for not letting people see where it is pointing. Find out the step-by-step recessed installation instructions for Milesight Mini, Pro and PTZ Dome Network Cameras in the following part.



Recessed Installation of Weather-proof Mini Dome Network Camera

Camera Overview:



A81 Recessed Mount Contents:



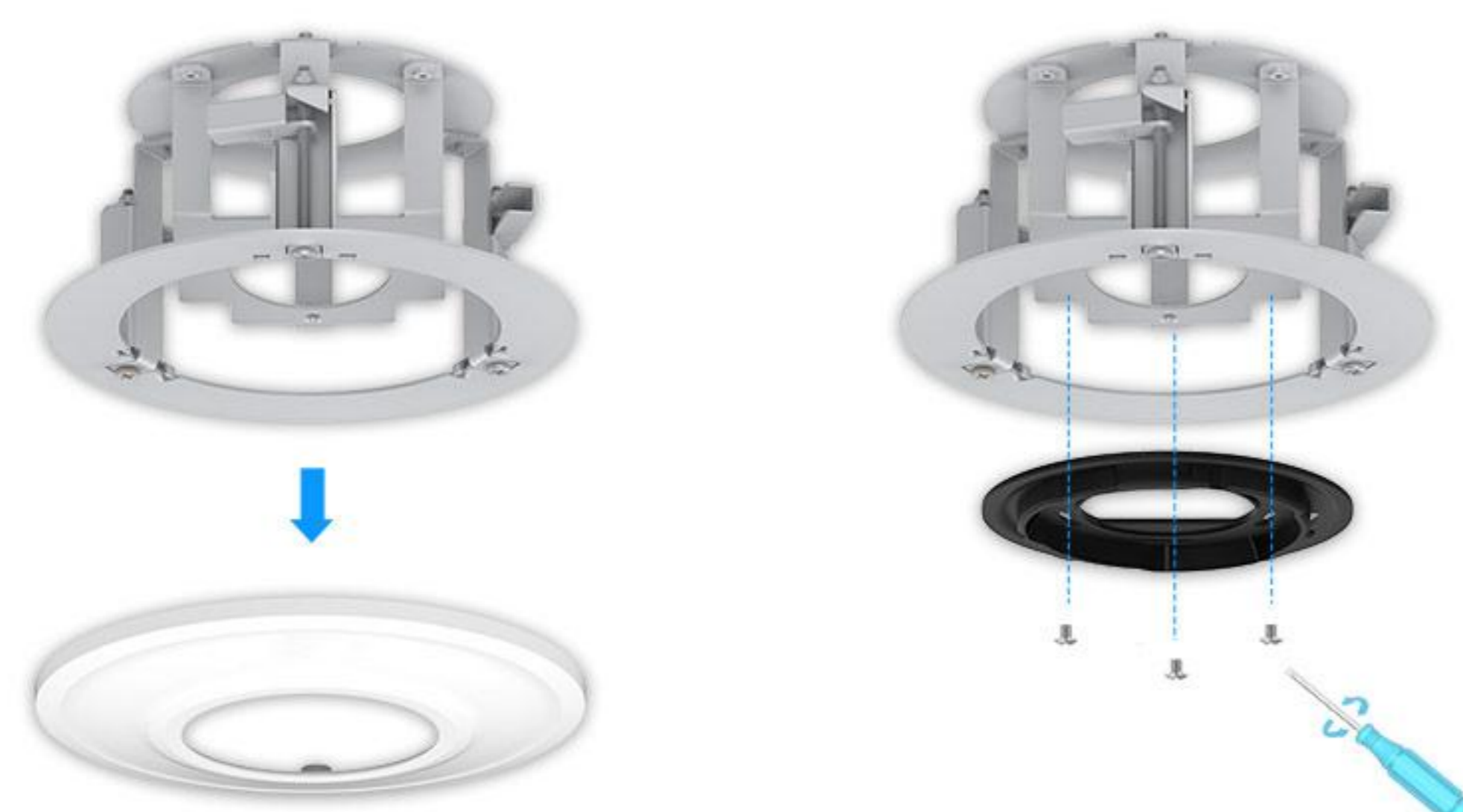
Step 1: Ensure that the intended installed ceiling is suitable. The thickness of the ceiling should be less than 30mm. Then drill a round hole with a diameter of 150mm;



Step 2: Remove the dome cover, loosen the set screw and take the mounting bracket on the camera base off;



Step 3: Take the magnetic ring cover off and lock the mounting bracket to the mounting adaptor by tightening 3 screws;



Step 4: Rotate the camera to the mounting bracket and make sure it is positioned correctly;



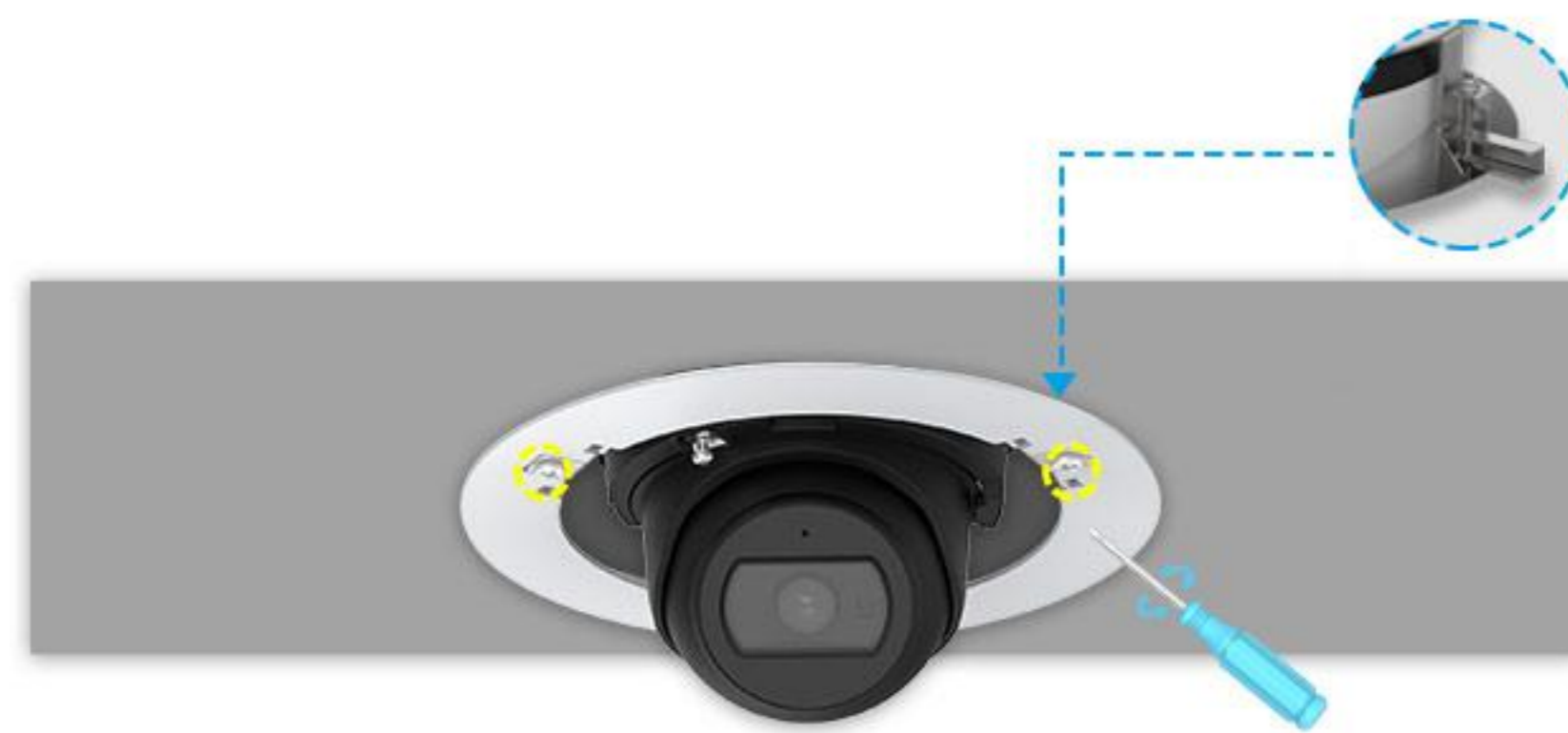
Step 5: Tighten the loosened set screw in Step 2 to lock the camera with the mounting adaptor;



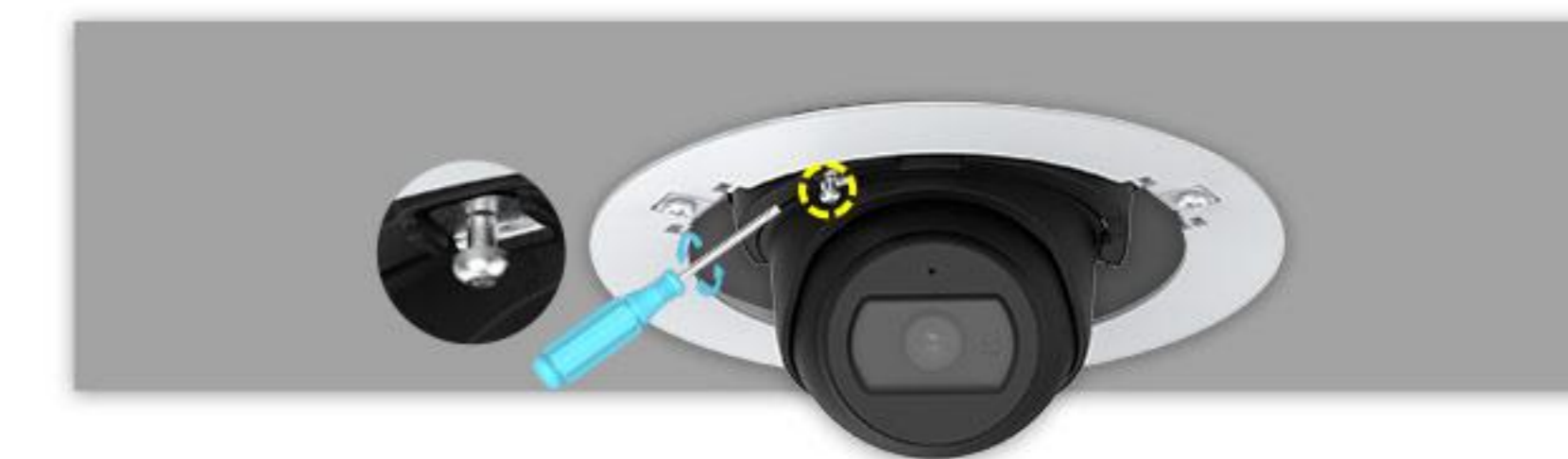
Step 6: Connect the cable and insert the camera with the mounting adaptor to the ceiling;



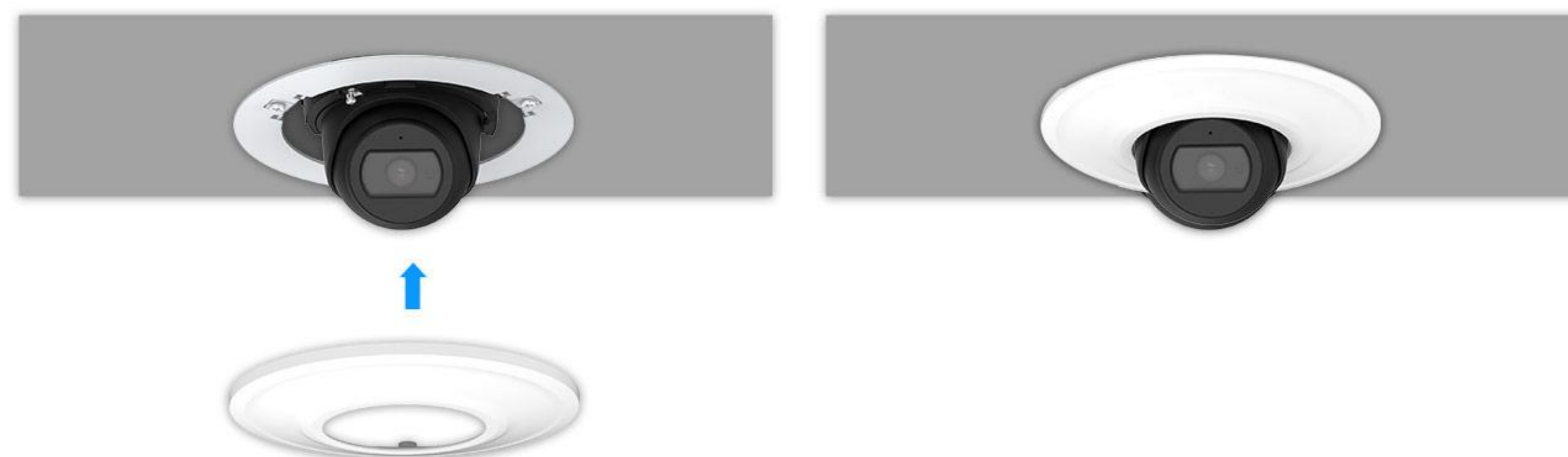
Step 7: Tighten the 3 screws on the mounting adaptor to fasten the camera to the ceiling. The support brackets will move to the designated position when tightening screws;



Step 8: Loosen the clamp screw on the camera, adjust the lens to the correct direction and then tighten the clamp screw;



Step 9: Put the magnetic ring cover on to complete the installation.



Recessed Installation of Motorized Pro Dome Network Camera

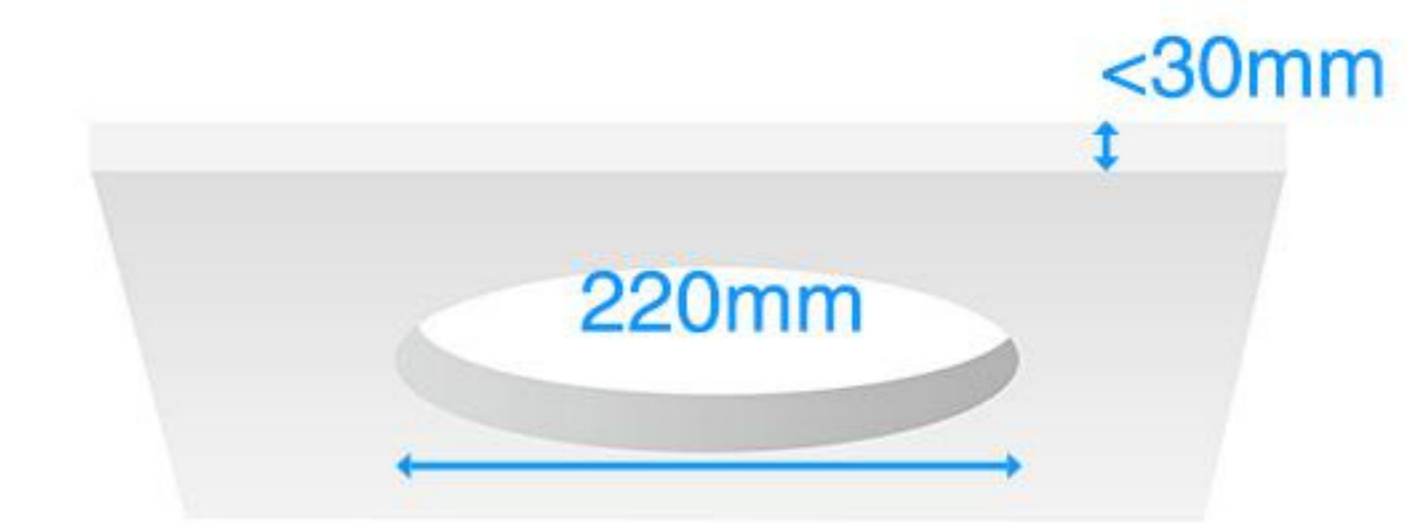
Camera Overview:



A78 Recessed Mount Contents:



Step 1: Ensure that the intended installed ceiling is suitable. The thickness of the ceiling should be less than 30mm. Then drill a round hole with a diameter of 220mm;



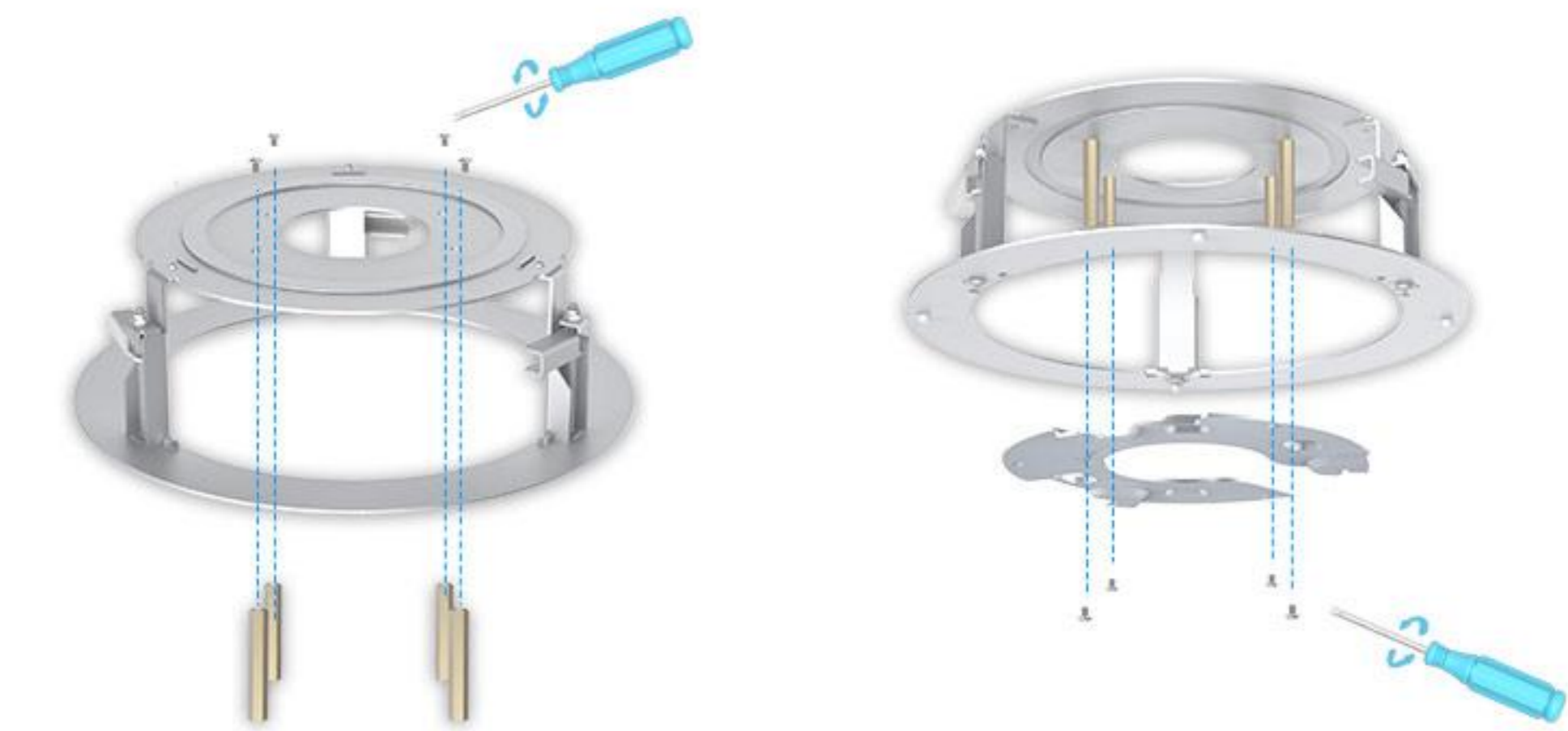
Step 2: Assemble the mounting adaptor. Stand the 3 legs on Part A of mounting adaptor up and then put the Part B on it and tighten the 3 screws;



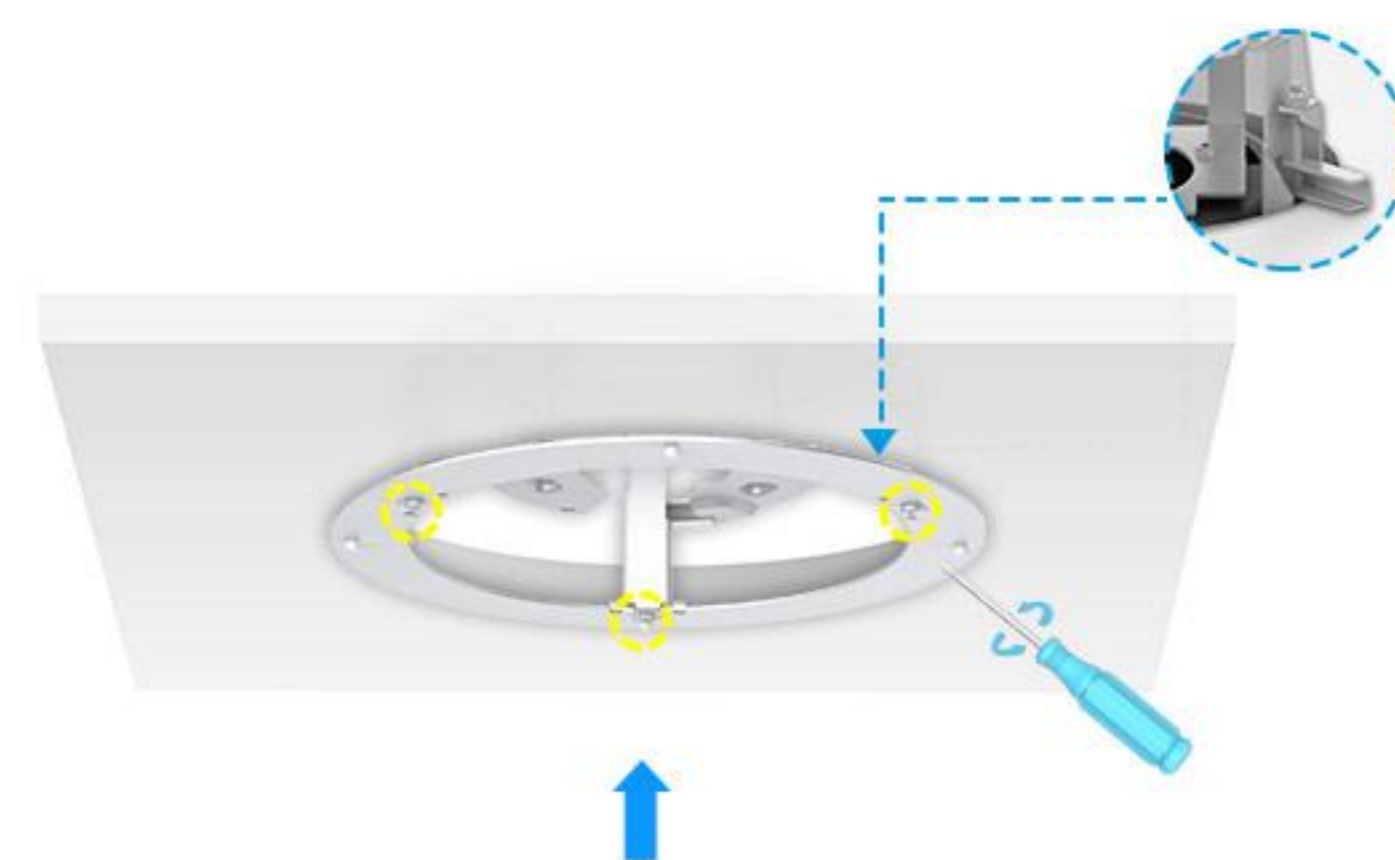
Step 3: Remove the dome cover by loosening 3 screws on it, loosen the set screw and take the mounting bracket on the camera base off;



Step 4: Screw the 4 copper columns to mounting adaptor by tightening 4 screws and lock mounting bracket to them by tightening the other 4 screws;



Step 5: Insert the mounting adaptor into the ceiling and tighten the 3 screws on the mounting adaptor to fasten it to the ceiling. The support brackets will move to the designated position when tightening screws;



Step 6: Open the camera body by loosening the shoulder screw;



Step 7: Remove the flange grommet in the cable entry hole and pass the cable through the entry hole;



Step 8: Place the piercing cap on the cable and then push the cable through the waterproof flange grommet. Pull the flange grommet with the cable into the entry hole and make sure it is securely seated in the inside and outside of the cable entry hole;



Step 9: Connect the cable and then attach the camera body to the base by tightening the loosened shoulder screw on Step 6;



Step 10: Rotate the camera anticlockwise to the mounting bracket and make sure it is positioned correctly. Then lock the camera with the mounting adaptor by tightening the loosened set screw on Step 3;



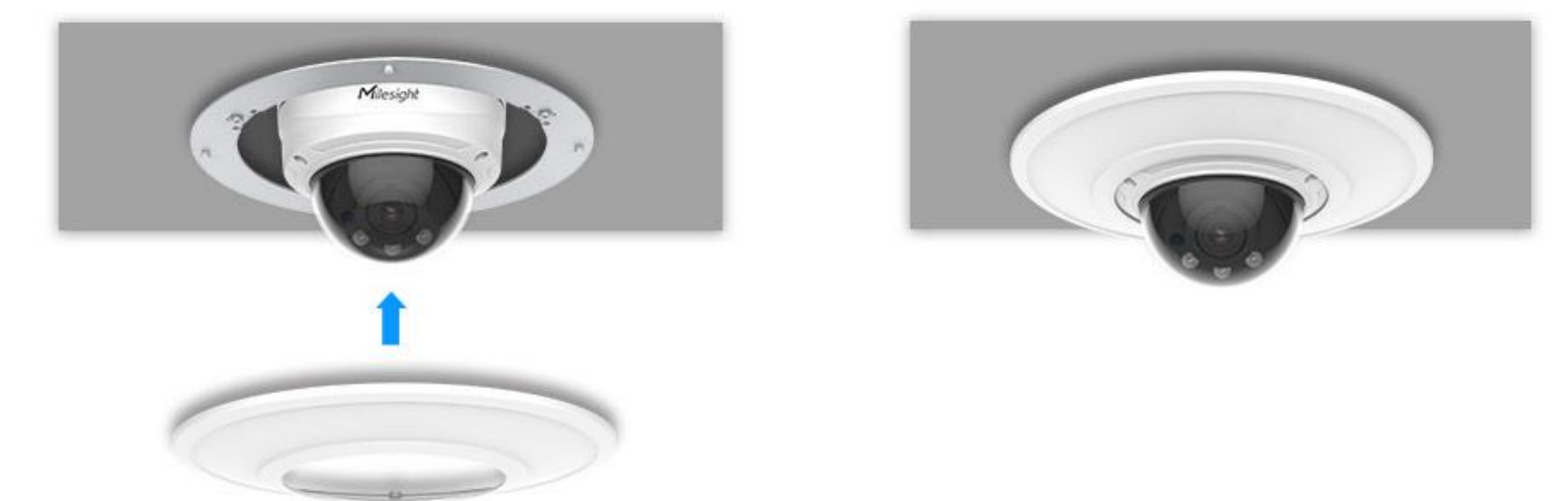
Step 11: Loosen the clamp screw on the camera, adjust the lens to the correct direction and tighten the clamp screw;



Step 12: Attach the dome cover by tightening 3 loosened screws on Step 3 and make sure that the groove on the dome cover is aligned to the one on the camera;



Step 13: Put the magnetic ring cover on to complete the installation.



Recessed Installation of Mini PTZ Dome Network Camera

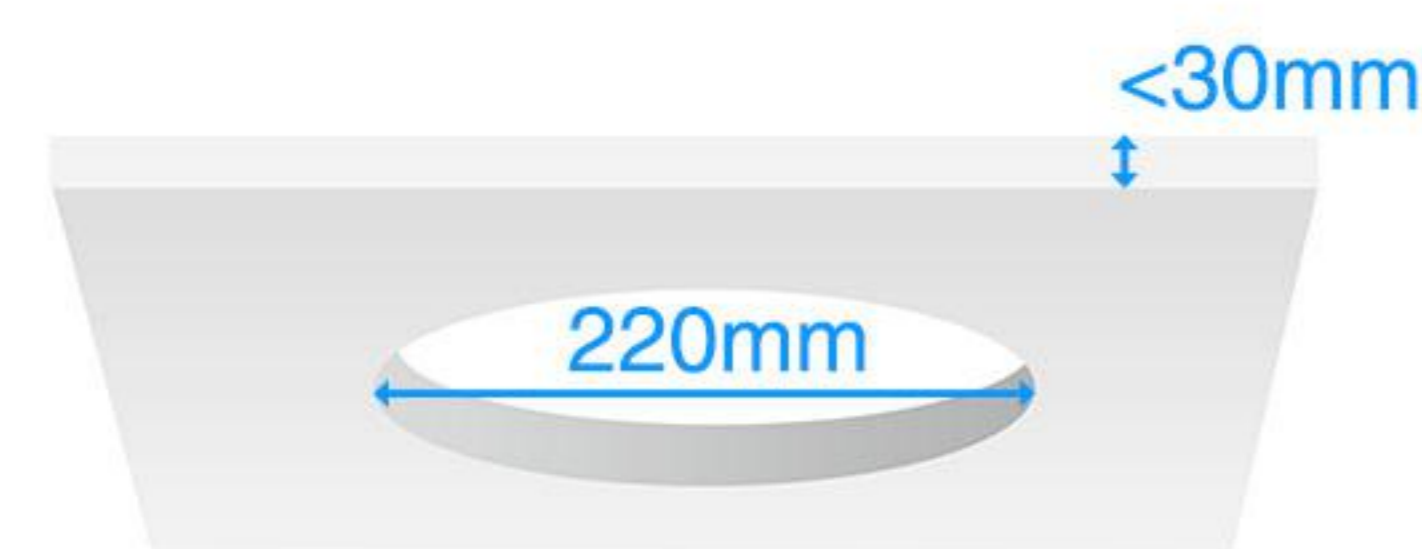
Camera Overview:



A78 Recessed Mount Contents:



Step 1: Ensure that the intended installed ceiling is suitable. The thickness of the ceiling should be less than 30mm. Then drill a round hole whose diameter is 220mm on it;



Step 2: Assemble the mounting adaptor. Stand the 3 legs on Part A of mounting adaptor up and then put the Part B on it and tighten the 3 screws;



Step 3: Hold the camera and turn the black cover anticlockwise to take it off;



Step 4: Pull the cables through the mounting adaptor and insert the camera into it;



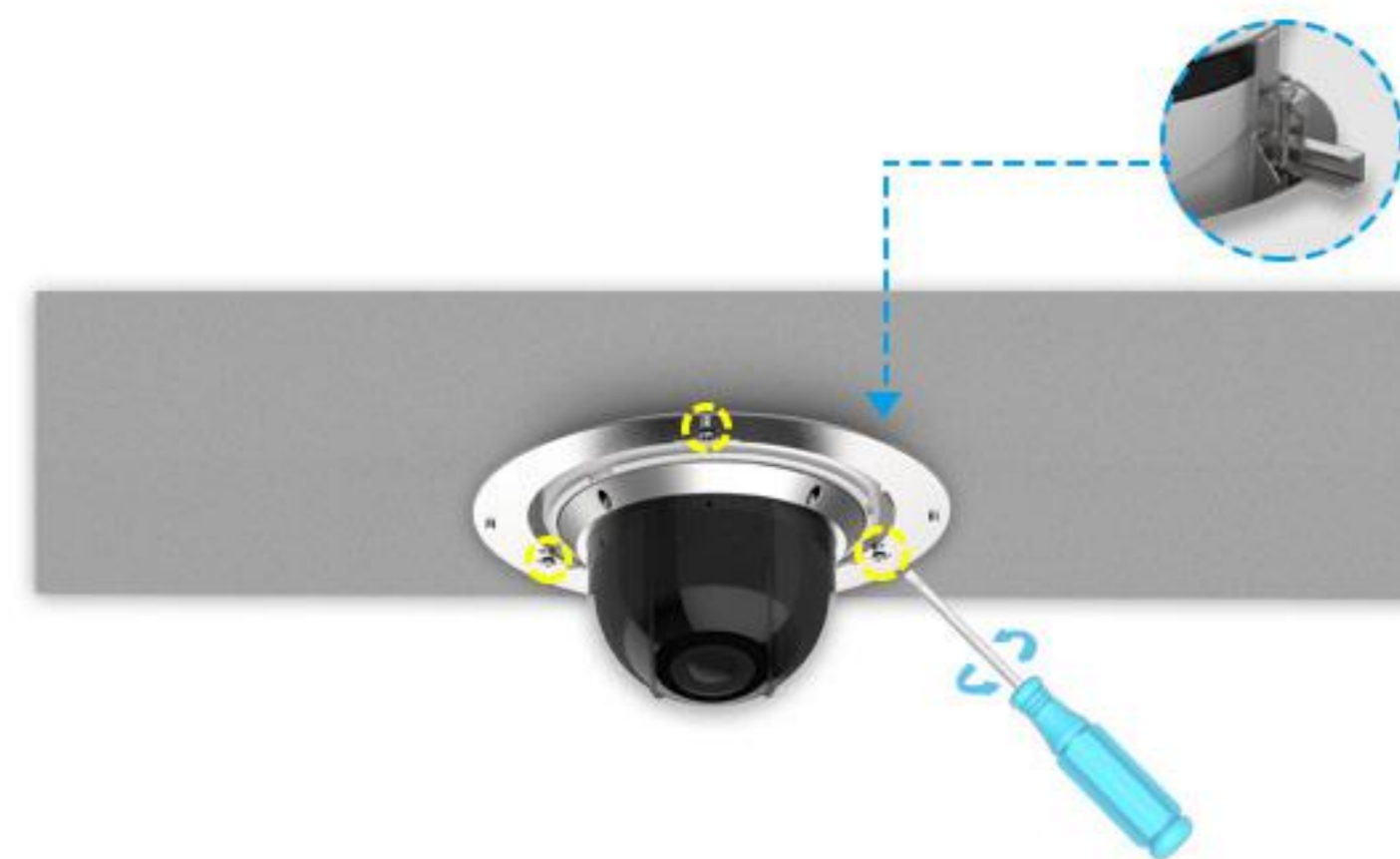
Step 5: Lock the mounting bracket on the camera to the mounting adaptor by tightening the 4 screws;



Step 6: 2.Connect the cables and insert the camera with mounting adaptor into the drilled hole;



Step 7: Tighten the 3 screws on the mounting adaptor to fasten the camera to the ceiling. The support brackets will move to the designated position when tightening screws;



Step 8: Put the magnetic ring cover on to complete the installation.



Conclusion

With the Recessed Installation, cameras can be inconspicuously mounted into the ceiling, performing their duty secretly and dedicatedly. It brings a lot of advantages you can benefit from like discreetness, neatness, user-friendliness, etc. Taking various application scenarios and different requirements of customers into consideration, Milesight offers a full range of related accessories covering most of dome camera models to meet your needs.

Milesight Technology

Established in 2011, Milesight Technology is a high-tech company, specializing in design, developing and manufacture of best-in-class AIoT video surveillance solutions including Network Cameras, NVRs, Software and APP with superior image quality, exceptional flexibility and reliability for the global market. Milesight Technology markets its products through a worldwide network of distributors and resellers, offering excellent pre/after-sales and technical support services that exceed customers' expectation.

For more information about Milesight Technology, please visit our website www.milesight.com.

Milesight Technology | www.milesight.com

Contact Us: sales@milesight.com support@milesight.com



Add: 220 NE 51st Street, Oakland Park,
Florida 33334, USA
Tel: +1-800-561-0485

Add: 925, Anyang SK V1 Center, LS -ro
116beon-gil, Dongan-gu, Anyang-si, Korea
Tel: +82-31-990-7732

Add: Building C09, Software Park Phase III,
Xiamen 361024, Fujian, China
Tel: +86-592-5922772