

Milesight Prison Security Cameras Enabling Reliable Security in São Paulo Prisons

São Paulo, Brazil

Location: São Paulo, Brazil | Industry Segment: Government | Related Products: Milesight AI Motorized Pro Dome Camera

Background

Prisons represent one of the most demanding security environments, where every detail must be captured, monitored, and trusted.

In São Paulo, legacy surveillance systems were no longer capable of meeting these high-pressure requirements, lacking both clarity and intelligence.

To achieve 24/7 monitoring across all critical areas and enable real-time detection of abnormal activities, authorities deployed 821 Milesight AI Motorized Pro Dome Cameras across two prison facilities, building a more reliable and intelligent security system.



Challenge

Complex Environment with High-Density Monitoring Demands

Prison environments involve multiple monitoring zones, including corridors, common areas, cells, and entry points, combined with high-density inmate populations. This requires 24/7 continuous surveillance with high-detail imaging, where facial features and critical behaviors must be clearly captured at all times.

Extremely High-Risk Scenarios Requiring More Than Just Recording

Frequent risks such as violent conflicts, unauthorized activities, and potential escape attempts demand more than passive video recording. Operators require a proactive security system that combines intelligent detection and visual deterrence to help prevent incidents before they escalate.

Strict Requirements for Continuous Operation and Evidence Reliability

In prison security, surveillance systems must operate non-stop without failure, ensuring that every event is fully recorded and traceable. Any interruption, data loss, or unclear footage could compromise incident investigation and accountability.

Large-Scale Deployment with Centralized Management Needs

Managing hundreds of cameras across multiple facilities requires a system that supports centralized control, efficient operation, and seamless integration with existing platforms. Without this, system complexity increases, and operational efficiency decreases significantly.

Solution

To address the stringent requirements of prison security, Milesight delivered a unified surveillance system built on **Vision, Intelligence, and Reliability (V.I.R.)**, empowered by Milesight open ecosystem, ensuring continuous monitoring, proactive security, and evidence-driven operations.

Vision Evidence-Grade Imaging with Flexible Coverage

Powered by 4K ultra-high resolution, advanced low-light performance, and Smart IR II technology, the system delivers clear and detailed images across all monitoring scenarios. With motorized zoom lens, operators can remotely adjust focal length and viewing angles, ensuring optimal coverage for different zones such as corridors, entrances, and common areas. Even in crowded environments or low-light conditions, facial features and critical details remain clearly visible.

This enables evidence-grade video, ensuring every incident can be accurately reviewed and verified.

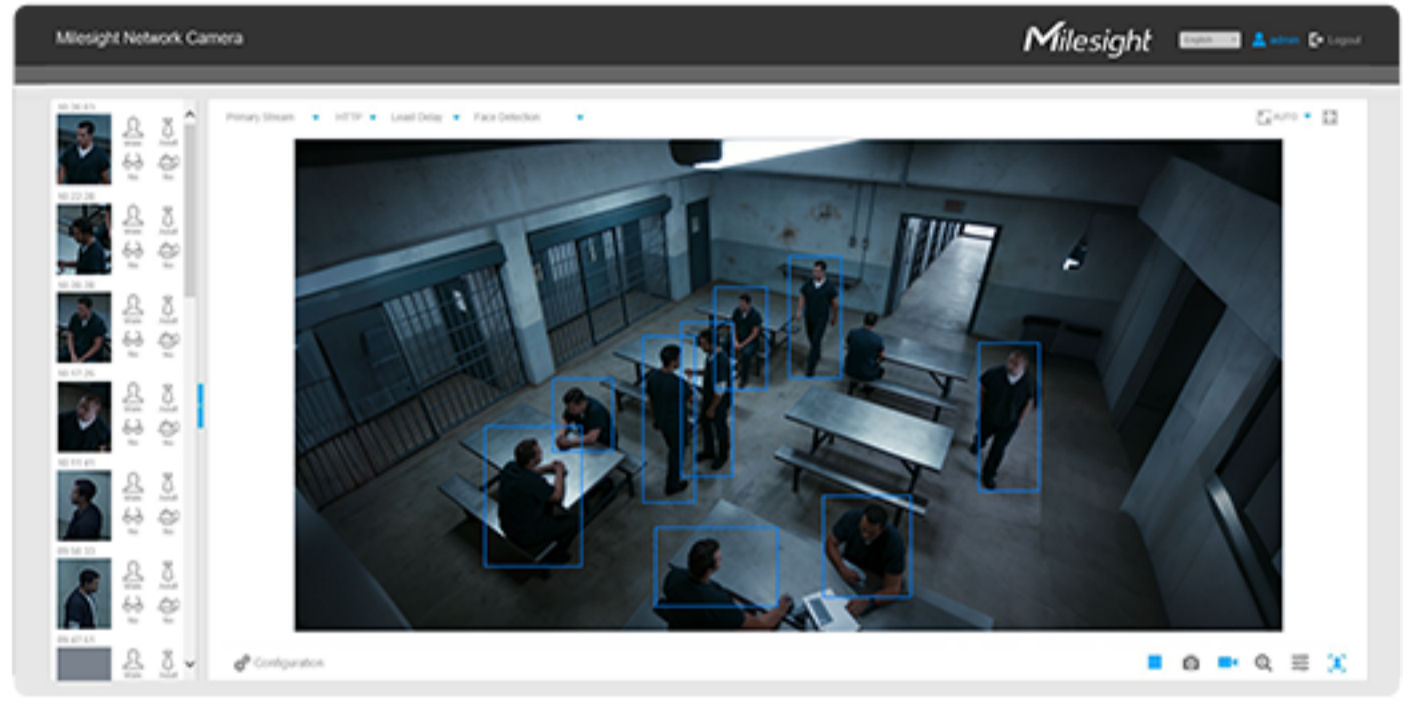
Intelligence Accurate Multi-Target Detection with Edge AI Analytics

With built-in AI face detection, the system is capable of detecting and capturing multiple faces simultaneously (> 6 targets per scene), even in high-density environments.

Combined with Milesight VCA 2.0, it enables real-time identification of abnormal activities and suspicious behaviors.

This significantly improves monitoring efficiency, allowing operators to focus on verified events instead of continuous manual observation.

As a result, the system enhances both accuracy and response speed, reducing missed incidents in complex prison scenarios.



Reliability Always-On Operation with Industrial-Grade Design

Built with industrial-grade design, including IK10 vandal resistance and IP67 weatherproof protection, the cameras are engineered to withstand harsh environments and intentional damage. Combined with NDAA compliance and hardware-level cybersecurity protection, the system ensures secure and stable operation against both physical and network threats.

With long-term reliability supported by robust design, the solution delivers dependable, always-on security for high-risk prison environments.

Open Seamless Integration for Scalable System Management

Built on Milesight's open ecosystem strategy, the solution is designed to operate natively within existing security ecosystems. Supporting ONVIF G/M/S/T protocols, the solution integrates smoothly with existing VMS platforms and management systems. This enables centralized control of large-scale deployments across multiple facilities, simplifying operations and improving efficiency.

As a result, the system provides a scalable and future-ready security architecture that adapts to evolving needs.

Results

Stronger Security and Operational Control

Full coverage and real-time monitoring significantly improve visibility across critical areas, helping operators maintain better control and reduce security risks.

Faster Response with Intelligent Detection

AI-powered analytics enable quicker identification of abnormal activities, improving response speed while reducing reliance on manual monitoring.

Reliable Evidence for Accountability

Evidence-grade video ensures every incident is clearly recorded and traceable, supporting fast and accurate investigation and decision-making.

Stable and Scalable System for Long-Term Use

With industrial-grade reliability and seamless integration, the system delivers continuous operation and supports future expansion across facilities.

Related Products



AI Motorized Pro Dome Camera

- # 2/4/5/6/8MP
- # VCA 2.0 for Ultra-low False Alarm Rate
- # Structured Metadata & Vertical AI Applications
- # 90fps
- # 140dB Super WDR
- # 0.0009Lux Starlight
- # Smart IR II with 90m IR Distance
- # IP67 & IK10