

Milesight

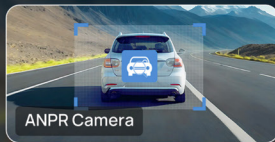
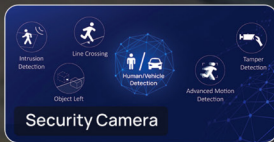


UPCOMING RELEASES 2024

Wireless Deployment | Stitched Panorama | Multi-Sensor | ANPR Game Changer | Radar Detection

4G Solar-powered Camera Series

Wireless · Green · Secure



Key Features ▶▶



All-in-one & Wireless Solution



10 Days Battery Life Guaranteed



Flexible Deployment, Pole Mount & Wall Mount Supported



Seamless Video-streaming with Low Power Consumption

Product Highlights ▶▶



4G Solar-powered ANPR Camera

- Specialized 16mm / 24mm Lens
- Comprehensive License Plate & Vehicle Type Recognition
- Efficient List Management & List Event
- No-plate Event



4G Solar-powered Security Camera

- Specialized 2.8mm / 6mm Lens
- Human&Vehicle VCA: Intrusion Detection / Line Crossing / Object Left / Advanced Motion Detection / Tamper Detection

Application Scenarios ▶▶



Perimeter Protection



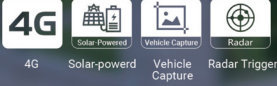
Illegal Dumping Detection



Traffic Surveillance

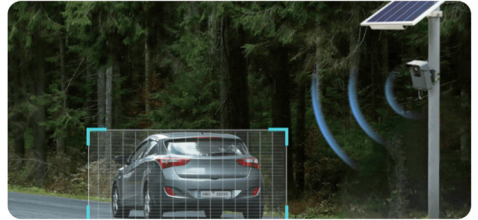
4G Solar-powered Traffic Sensing Camera

Your Real-time Evidence Capture Partner



Accurate Evidence Capture by Radar & AI

Every passing vehicle is captured by highly accurate radar, delivering instant notifications & insights for community and police. Even in low light, the radar's precise detecting capacity plus AI algorithm eliminate capture missing.



Solar-powered & Low Consumption Guarantee a Sustainable Use

Low-consumption technologies guarantee continuous use even on overcast days, while the quick start mechanism permits a timely response when a vehicle approaches.

Easy Deployment to Go Anywhere

Milesight uses 4G LTE & Solar-powered to enable our camera easy to deploy in any area even in remote and isolated locations. Plus easy configuration in mobile via WIFI achieves rapid preparation, making it suitable to place at anywhere lacking LPR cameras.



Tackle Illegal Dumping, Improve Environment Protection



Find Suspicious Vehicles, Reduce Crime Rate



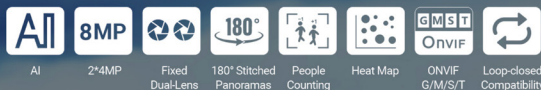
Specific Lane Capture



Illegal Parking Capture

AI Dual-sensor 180° Panoramic Camera

Stunning 8MP Image Quality



180°

Complete Coverage with 180° Dual-Lens Stitching

- 180° Panoramic View without Image Distortion
- Image Stitching for Seamless Panoramic View



Superior Image Quality

- Sharper Low-Light Images: Large Sensor & AI ISP Integration
- 30m IR Illumination
- 140dB Super WDR

AI

Intelligent AI Analytics

- 8+ Standard VCA Events & Intrusion Detection
- Object Counting & Regional People Counting
- Heat Map



Extensive Compatibility

- Closed-loop Support with Milesight Back-end Integration
- Seamless ONVIF G/M/S/T Integration with 3rd-Party Systems

180° Panoramic Cameras - Multiple Options, For Your Choice

AI 180° Panoramic Mini Bullet / Dome Camera	AI Dual-sensor 180° Panoramic Camera
✓ 180° Panoramic View with One Lens	✓ Seamless 180° Stitched Panoramic View with Two Lenses
✓ Cost-effective & Economical	✓ Higher Image Quality with Great Detail and Minimal Distortion
✓ 4K Ultra High Definition	✓ 8MP High Definition
✓ Revolutionary IR Performance Up to 15m	✓ Revolutionary IR Performance Up to 30m
✓ People Counting & Advanced Heat Map	
✓ Intelligent AI Analytics	
<ul style="list-style-type: none"> ▶ VCA Event: Intrusion Detection, Region Entrance, Region Exit, Advanced Motion Detection, Tamper Detection, Line Crossing, Loitering, Object Left/Removed ▶ Object Counting & People Counting & Statistics Report ▶ Heat Map 	

COMING SOON

AI Multi-sensor Multi-directional Camera

Capture Directional Visions in One Camera

- Four-sensors
- 2TB Storage
- AI
- Motorized Lens
- ONVIF G/M/S/T
- Loop-closed Compatibility



Lowering Costs, Expanding Coverage

- 1 Back-end License for All 4 Angles
- Reduced Installation Costs and Simplified Maintenance



4 Channels of AI Features

- Comprehensive AI Surveillance in Each View
- 8*Standard VCA Events & Intrusion Detection



High Quality Extensive Area Coverage

- 4x5MP Independent Sensors, Adjustable Views
- Built-in IR Illumination, Effective up to 30 Meters



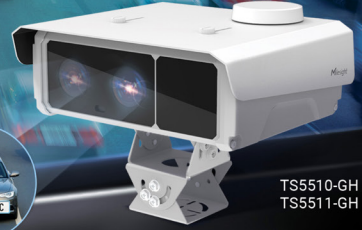
Seamless Integration

- Closed-loop Support for Milesight Back-end Integration
- Seamless ONVIF G/M/S/T Integration with 3rd-Party Systems

TrafficX Camera Series

ANPR Game-Changer -
For More Demanding Traffic Applications

99% Capture Rate



TS5510-GH
TS5511-GH

Capture Traffic Data Like Never Before

99%

Capture Rate

98%

Plate Recognition Rate

250 km/h

High Recognizable Speed

Product Highlights



Various Vehicle Attributes Recognition



AI-based Onboard ANPR



Red Light Violation Detection



High Speed Capture
with Global Shutter

ANPR

Dual-lens for Overview
and ANPR Image



Embedded AI ISP for
Enhanced Visual Clarity



Support CGI/APIs and
TCP/HTTP/MQTT Protocols
for Easy Integration

Various Applications



Urban Road



Freeway



Free-flow Tolling



Traffic Monitoring



Law Enforcement



Low Emission Zone

Milesight | www.milesight.com

Tel: +86-592-5922772(8801) - Sales +86-592-5922772(8701) - Support

Mail: sales@milesight.com support@milesight.com

Address: Building C09, Software Park Phase III, Xiamen 361024, Fujian, China

