

Milesight

NEW PRODUCTS

4G Solar-powered
Wireless Perimeter Defense
TrueColor
Radar-Video Fusion
High Speed ANPR



4G Solar-powered Camera Kit

Eco-friendly Security for Off-grid & Remote Area



►► Fast Deployment without Existing Infrastructure



All in 1 Kit

Camera, battery, solar & AI in one kit



Only 2 Watts

Ultra-low power consumption design



17 Days Battery Life

Up to 17 days of continuous recording



3rd Party Compatibility

Works with third-party VMS

►► From Intruders to Plates, All Covered



4G Solar-powered **Security** Camera

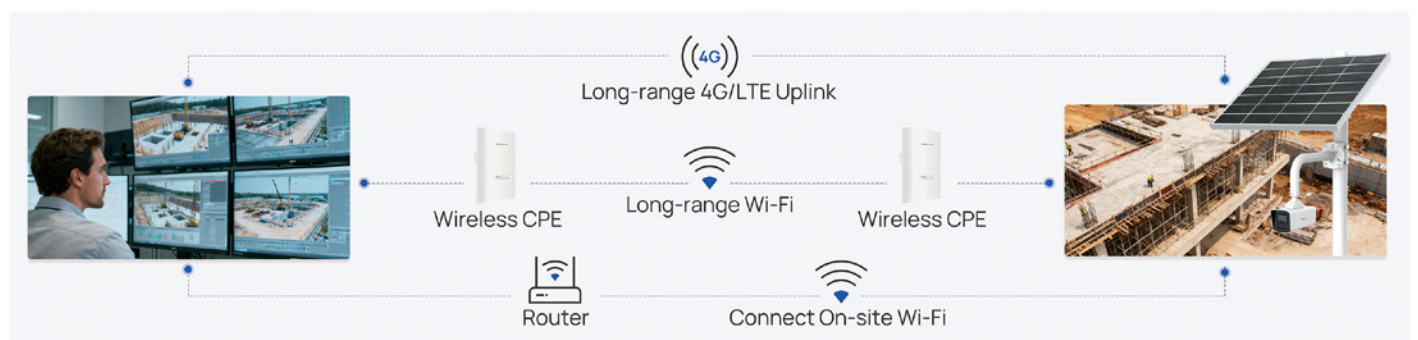
- 2.8mm/6mm Lens
- Perimeter Protection & Proactive Defense
- Illegal Dumping Detection
- Vehicle/Human Classification



4G Solar-powered **ANPR** Camera

- 6mm/16mm Lens
- Comprehensive License Plate & Vehicle Type Recognition
- Efficient List Management & List Event
- No-plate Event

►► Seamless Connectivity, Anywhere



4G Solar-powered Perimeter Sensing Camera

Wireless perimeter defense with AI visual verification

AI PIR AOV GDPR IP67



Wireless for Off-grid Perimeter Protection



PIR + AOV + AI Tri-sensing

Ultra-low false alarms with 30m detection distance



4MP Image & Recording

F1.0 large aperture & 1/1.8" CMOS



Low-power Design

Extends battery life for long-term operation



Wireless Deployment

4G/WiFi connectivity + solar powered

How it Works



Audio Out



Audio Deterrence

HTTP(S)/MQTT(S)/SMTP(Email)



Image



Recording

Suspicious Activity Detection

- **Two motion detection modes:** PIR sensing and AOV (Always-On Video)
- **AI visual verification:** Reduces environmental false alarms and focuses on real human events
- **Noise detection:** Monitors ambient sound and triggers alarms when it exceeds the set threshold

Trigger Alert & Action

- **Flexible evidence capture:** Snapshot only, short clip only, or snapshot + short clip
- **External speaker support:** Plays alarm tones or pre-recorded voice messages for deterrence
- **Multi-channel notifications:** Sends alerts via HTTP(S)/MQTT(S)/SMTP (Email) for fast integration with monitoring and alarm platforms

Smart Working Modes to Save Power Consumption

Working Mode	PIR	AOV	Scheduled Image	Exception Event	Remote Wake-up
ActiveGuard Mode	✓	✓	✓	✓	✓
EcoSnap Mode	✗	✗	✓	✓	✓
Standby Mode	✗	✗	✗	✓	✓

Milesight Q Series

See in TrueColor, Stay On-Guard



Fixed & Motorized Lens

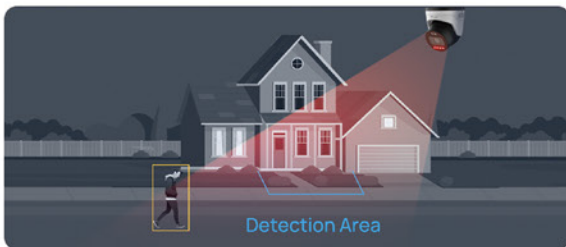


▶▶ Key Highlights of Milesight Q Series

TrueColor Image	Built-in Deterrence	Smarter AI	Easy Deployment
<ul style="list-style-type: none"> • 4/5/8MP • Smart Hybrid Light • F1.0 Large Aperture & 1/1.8" Big Sensor • AI ISP • Super Day-Night Focus Lens • Precision AA Process 	<ul style="list-style-type: none"> • AI-triggered Audio-Visual Alarms • Red & Blue Flashing Lights • Built-in Speaker & Dual Mic • Real-time Alarms to Deter Intrusions 	<ul style="list-style-type: none"> • VCA 2.0 with Ultra-low False Alarm Rate • Up to 75m AI Detection Distance • MSense: Face Capture & Object Counting & Heat Map 	<ul style="list-style-type: none"> • One-screwdriver Installation • ONVIF & Third-party Platform Ready • Sustainable Eco-friendly Packaging • IP67 & IK10

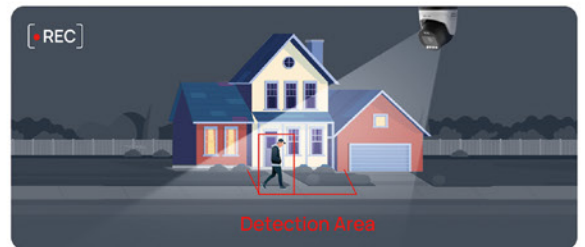
▶▶ How It Works?

Smart Hybrid Light



01 / IR Mode Activated

Infrared lights turn on in a quiet environment, delivering clear images for round-the-clock monitoring.
*Up to 60m IR Distance



02 / Event Detected - Switch to Full-Color

Camera automatically switches full-color lighting upon detecting an event, revealing more details with vivid clarity.



03 / Active Deterrence Triggered

Built-in strobe lights and speaker activate instantly to warn the intruder.
*Red & blue lights support default-off.



04 / Return to IR Mode

Once the event has passed, the system switches back to IR mode, ensuring efficient and non-intrusive surveillance.

Parking Management Camera (PMC) Series

1 Camera, 3 AI Parking Detection Modes



Parking Violation Detection



Occupancy Detection



Parking Detection with LPR

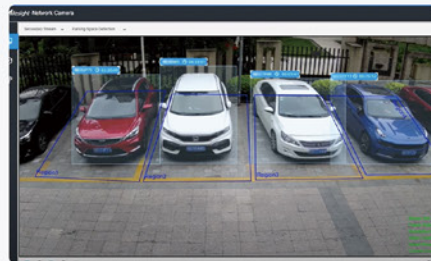
PMC8266-FGPE

Product Model
PMC8266-FPE



Parking Detection with LPR

Up to 6 Parking Spaces for Parking Detection with LPR



Parking Management



Enable Detects
Country / Regi
Detection S
Occupanc
Departure

Add Parking Space Clear

Occupancy Detection

Up to 100 Parking Spaces



Parking Violation Management

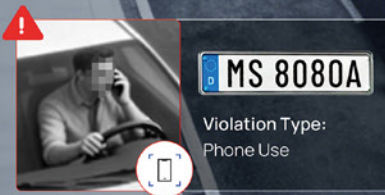
Identify and Record Illegal Parking Behaviors



- 5G Models Available
- Real-Time Information Display on Live Interface
- >98% Accurate AI LPR
- Customizable Configuration for Occupancy Management
- IP67 & IK10
- Precise Parking Time Calculation and Duration Alert
- Clamshell Junction Box
- 4K & 1/1.8" Sensor & 120dB Super WDR

Phone Use Detection & Seatbelt Unfastened Detection

PreciselySpot Driving Risks for Safer Roads




High-Precision Driver Behavior Detection

Trained on extensive real-world road scenarios, significantly reducing missed detections and false alarms

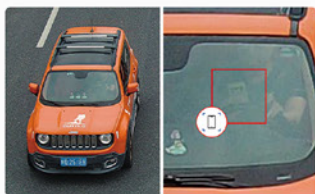
In-Vehicle Face Mosaic to Protect Privacy

Automatically applies face mosaic to detected in-vehicle faces in event snapshots

Phone Use Detection



With IR Flash Light




Without IR Flash Light




- Phone Use Detection is supported for the driver
- Seatbelt Unfastened Detection is supported for both driver and front passenger

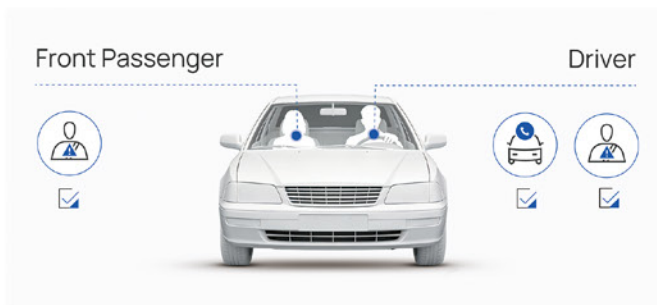
Seatbelt Unfastened Detection




With IR Flash Light



Without IR Flash Light



Milesight TrafficX Cameras + Dedicated IR Flash Light:



Flash Light

- Power supply: AC 220V ±20%
- Infrared wavelength: ≥700nm
- Flash type: Default IR Light



DualVision
TrafficX Camera



SingleVision
TrafficX Camera

DualVision Traffic Radar Camera

Advanced Radar-Video Fusion With Up to 320km/h Speed Detection



- 320km/h Speed Detection & ANPR
- 24GHz Radar
- 99% Capture Rate
- 98% ANPR Accuracy



Speed: 226km/h
Vehicle Type: Car
Vehicle Color: White
Plate: MS1234C
Plate Color: White
MS 1234C

TS5510-GVH

Cutting-edge Radar Performance

Radar-Video Fusion + ANPR

Up to 320km/h Speed Detection

2~3 Lanes Coverage (Recognition \geq 95% individually)

Up to 32 Tracking Targets

Ultra-clear Imaging

Frame Parity Flashing		Global Shutter		740nm/850nm Wavelength	
Even Frame (short exposure)	Odd Frame (long exposure)	Rolling Shutter	Global Shutter	850nm IR Wavelength	740nm IR Wavelength

High Compatibility
• CGI/APIs and TCP/HTTP/MQTT for Easy Integration

Easy Network Connection
• Built-in 4G Module (Optional)

Edge AI ANPR
• Support Recognition of Various Plate Attributes (number and color) & Vehicle Attributes (Type, Color, and Brand)
• Up to 50 Meters ANPR Range

Violation Management
• Reverse Driving Detection, No-plate Detection, Vehicle Attributes Event Detection, Overspeed Violation, etc

Black/White List
• Up to 20000 Records inside the Camera

High Protection Level
• IP67 for Weather-resistant Performance

Large Storage
• Support SD Card Local Storage up to 1TB

SingleVision Traffic Camera

Capture Every Vehicle and Plate at Any Speed

5MP Lens

Global Shutter

Up to 250km/h ANPR

2~3 Lanes Coverage

MS 8080A
 Plate Number: MS 8080A
 Plate Color: White
 Vehicle Type: SUV
 Vehicle Color: White

▶▶ Up to 250km/h ANPR & Vehicle Capture

Capture and recognize license plates of high-speed vehicles



▶▶ Vehicle Attributes Event

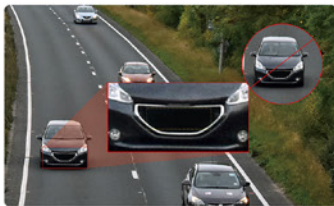
Accurately detect vehicle attribute events and trigger alerts for critical traffic management

Vehicle Type
 Motorized Vehicle: Car, SUV, Van, Bus, Fire Engine, Ambulance, Truck, Motorcycle
 Non-motorized Vehicle: Bicycle, E-bike

Vehicle Brand
 Audi, Toyota, Buick, Aston Martin, Jeep, BMW, Mercedes-Benz, Honda, Tesla, Volkswagen, Ford, Lexus, Maserati

Plate Color
 Black, Yellow, Green, White, Blue, Red

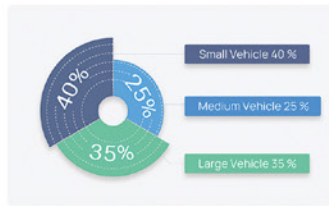
Vehicle Color
 Red, Yellow, Green, Blue, Purple



No Plate Detection



Reverse Driving Detection



Traffic Flow Statistics



Evidence Camera Linkage

5MP Motorized Lens

- 60fps
- P-iris
- Lens Defogging
 (*Built-in fan and heater for faster lens defogging)

Stainless Steel Bracket

- Enhanced Corrosion Resistance
- Higher Structural Strength
- IP67 & IK10



Dual Antenna Design

- Stronger 4G Signal
- Built-in GPS

Upgraded IR for Better Visibility

- 740nm/850nm: 15 Light Beads

▶▶ Upcoming Functions (Next Firmware Version)

Coming Soon



Phone Use Detection



Seatbelt Unfastened Detection



Restricted Lane Violation Detection



Illegal Lane Change Detection