

■ Make Sensing Matter ■

V10.1



Milesight | www.milesight.com

Tel: +86-592-5922772(8801) - Sales +86-592-5922772(8701) - Support

Mail: sales@milesight.com support@milesight.com

Address: Building C09, Software Park Phase III, Xiamen 361024, Fujian, China



www.milesight.com



Milesight

CONTENTS

About Us	01	Intelligent Traffic Cameras	25
Why Milesight	02	TrafficX Series	25
Unique Aesthetic Product Design	02	Road Traffic Management	27
Quality & Reliability	03	Parking Management	29
Certification & Ecosystem Management	04	NVR	31
Superior Image Quality	05	NVR Series	31
Intelligent AI Algorithms	07	PoE NVR Series	32
User-Centric Design	09	Enterprise NVR Series	33
AI Network Camera	11	PoE Switch	34
4G Solar-powered Series	11	Software	35
AI Mini Series	15	Accessories	36
AI Pro Series	17		
AI PTZ Series	19		
AI Panoramic Series	21		
AI 5G Series	23		



About Us

Milesight offers multi-potential sensing products to capture the most meaningful data and makes it accessible across diverse applications. It innovatively applies emerging technologies such as AI, 5G, and IoT to distinct use scenarios. With a commitment to making sensing matter, Milesight quickly responds to customer-specific challenges and collaborates with an expanding network of partners to deliver unique data value. It is determined to make real, positive impacts in smart buildings, intelligent traffic, intelligent security, smart cities, and beyond.



600+
Employees



2000+
Distributors and
System Integrator
Partners



120+
Serves to
120+ Countries
and Regions



65M+
Annual
Turnover of 65+
Million USD



2
Focus on 2 Product
Lineups: Smart IoT
and Video Surveillance

Unique Aesthetic Product Design



Distinctive Exterior Design

The sleek and elegant design distinguishes Milesight Cameras.

Design Language

Milesight cameras' streamlined design form and smooth lines not only enhance its aesthetic appeal but also provide a distinct visual difference that catches the eye.



Award-winning Design

The Highest-Quality Authenticated:
Milesight Indoor Parking Guidance Camera
Wins IF Design Award.



Quality & Reliability



Attention
to Detail



Premium
Texture



Hardware and
Protective Design



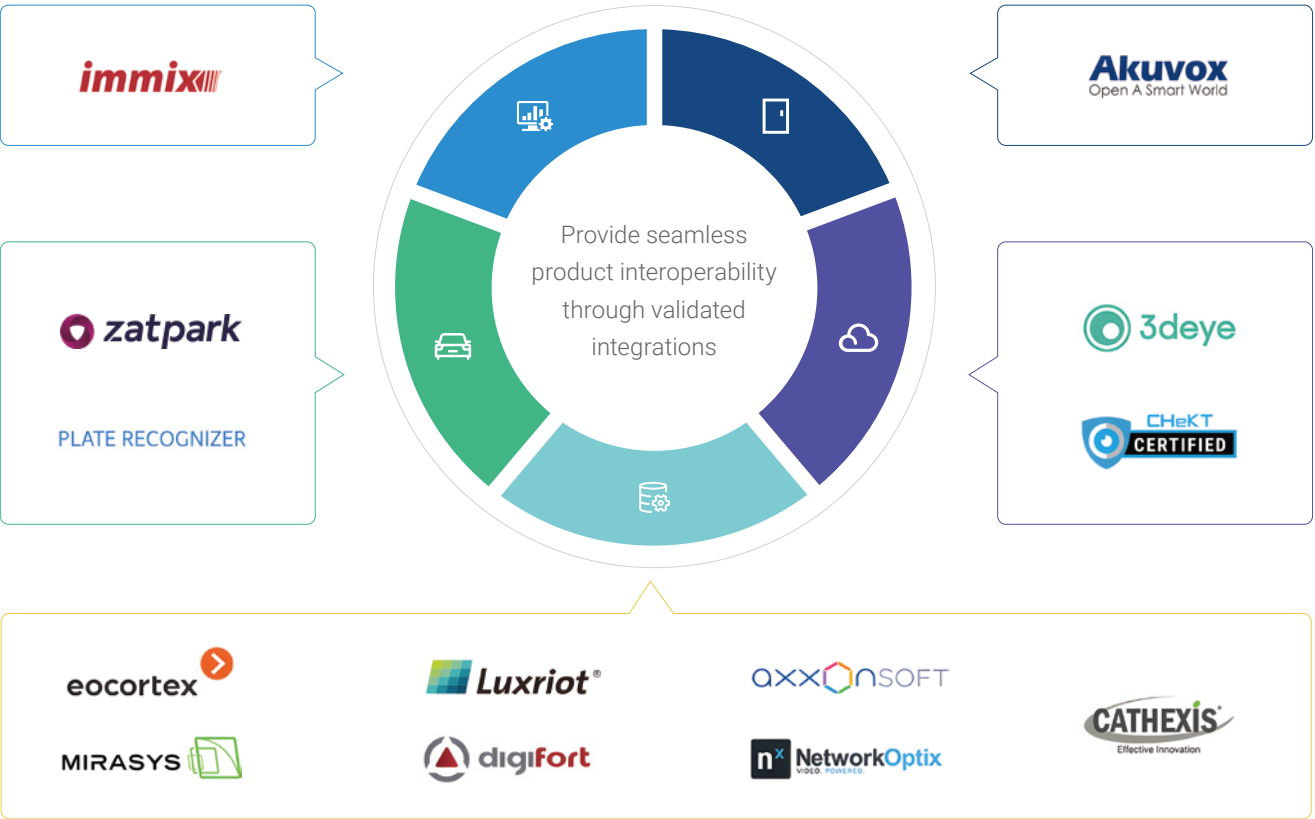
Certification

We are certificated with CE, FCC, UL,Verizon,etc., meeting the daunting and demanding requirements of global security industry.



Ecosystem Management

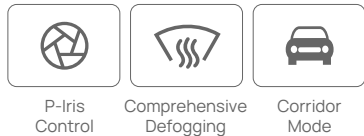
Open Platform & Third-party Algorithm Integration



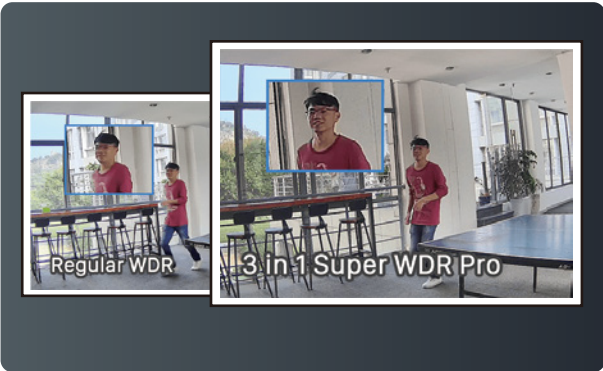
Superior Image Quality

Milesight cameras deliver outstanding performance with advanced features for professional surveillance. They ensure vivid image quality with 140dB WDR, HLC, and BLC, while offering optical zoom from 3X to 42X for detailed capture.

Supporting high frame rates up to 100fps and low-light performance with 0.001Lux sensitivity and Smart IR II Technology, they excel in both day and night environments. With wide-angle viewing (180°/360° panorama) and high resolutions up to 12MP, Milesight cameras provide clear, smooth, and expansive coverage.



Vivid Image in Backlight



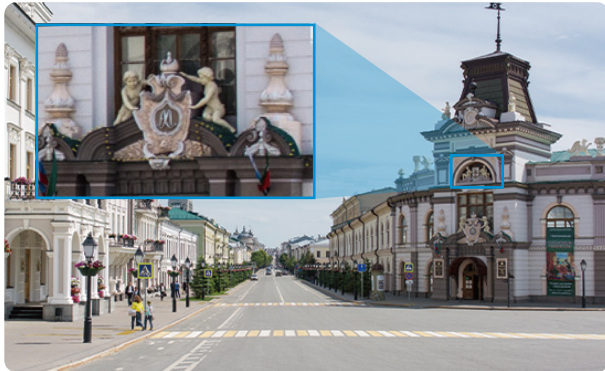
- 140dB WDR
- HLC (Highlight Compensation)
- BLC (Backlight Compensation)

Low Light Performance



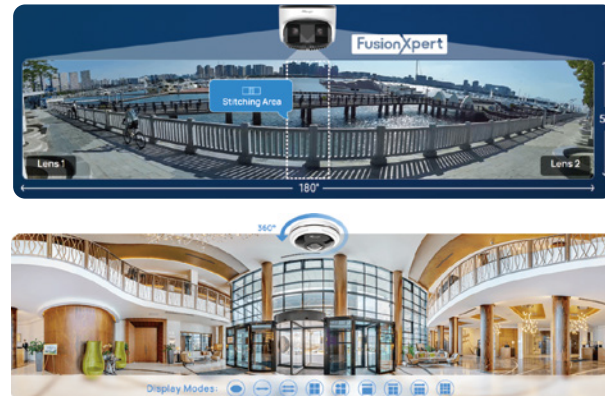
- 0.001Lux Ultra Low-light
- Smart IR II Technology

Optical Zoom



- 3X/5X/12X/20X
- 23X/30X/36X/42X

Wide Angle Viewing



- 180°/360° Panorama
- Multi-directional Coverage

High Frame Rate



- 60fps/90fps/100fps

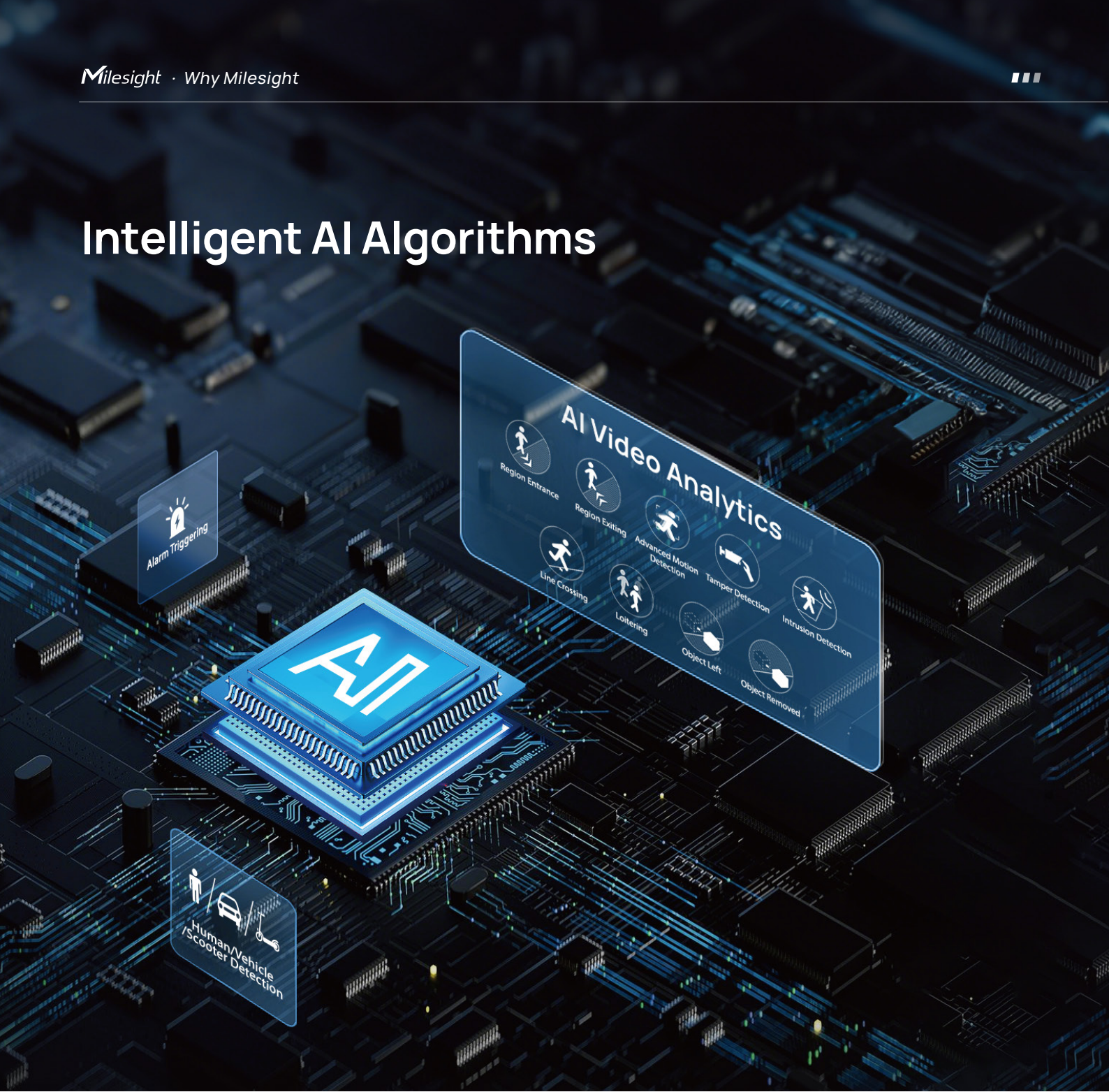
High Resolution



- 2MP/5MP/6MP/4K/12MP



Intelligent AI Algorithms



ANPR

Vehicle Type

Motorized Vehicle:

Car, SUV, Van, Bus, Fire Engine, Ambulance, Truck, Motorbike

Non-motorized Vehicle:

Bicycle, E-Scooter

Vehicle Brand

Audi, Toyota, Buick, Aston Martin, Mercedes-Benz, BMW, Mazda, Tesla, Honda, Volkswagen, Ford, Jeep, Lexus, Maybach

Plate Color

Black, Yellow, Green, White, Blue, Red

Vehicle Color

Red, Yellow, Green, Grey, Brown, Blue, White, Black, Purple

Plate Number

X-123X

ADR License plate

33 1088

VCA

Advanced Motion Detection

Loitering

People Counting

Object Removed

Object Left

Human/Vehicle /scooter Detection

Region Exiting

Region Entrance

Line Crossing

Tamper Detection

Intrusion Detection



100% In-house Developed



Continuously Updated



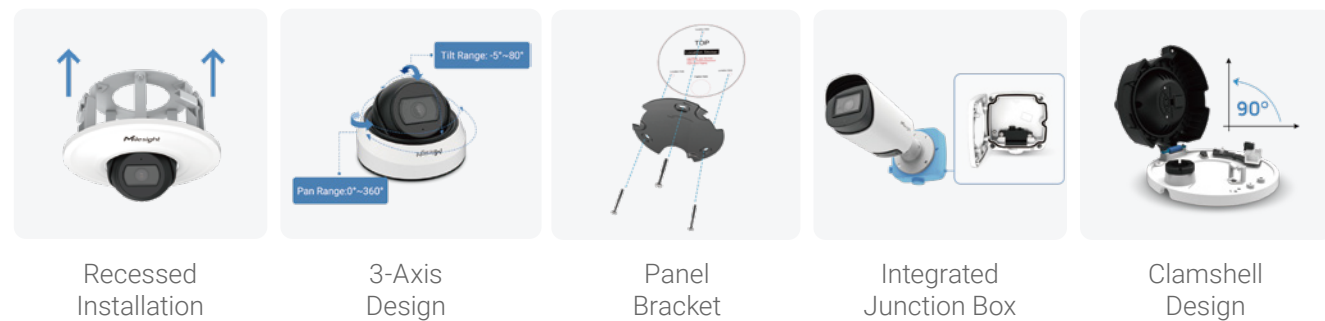
Dedicated AI Algorithm Team

User-Centric Design

Succinct Structure



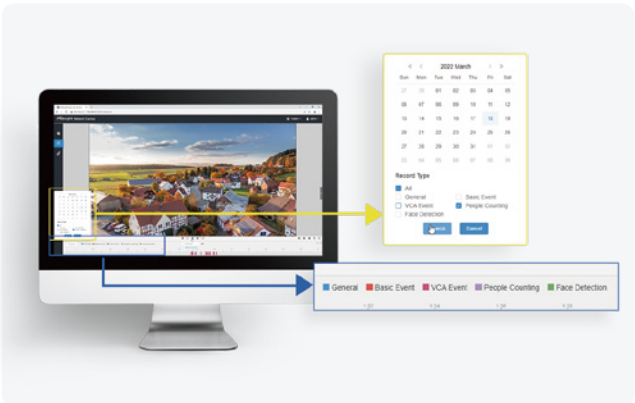
Product Structure Features



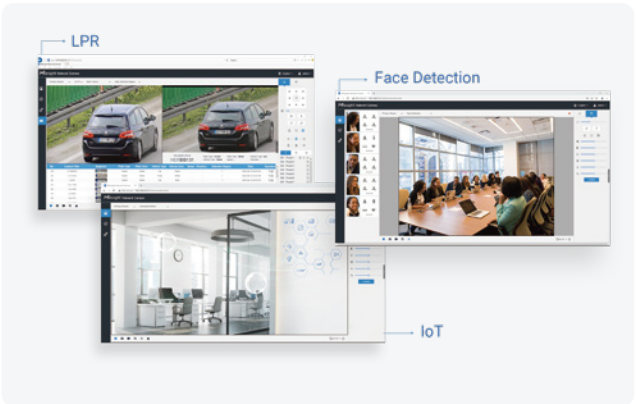
User-friendly UI Design



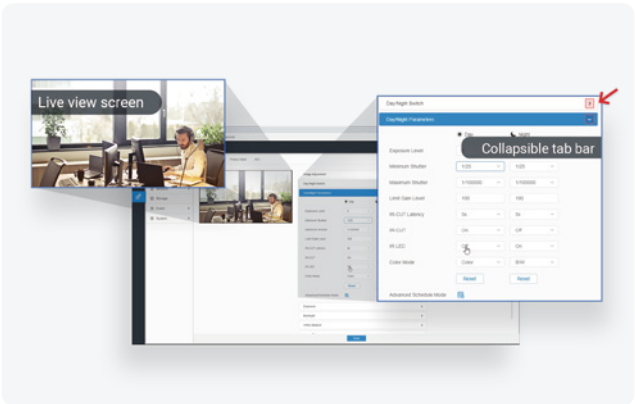
Simple Structure for Smooth Video Surveillance



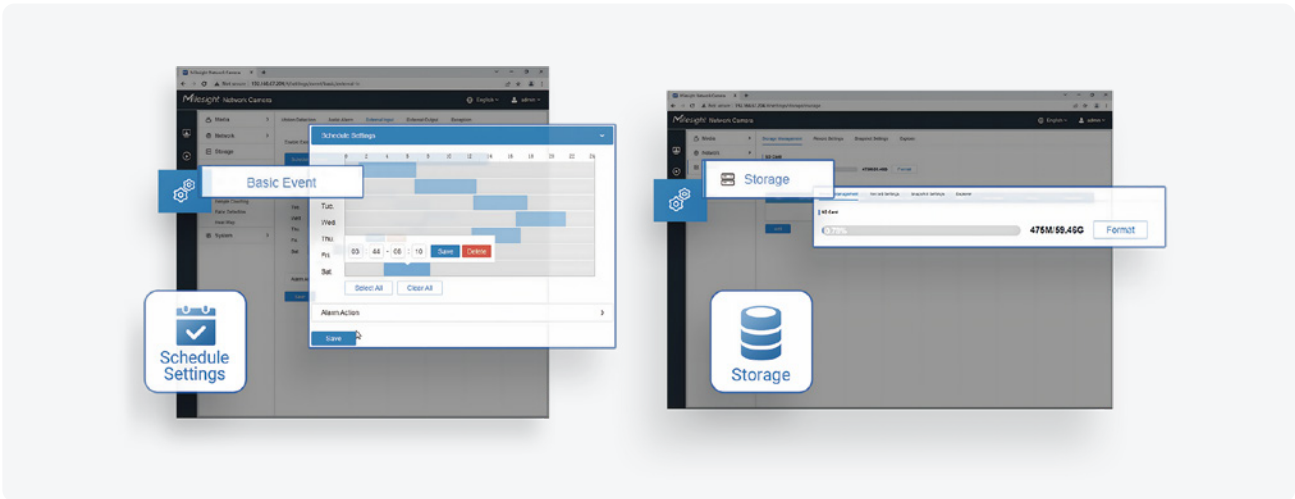
Quick Playback to Focus More on What Matters Most



Professional Mode Interface for Specific Applications



Easy Configuration for Efficient Operations

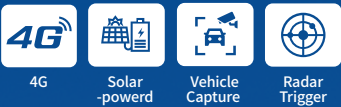


Better Visualized & Interactive Designs

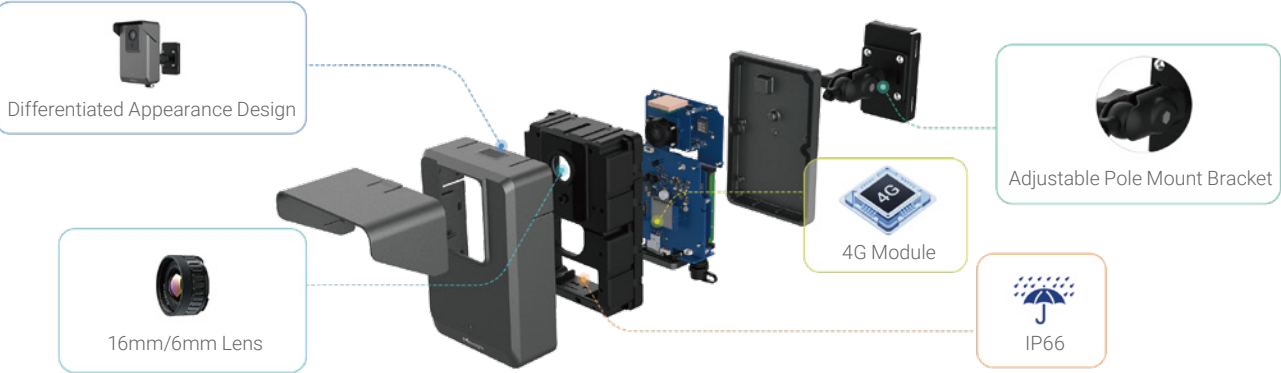


4G Solar-powered Series

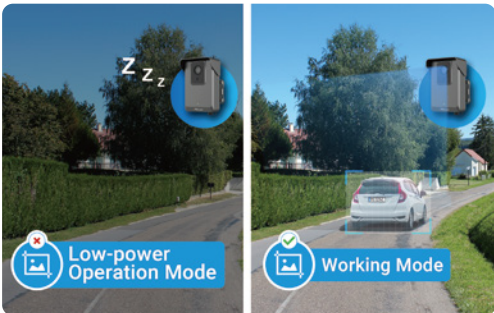
4G Solar-powered Traffic Sensing Camera



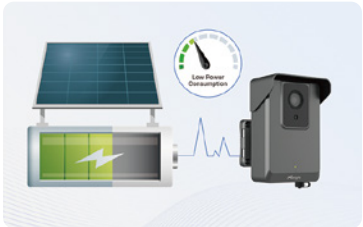
Unique Structure Design



Real-time Vehicle Capture by Radar & AI



Low-power Mode for Energy Efficiency



Solar-powered for Constant Use



4G LTE for Wireless Data Transmission

Key Features

- 4G LTE for Wireless Data Transmission
- Solar-powered for Constant Use
- Battery & Type-C Charging
- Radar Trigger Vehicle Capture
- AI Algorithm for Precise Snapshot
- Low Consumption Technology
- Quick Configuration via WiFi Connectivity
- Built-in High-accuracy GPS Module
- High Compatibility with MQTT & HTTP
- IP66

Application Scenarios



Traffic Flow Collection for Further Insights



Entry & Exit Time Capture for Parking Lots



Illegal Parking Capture

4G Solar-powered Series

4G Solar-powered Camera Kit

AI

4G

Solar-powered

1TB Storage

Modular Battery

GMST Onvif

IP67



4G Solar-powered Security Camera

- Specialized 2.8mm/6mm Lens
- Identification for Human & Vehicle (Bicycle/Car/Motorcycle/Bus/Truck)
- Intrusion Detection / Line Crossing / Object Left / Advanced Motion Detection



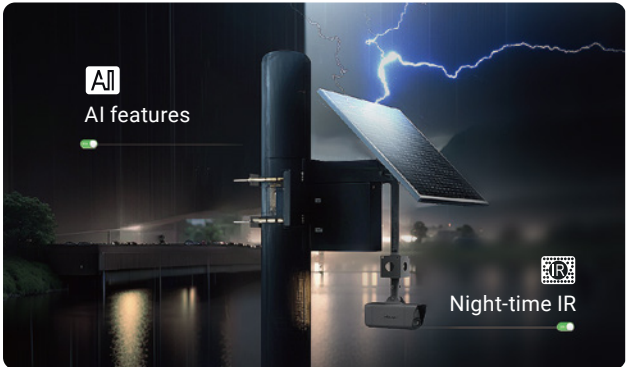
4G Solar-powered ANPR Camera

- Specialized 6mm/16mm Lens
- 850nm/740nm IR Wave Length
- Identification for Vehicle Type (Bicycle/Car/Motorcycle/Bus/Truck)
- License Plate Recognition
- List Management/List Event
- No-plate Event

Key Features



4G + Solar-powered for Remote Surveillance



9 Days of Battery Life, Unmatched 24/7



Go Green with Ultra-low Power Consumption

Working Mode	Recording	AI Detection	Data Transmission
Performance	Continuous	On (Full Frame Rate)	On/Off
Eco	Continuous	On (Dynamic Frame Rate)	On/Off
Sleep	Scheduled Image Capture	Off	Off

Flexible Working Mode for Your Choice
*Eco mode is not available for ANPR camera.

- Up to 6*90Wh Battery & 2*90W Solar Panel
- Edge-AI LPR Algorithm
- VERIZON and AT&T Certificated
- Built-in High-Accuracy GPS Module

- 4MP/0.005Lux/120dB Super WDR
- 20m IR Distance
- IP67 & Category 12 Typhoon Guaranteed
- Battery Protection in -20°C to +60°C

Application Scenarios



Construction Sites



Illegal Dumping



Community Safety



Remote Security

AI Mini Series

Small in Size, Big on Intelligence



AI IR Mini Dome Camera
2/4/5/8 MP



AI Vandal-proof Mini Dome Camera
2/4/5/8 MP



AI Motorized Dome Camera
2/4/5/8 MP



AI Weather-proof Mini Dome Camera
2/4/5/8 MP



AI Vandal-proof Mini Bullet Camera
2/4/5/8 MP



AI Color+ Vandal-proof Mini Bullet Camera
2/5/8 MP



AI Motorized Bullet Camera
2/5/8 MP

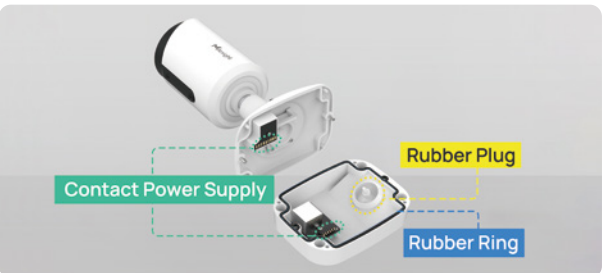
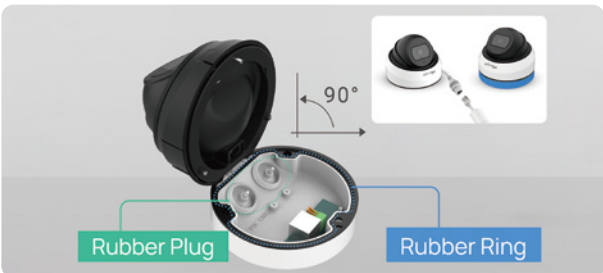
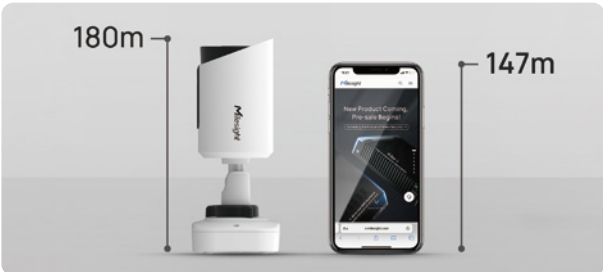


AI Weather-proof Mini Bullet Camera
2/5/8 MP

Key Features

- 2MP@90fps, 4MP@30fps, 5MP@30fps, 4K@30fps
- 4K Sony Starvis Sensor
- Smart IR II with 50m IR Distance
- 140dB Super WDR
- IP67 & IK10
- Fixed Lens & Motorized Zoom Lens
- Multiple Interfaces & Built-in Microphone
- P-Iris
- SIP/VoIP

Unique Structure Design



- Recessed Installation
- Ultra Compact Size
- Clamshell Design
- 3-axis Mechanical
- Point-contact Power Supply
- Better Thermal Design

AI Functions as Standard





AI Pro Series

Precision Perfected, Pro Excellence Embodied



AI 4X/12X Pro Bullet Plus Camera
2/4/5/6/8 MP



AI Motorized Pro Bullet Plus Camera
2/4/5/6/8 MP



AI Motorized Pro Bullet Camera
2/5/6/8 MP

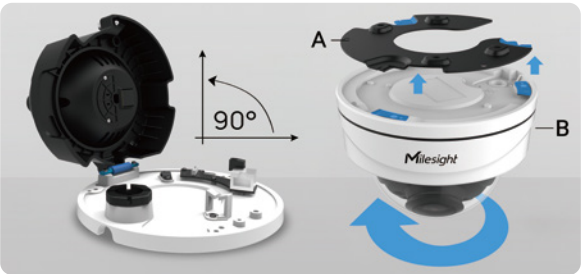
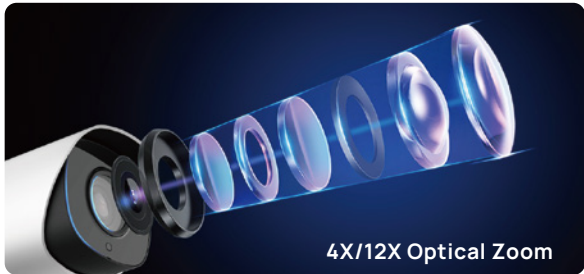
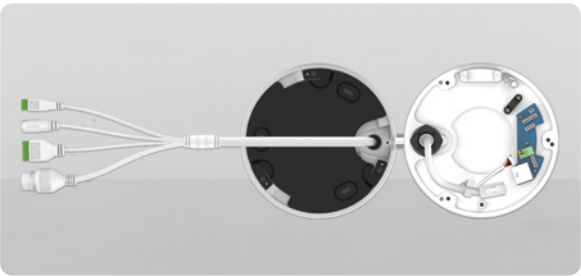


AI Motorized Pro Dome Camera
2/4/5/6/8 MP



AI Pro Box Plus Camera
2/4/5/8 MP

Key Features



- 2MP@90fps, 5MP@30fps, 6MP@30fps, 4K@30fps
- 4X/12X Optical Zoom
- 180m IR Range
- 1/1.8" Sony STARVIS Sensor
- 0.002Lux Ultra Low-light
- 140dB Super WDR
- P-Iris
- IP67 & IK10
- Integrated cable management
- Versatile interfaces
- Efficient & Simple Installation

Intelligent Video Analysis



- 9*Standard VCA Events
- Object Counting
- Regional People Counting
- Face Detection
- E-Scooter Detection (Coming Soon)
- Hard Hat Detection
- Smoke Fire Detection



AI PTZ Series

Intelligent PTZ to Transform Your World



AI 12X PTZ Bullet Camera
2/5/8MP



AI 12X/20X/23X PTZ Bullet Plus Camera
2/4/5/8 MP



AI 12X/20X/23X PTZ Dome Camera
2/4/5 MP



AI 25X/30X/36X/42X Speed Dome
2/4/5/8 MP



Precise PTZ Tasks

- 12X-42X Optical Zoom
- 360° Endless Pan & 90° Tilt
- Pan Speed up to 350°/s
- Tilt Speed up to 360°/s
- Applied TMR technology
- Structural Precision Less than 0.1°
- 300 Presets & 8 Patrol Paths & 4 Patterns



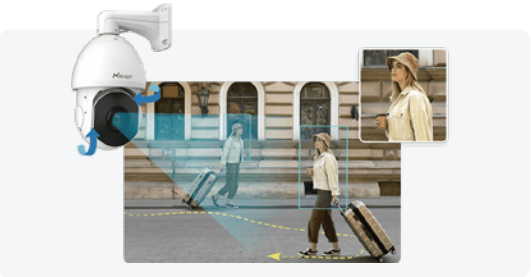
AI Video Analytics

- 9* Standard VCA Events
- Object Counting
- Regional People Counting
- Face Detection
- Hard Hat Detection
- Smoke & Fire Detection



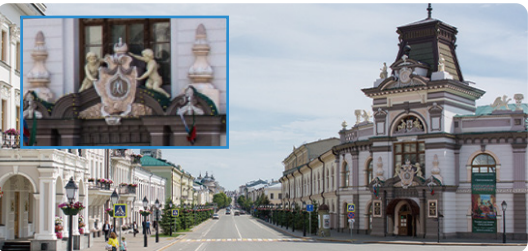
Advanced Functions

- PTZ Auto Tracking
- PTZ Privacy Mask
- Intelligent White LED
- 3D Positioning
- Smart Rain-sensing Wiper



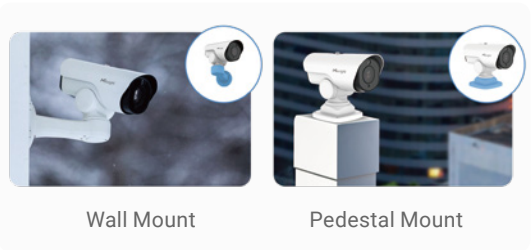
Outstanding Viewing Experience

- 1/1.8" STARVIS Starlight Sensor
- 4K & 100fps
- 0.002Lux Starlight
- 140dB Super WDR
- Smart IR II with 300m IR Distance



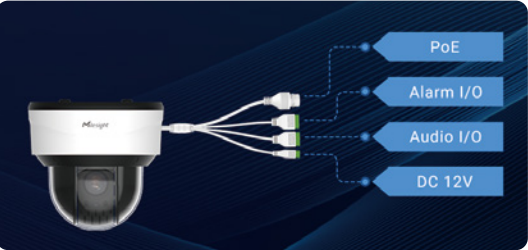
Superior Structure

- Wall Mount / Pedestal Mount
- Recessed Installation



Versatile Interface

- Audio I/O, Alarm I/O, PoE
- AC/DC 12V, RS 485





AI Panoramic Series

Boudless World, Truly Within Reach



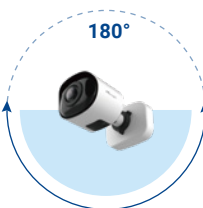
AI Dual-sensor
180° Panoramic
Camera



4x5MP
AI Multi-directional
Camera



AI 360°
Panoramic
Fisheye Camera



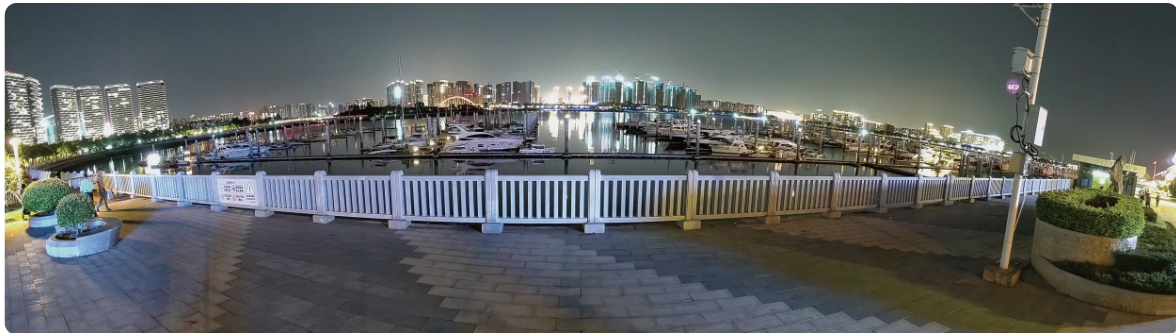
AI 180°
Panoramic Mini
Bullet Camera



AI 180°
Panoramic Mini
Dome Camera

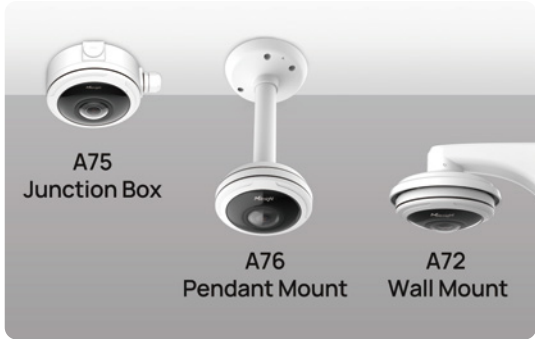
Outstanding Viewing Experience

- 180°/360° Panoramic
- FusionXpert Seamless Stitching
- Up to 12MP
- Superior Image Dewarping
- Onboard/Client-side dewarping
- AI ISP for Outstanding Image Quality
- 1/1.8" STARVIS Starlight Sensor
- 140dB Super WDR



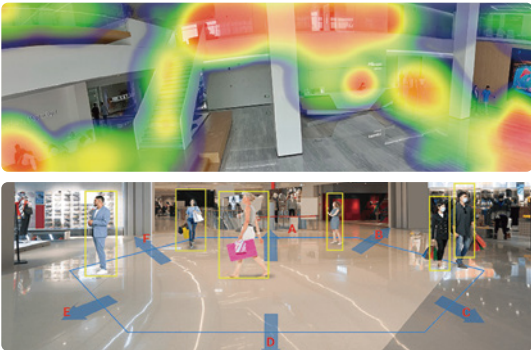
Exquisite Design

- Contact Power Supply Design
- Maximized Installation Flexibility
- Built-in Mic, Alarm I/O, Audio I/O, DC 12V



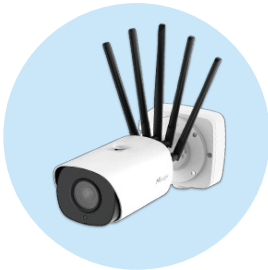
Intelligent Video Analysis

- 9*AI VCA Events
- E-Scooter Detection
- Advanced Heat Map
- People Flow Analysis
- Object Counting



AI 5G Series

Empower the Future of Smart Connectivity



5G AIoT 4X/12X
Pro Bullet Plus Camera
2/8MP



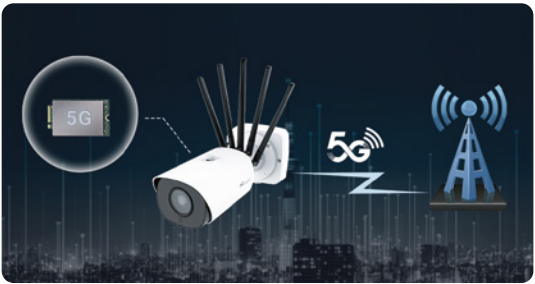
5G AI 4X/12X
Pro Bullet Plus Camera
2/8MP



5G AI Motorized
Pro Bullet Plus Camera
2/5/8MP

Industry-leading 5G Technology

- High Bandwidth
- Low Latency
- High Mobility
- Broad Extensibility



Cutting-edge IoT Technology

- Support Standard LoRaWAN® Protocol
- 8 End-devices Simultaneously
- Built-in Network Server
- Support MQTT/HTTP/HTTPS API

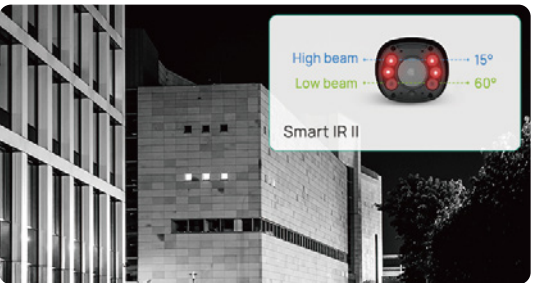


Outstanding Viewing Experience

- 4K Video Viewing Experience
- 1/1.8" Starlight Sensor

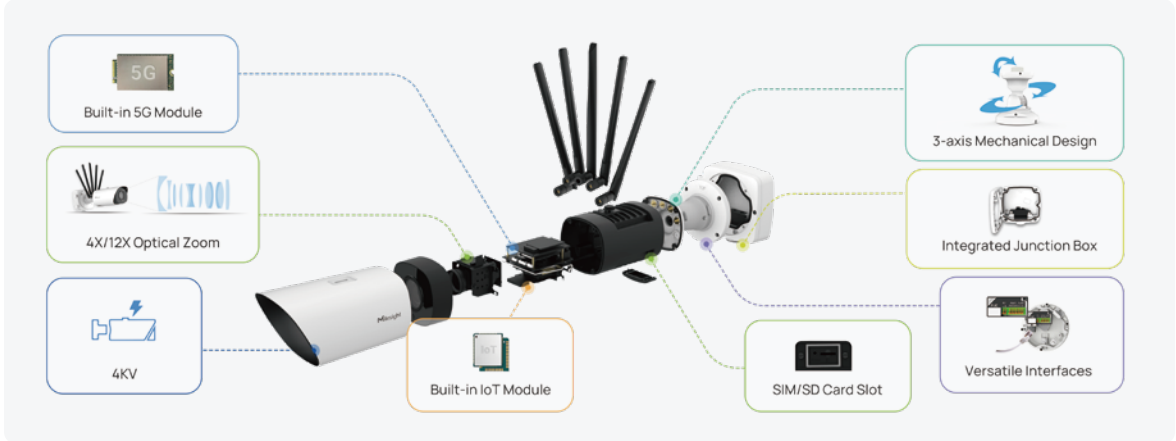


- 140dB Super WDR
- Up to 180m IR Distance



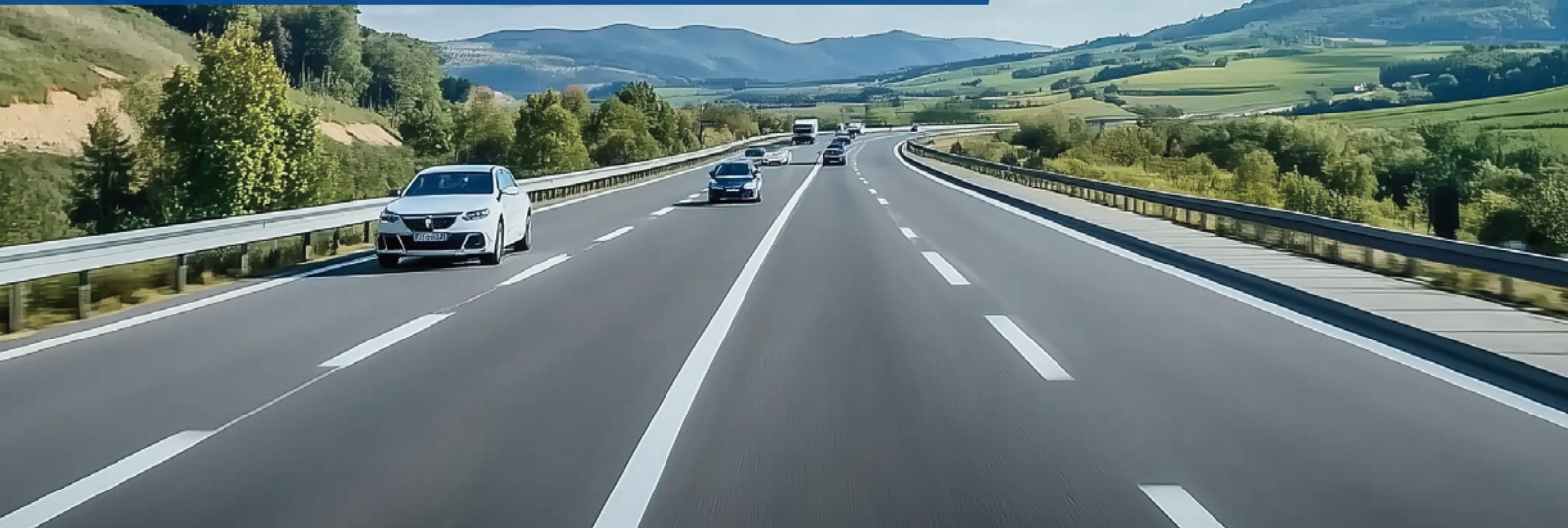
Easy Deployment & Compact Structure

- Built-in 5G Module
- Built-in IoT Module
- 3-axis Mechanical Design
- Integrated Junction Box



Intelligent Traffic

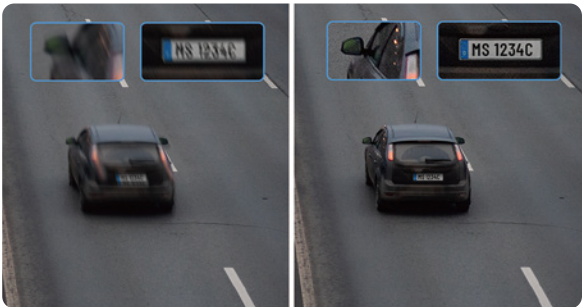
TrafficX Series



TrafficX Camera
TS5510-GH



TrafficX Enforcement Camera
TS5511-GH



Sharp Capture

- 250km/h Recognizable Capture Speed
- 99% Capture Rate
- Global Shutter for Fast-moving Capture
- AI ISP for Superior Image



Precise Recognition

- 98% License Plate Recognition Rate
- Frame Parity Flashing for Precise ANPR
- 740nm/850nm Dual IR Wavelength



More Highlights

- AI-powered Onboard ANPR
- 2*5MP Dual Lenses
- Up to 50m ANPR Distance
- 2-3 Lanes Covering
- 1TB SD Card Storage
- Support GPS/4G Module
- TCP/HTTP/MQTT & CGI/API

Applications



Multi-lane Free Flow (MLFF)



Red Light Violation Detection



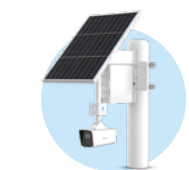
Toll Gate



Low Emission Zone Monitoring

Intelligent Traffic

Road Traffic Management Series



4G Solar-powered ANPR Camera



4G Solar-powered Traffic Sensing Camera



AI Road Traffic Pro Bullet Plus Camera



AI Road Traffic Radar Pro Bullet Plus Camera



AI Road Traffic Supplement Light Pro Bullet Plus Camera



AI Road Traffic PTZ Bullet Plus Camera



AI Road Traffic PTZ Bullet Camera



AI Road Traffic Speed Dome Camera



AI Road Traffic Parking Detection Pro Bullet Plus Camera



AI Road Traffic 5G Pro Bullet Plus Camera

AI LPR & Vehicle Attributes Recognition

Vehicle Type
 Motorized Vehicle:
 Car, SUV, Van, Bus, Fire Engine, Ambulance, Truck, Motorbike
 Non-motorized Vehicle:
 Bicycle, E-Scooter

Vehicle Brand
 Audi, Toyota, Buick, Aston Martin, Mercedes-Benz, BMW, Mazda, Tesla, Honda, Volkswagen, Ford, Jeep, Lexus, Maybach

Plate Color
 Black, Yellow, Green, White, Blue, Red

Vehicle Color
 Red, Yellow, Green, Blue, Brown, Grey, White, Black, Purple

Plate Number
 X-123X

ADR License plate
 33, 1088

Violation Management

Reverse Driving Detection

Specific Lane Management

Speeding Detection

No-Plate Detection

Red Light Violation Detection

On-street Parking Violation Detection

Traffic Flow Management

More Highlights

2-Lane Coverage

Up to 120km/h Vehicle Speed

3D Radar Technology

Supplement Light for Challenging Lighting

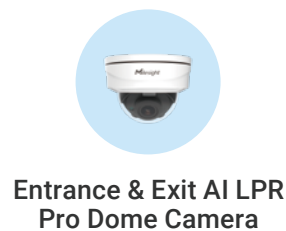
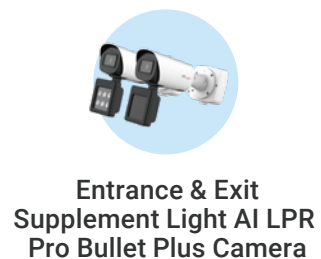
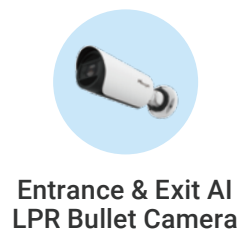
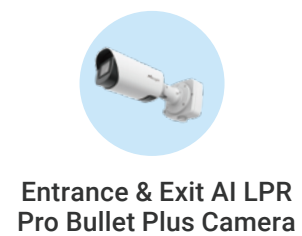
LPR Smart Search

Wiegand Protocol Supported

Parking
Level 2 203
Level 1 41

Intelligent Traffic

Parking Management Series



Entrance & Exit Management

- AI-powered LPR Algorithm
- Black/White List
- No-plate Vehicle Detection
- Wiegand Interface for Access Control
- Integrated Supplement Light



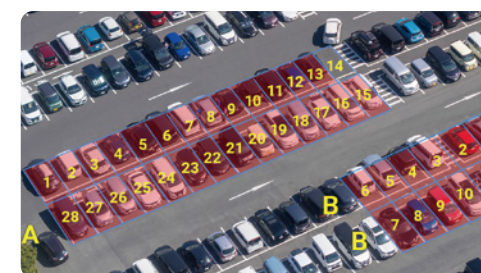
Indoor Parking Guidance

- Dual Lens for 6 Spaces
- Customizable Multi-color Indicator
- AI LPR & Vehicle Attributes Recognition



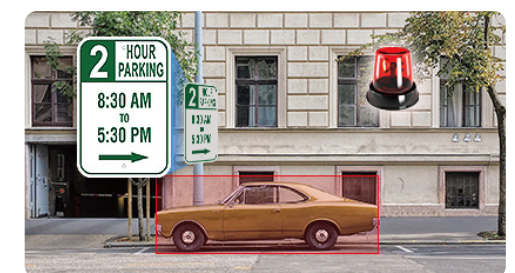
Video Surveillance

- Image Capturing and Video Recording for Vehicle Security Incidents



Outdoor Parking Management

- Occupation Detection (Up to 100 Space)
- LPR Parking Detection (4 Space & License Plate Recognition)

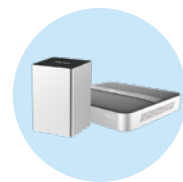


On-street Parking Management

- Parking Occupancy Detection & Residence Time
- Parking Violation Detection



NVR Series



4K H.265 Mini NVR 1000 Series
4/8-CH
10TB Storage



4K H.265 Pro NVR 5000 Series
8/16-CH
2*10TB Storage



4K H.265 Pro NVR 7000 Series
16/32-CH NVR
4*10TB Storage



4K H.265 Pro NVR 8000 Series
32/64-CH
8*10TB Storage

Key Features

- Up to 8*10TB Storage
- Up to 64-CH Video Input
- Up to 4K Decoding Performance
- Multi-screen Output
- Dual Lan Giga Network Ports
- ANR/Software RAID/N+1 Hot Spare
- Storage Quota
- Dual Stream Recording
- Transcoding
- POS Integration
- Online Upgrade
- Smart People Counting Analytics
- Intelligent Face Detection Management
- Versatile Interfaces



PoE NVR Series



4K H.265 Mini PoE NVR 1000 Series
4 PoE Plug & Play
4/8-CH
10TB Storage



4K H.265 PoE NVR 5000 Series
8/16 PoE Plug & Play
8/16-CH
2*10TB Storage



4K H.265 PoE NVR 7000 Series
16/24 PoE Plug & Play
16/32-CH
4*10TB

Key Features

- Up to 24*PoE Plug and Play
- Up to 4*10TB Storage
- Up to 48-CH Video Input
- Up to 4K Decoding Performance
- Multi-screen Output
- ANR/Software RAID/N+1 Hot Spare
- Storage Quota
- Dual Stream Recording
- Transcoding
- POS Integration
- Online Upgrade
- Smart People Counting Analytics
- Intelligent Face Detection Management
- Versatile Interfaces



Enterprise NVR Series



Enterprise NVR 1U Series
8/16CH
Up to 2*20TB



Enterprise NVR 2U Series
16/32CH
Up to 6*20TB



Enterprise NVR 3U Series
64/128CH
Up to 16*20TB

Key Features

- 8/16/32/64/128-CH Models Available
 - Pre-loaded with Milesight VMS Enterprise
 - Windows System
 - Central Management for Single Site & Multiple Sites
- High Scalability
 - AI & IoT Capabilities
 - Ready-to-go Design for Easy Installation
 - N+M Failover



PoE Switch

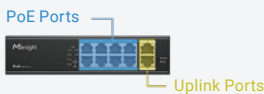


4-Port PoE Switch



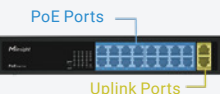
4*10/100Mbps PoE Ports
+2*100Mbps Uplink Ports

8-Port PoE Switch



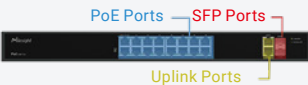
8*100Mbps PoE Ports
+2*100Mbps Uplink Ports
12*100Mbps Uplink Ports

16-Port PoE Switch



16*10/100Mbps PoE Ports
+2*100Mbps Uplink Ports

16-Port SFP PoE Switch



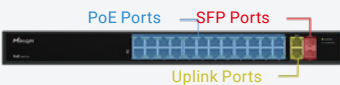
16*100Mbps PoE Ports
+2*100Mbps Uplink Ports
+2*100Mbps SFP Ports

24-Port PoE Switch



24*10/100Mbps PoE Ports
+2*100Mbps Uplink Ports

24-Port SFP PoE Switch



24*100Mbps PoE Ports
+2*100Mbps Uplink Ports
+2*100Mbps SFP Ports

Key Features

- IEEE 802.3af/at Protocol
 - 4KV Surge Protection
 - Gigabit Uplink Ports
- SFP Uplink Ports
 - 250m Extend Mode
 - Up to 400W Power Budget

Milesight Backend Software Solution

VMS



Manage Anytime with
M-VMS Mobile



M-VMS Mobile

CMS



Milesight CMS

- A central management system for Milesight cameras and Milesight NVRs
- Fully integrated with Milesight network cameras and NVRs
- Comprehensive management via IP/Domain, P2P and Milesight DDNS
- Support H.265/H.264 video compression
- Support multiple monitors (Up to 4 monitors, 64-CH for each monitor)
- Support up to 256 devices
- Support two-layer E-map
- Support Milesight VCA functions
- Support advanced functions like ANPR solution, Heat Map and Auto Tracking, etc.
- Support Crowd Management Solution

APP



M-Sight Pro APP

- Simultaneously managing Milesight network cameras and NVRs
- Support Milesight Cloud Management
- Smooth and High Quality Live Streaming
- Support image capture/video recording functions
- File management
- Efficient Split Playback
- Transcoding to get better playback performance
- Support scanning QR code to get a remote view via P2P
- Support iOS and Android handheld device
- Support alarm video push notification

TOOLS



Milesight Smart Tools

- Unified management for network cameras and NVRs
- Batch settings for Milesight devices
- Online batch upgrade for Milesight devices
- Fast, comprehensive, and powerful calculation
- Efficiently calculation report PDF export

Milesight ACCESSORIES MAP

V7.7

