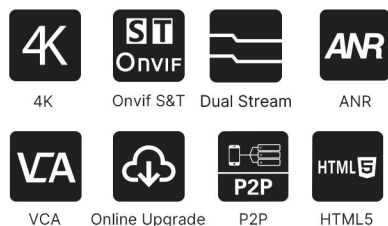


Milesight

4K Mini NVR 1000 Series

4K



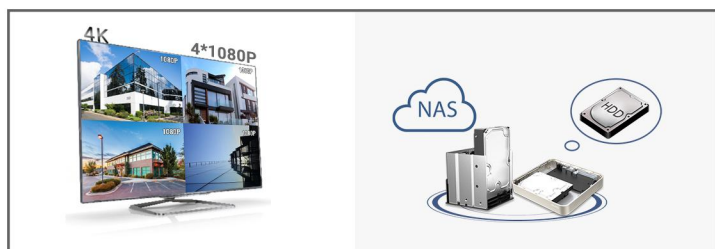
DATASHEET

KEY FEATURES

- ▶ 4/8-CH Network Video Input (Up to 4/8 channel IP cameras can be connected.)
- ▶ Dual Stream Recording (Supporting Primary Stream and Secondary Stream recording simultaneously.)
- ▶ Auto Backup (The latest 24 hour's video will be automatically backed up to USB port devices or NAS after setting up the backup.)
- ▶ Versatile Interfaces (A whole array of ports provides all necessary features for effective surveillance.)

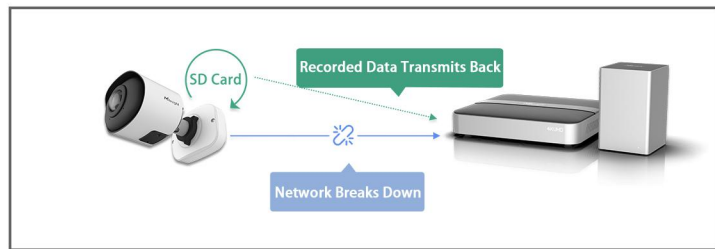
Power Decoding Capacity & Flexible Storage Options

- The 4K NVR is equipped with solid 4K decoding and display capabilities and maximum supports simultaneous viewing of 4*1080P or 8*720P network cameras.
- Providing flexible storage options including HDD and NAS to address the needs for versatile storage.



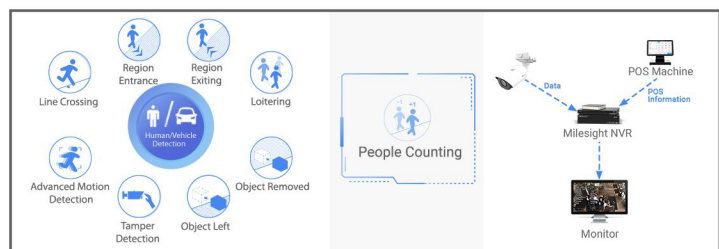
Reliability

- ANR can store video data on the camera storage card when network between IPC and NVR is disconnected and retransfer the recorded video to NVR after network recovers.



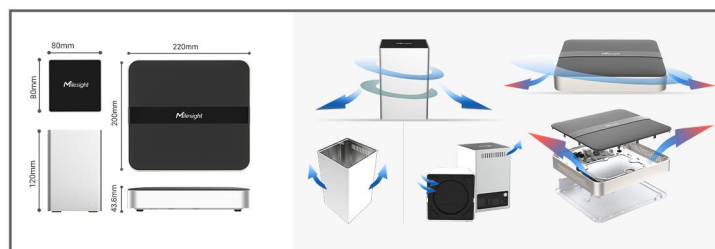
AI Video Analytics & POS Integration

- All-in-one to Manage AI:
VCA Function focus on human and vehicle detection.
People Counting provides high-accuracy data and statistic reports.
- POS machine information can be transferred to and displayed on the NVR.



Ultra Mini Size & Thermal Design

- Ultra-mini size offers a compact design without compromising functionality, providing an easier way to ensure high-quality video management.
- The metal panel on the bottom of the NVR dissipates the heat effectively and the ventilation holes on the side and bottom panels maximize airflow and carry heat away.



4K Mini NVR 1000 Series



Model			MS-N1004-UC	MS-N1008-UC	MS-N1008-UNC
Video/Audio Input	Network Video Input		4-CH	8-CH	
	Bandwidth	Incoming	40Mbps	80Mbps	
		Outgoing	40Mbps	80Mbps	
Video/Audio Output	HDMI Output		1-CH, Resolution: 3840x2160/30Hz, 1920x1080/60Hz, 1920x1080/50Hz, 1280x1024/60Hz, 1280x720/60Hz, 1024x768/60Hz HDMI Supports Audio Output		
	Dual Stream		Support		
	Recording Resolution/ Synchronous Playback		<p>*The recommended parameters are theoretical values only. Actual performance may vary depending on the usage environment, the number of connected cameras, and their models.</p> <div><div>When the bite rate is ≤2048 kbps: 1*(30fps @8MP), 1*(30fps @6MP), 1*(30fps @5MP), 2*(30fps @4MP), 2*(30fps @3MP), 4*(30fps @1080P), 4*(30fps @720P)</div><div>When the bite rate is ≤2048 kbps: 1*(30fps @8MP), 1*(30fps @6MP), 1*(30fps @5MP), 2*(30fps @4MP), 2*(30fps @3MP), 4*(30fps @1080P), 8*(30fps @720P)</div></div>		
Video/Audio Compression	Video Compression		H.264*/H.264		
	Audio Compression		G.711/AAC/G.722/G.726		
	Sample Rate		8KHz/16KHz		
Storage	SATA		1*SATA HDD(3.5’’)		2*SATA HDD(2.5’’)
	Capacity		Up to 10TB capacity for each HDD		Up to 4TB capacity for each HDD
Recording Management	Recording Type		Continuous, Event (Motion Detection, Alarm, VCA, Smart Analysis)		
	Snapshot Type		N/A		
	Playback Type		General Playback, Event Playback, Tag Playback, Split Playback, Picture Playback		
Backup	Backup		Video Backup, Image Backup		
Network	Protocol		IPv4/IPv6, TCP, UDP, RTP, RTSP, RTCP, HTTP, HTTPS, DNS, DDNS, DHCP, NTP, SNTP, SMTP, SNMP, UPnP, NFS		
External Interface	Network Interface		1*RJ45 10/100Mbps		1*RJ45 10/100/1000Mbps
	USB Interface		2*USB 2.0		
General	Compatibility		ONVIF, API		
	Advanced Function		ANR		
	ANPR		N/A		
	Video Analysis		Region Entrance, Region Exiting, Advanced Motion Detection, Tamper Detection, Line Crossing, Loitering, People Counting, Object Left, Object Removed		
	Keyboard Control		Milesight Keyboard (MS-K01)		
	Power Supply		DC 12V 2A		DC 12V 1.5A
	Consumption		≤2.3W(Without HDD)		≤4.1W(Without HDD)
	Working Conditions		Temperature: -10℃~55℃/Humidity: 10%~90%		
	Dimensions		220mm(W)X200mm(D)X43.6mm(H)		80mm(W)X80mm(D)X120mm(H)
	Weight		0.19Kg		0.85Kg
	Warranty		3/5 Years		

4K Mini NVR 1000 Series

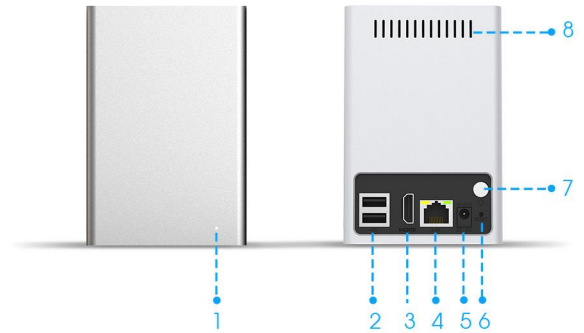


Interfaces

MS-N1004-UC/ MS-N1008-UC



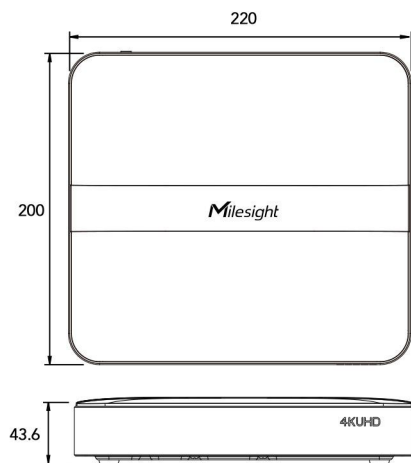
MS-N1008-UNC



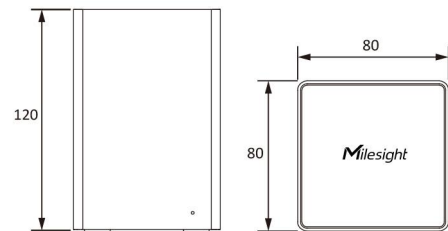
1. LED Indicator 2. USB 3. HDMI 4. LAN 5. Power 6. Reset 7. Power Button 8. Ventilation Hole

Structure Diagrams

MS-N1004-UC/ MS-N1008-UC

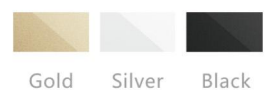
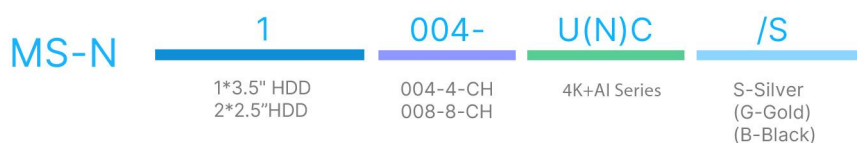


MS-N1008-UNC



Units: mm

Naming Convention



Misesight | www.misesight.com

Contact Us: sales@misesight.com support@misesight.com

Add: 220 NE 51st Street, Oakland
Park, Florida 33334, USA
Tel: +1-800-561-0485

Add: 925, Anyang SK V1 Center, LS-ro
116beon-gil, Dongan-gu, Anvang-si, Korea
Tel: +82-31-990-7732

Add: Building C09, Software Park
Phase III, Xiamen 361024, Fujian, China
Tel: +86-592-5922772

