



Milesight Release Note for Network Camera

Firmware Version: 63.8.0.5-r4

Applicable Model: MS-Cxxxx-xxPG1

Release Date: 28th November 2025

1. Overview

Milesight offers a variety of sensor products designed to capture valuable data. By innovatively applying AI, 5G, and IoT technologies, Milesight brings significant impact to various applications. Milesight manufactures products with exceptional image quality, unparalleled flexibility, and reliability for the global market. Milesight is pleased to announce the release of the new firmware version 63.8.0.5-r4 for Camera.

This version introduces several advanced events tailored for more specialized and vertical applications, including **Hard Hat Detection**, **Sound Classification**, **Fall Detection**, **Violence Detection**, and **Privacy Protection**.

Additionally, new image enhancement features have been added to deliver optimal image performance. For example, **AI ISP** significantly improves image clarity, detail, and reduces image noise—especially under low-light conditions. Finally, known bugs have been fixed.

2. Firmware Version Download

To download the latest firmware version, please click the following link:

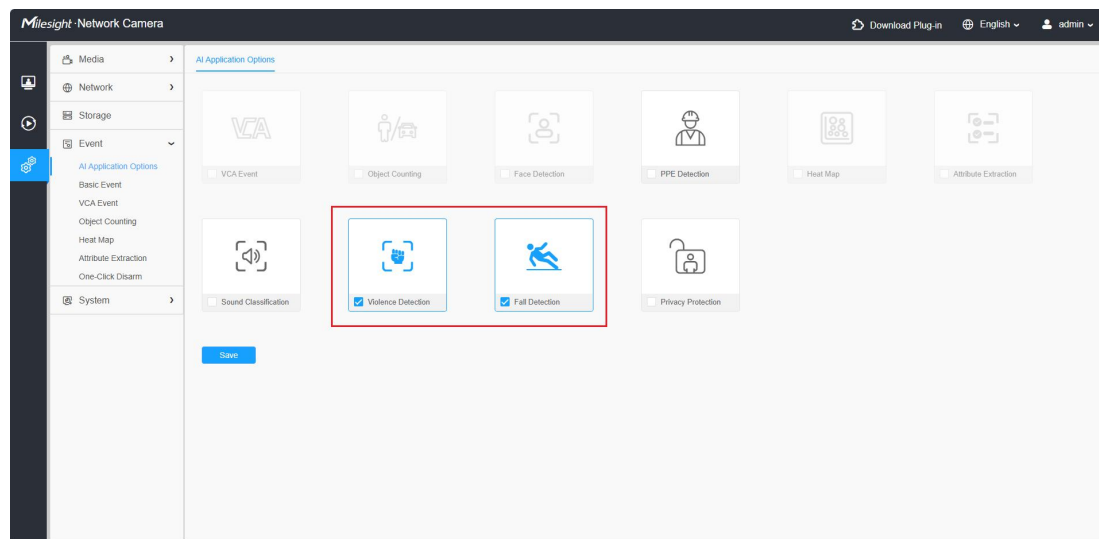
[Firmware Download|The Latest Innovation|Milesight](#)

3. What's new

3.1 New Features

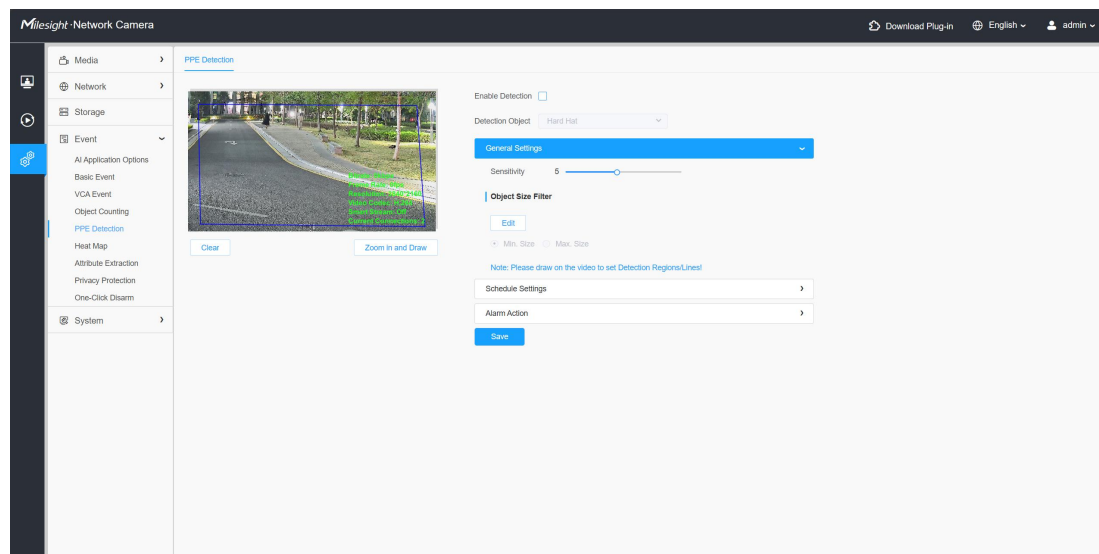
(1) Added Several Advanced Events

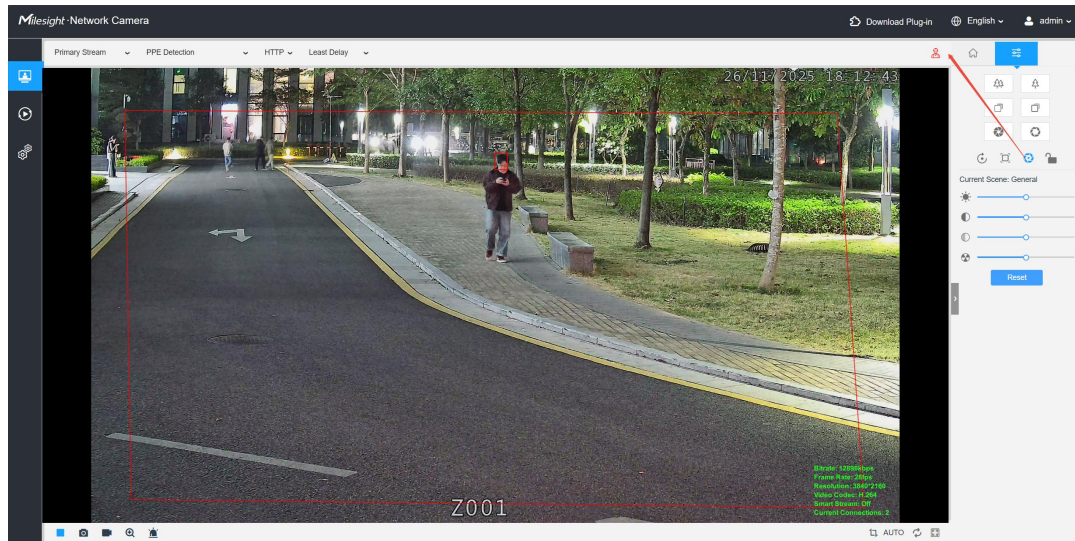
- ❖ To ensure camera stability and optimal performance, Violence Detection and Fall Detection cannot be enabled simultaneously with the following features: VCA Event, Object Counting, Face Detection, Heat Map, and Attribute Extraction.



- ① **PPE Detection (Hard Hat Detection)** – Detects whether individuals are wearing safety hard hat and triggers an alarm when a person is identified without proper head protection.

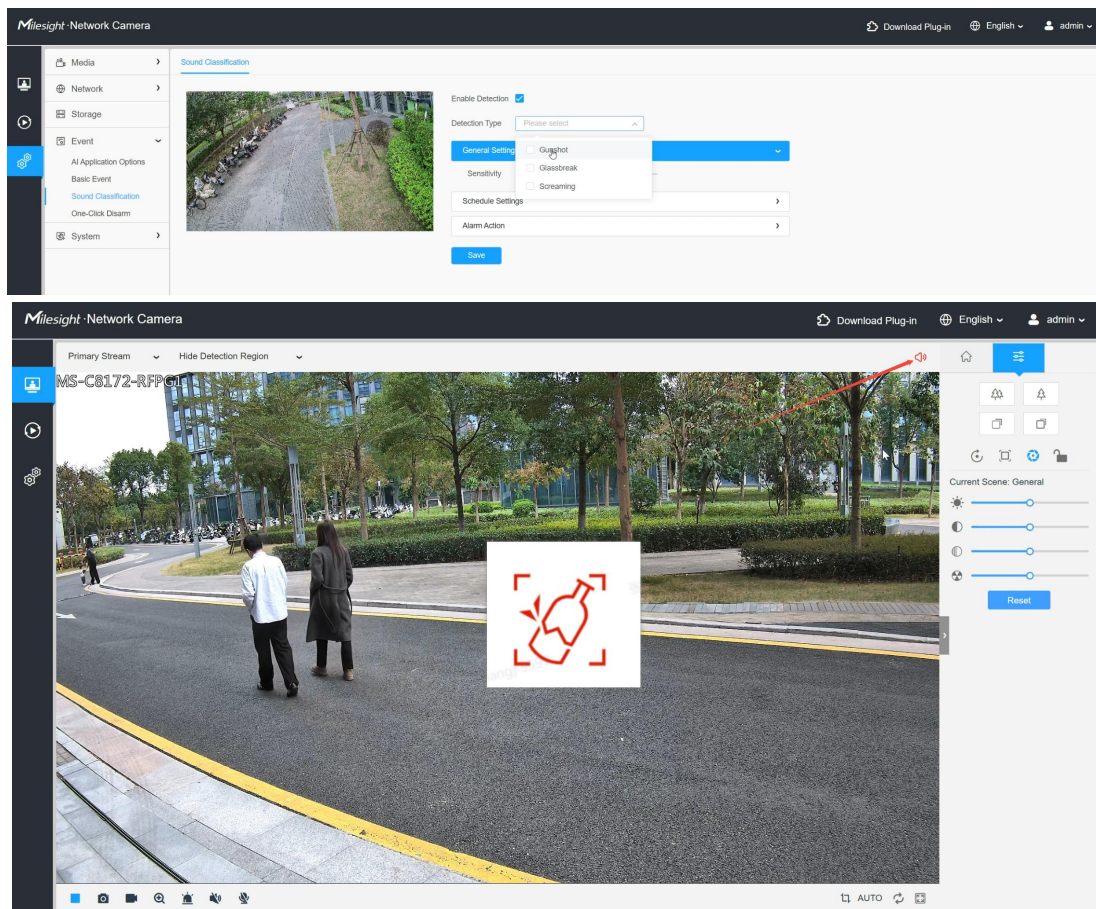
Safety Clothing Detection is coming soon.



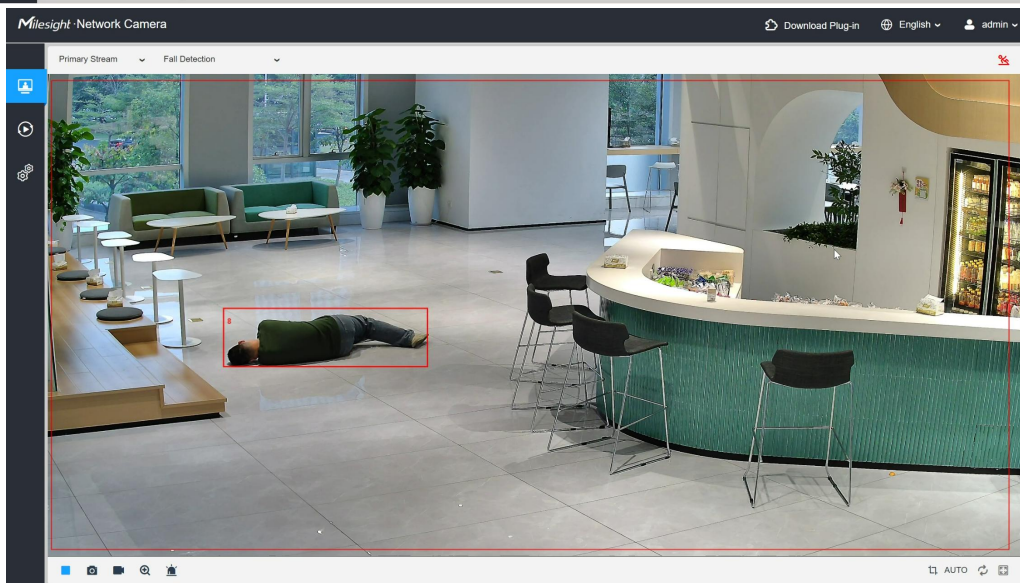
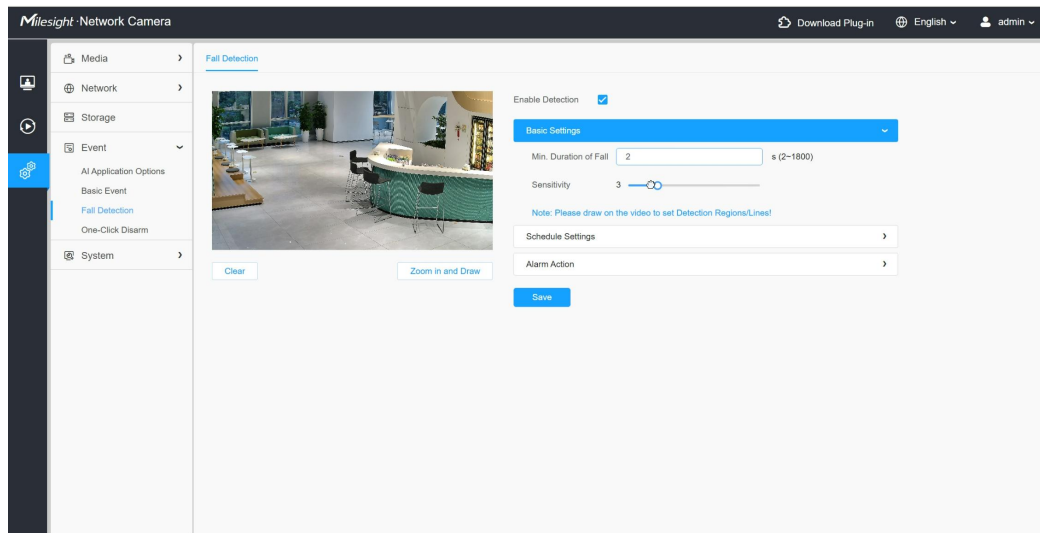


- ② **Sound Classification** – Supports instant detection of gunshot, glass breaking, and screaming sounds.

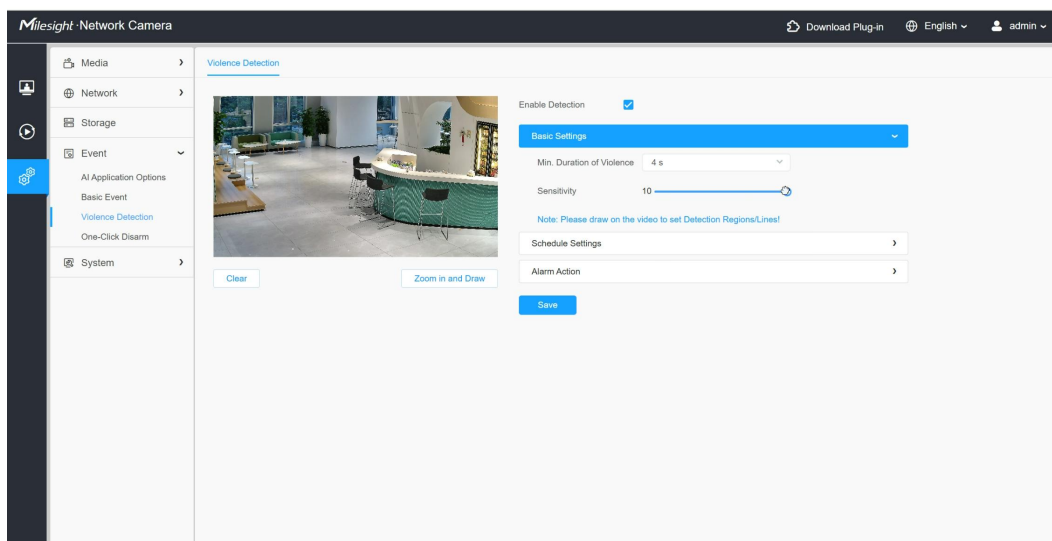
Available only on MS-CXX72-XXPG1 models.

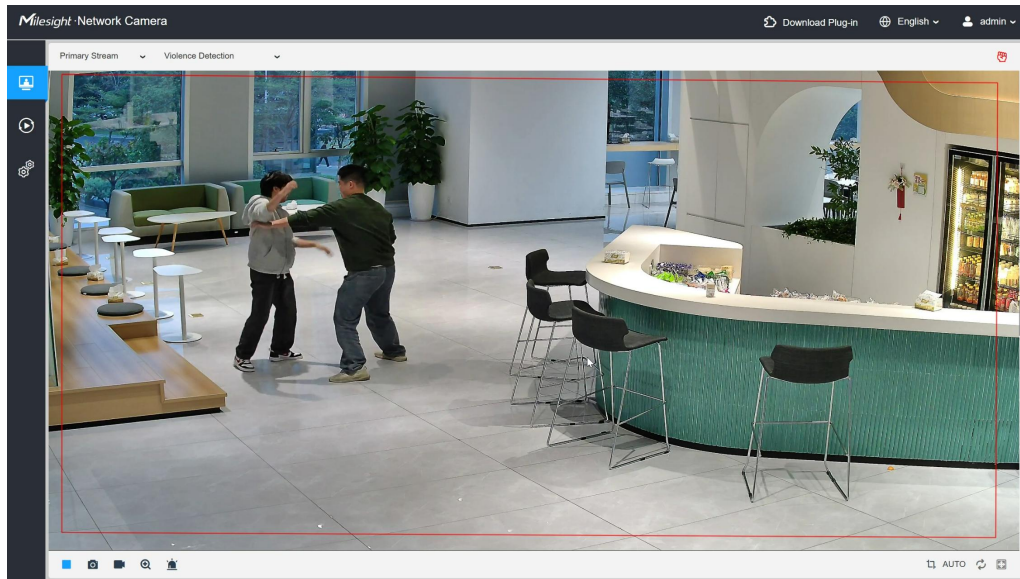


- ③ **Fall Detection** – Identifies human fall events and triggers alarms to enable timely assistance.



④ **Violence Detection** – Detects violent behaviors and triggers alarms to help intervene early and improve scene safety.



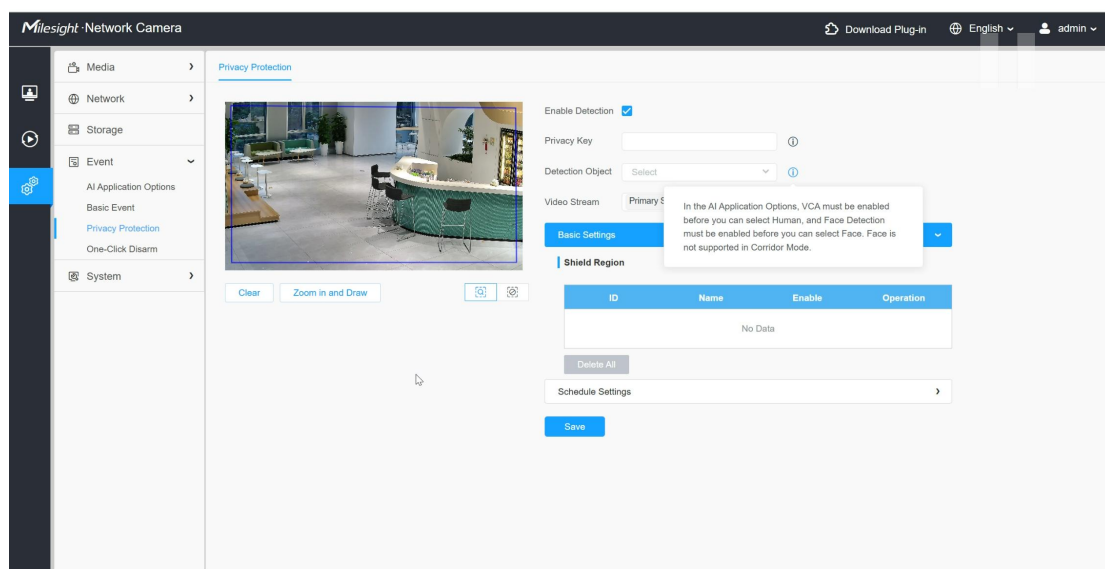


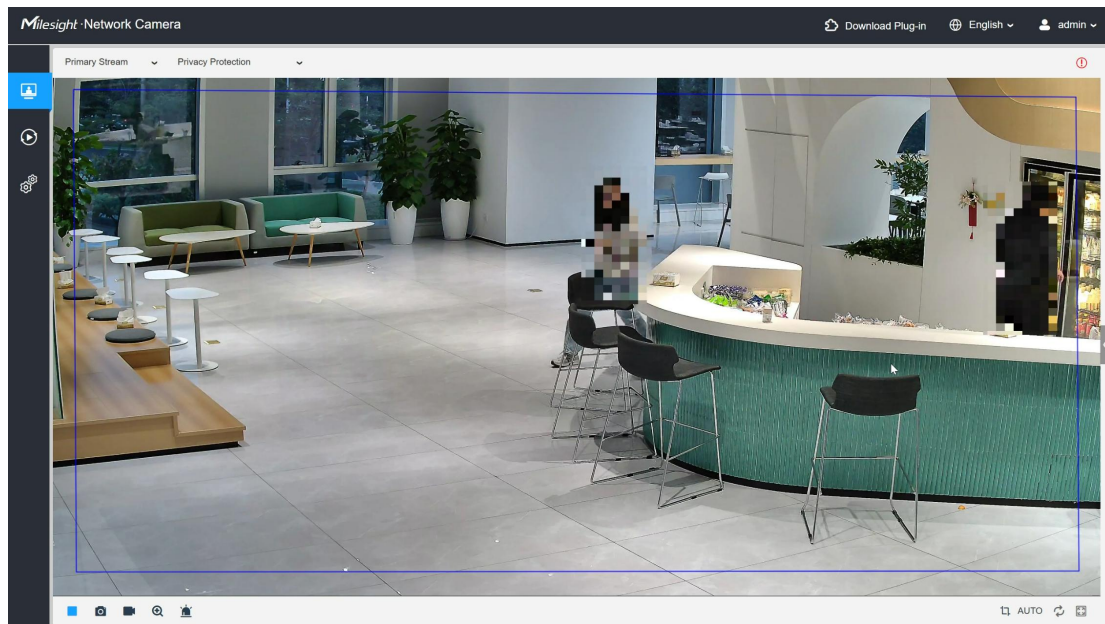
- ⑤ **Privacy Protection** – Automatically detects faces or human bodies in the video stream and applies mosaic masking. Supports both Primary and Secondary streams and is compatible with H.265/H.264 encoding formats.

Note:

To use *Face Masking*, **Face Detection** must be enabled.

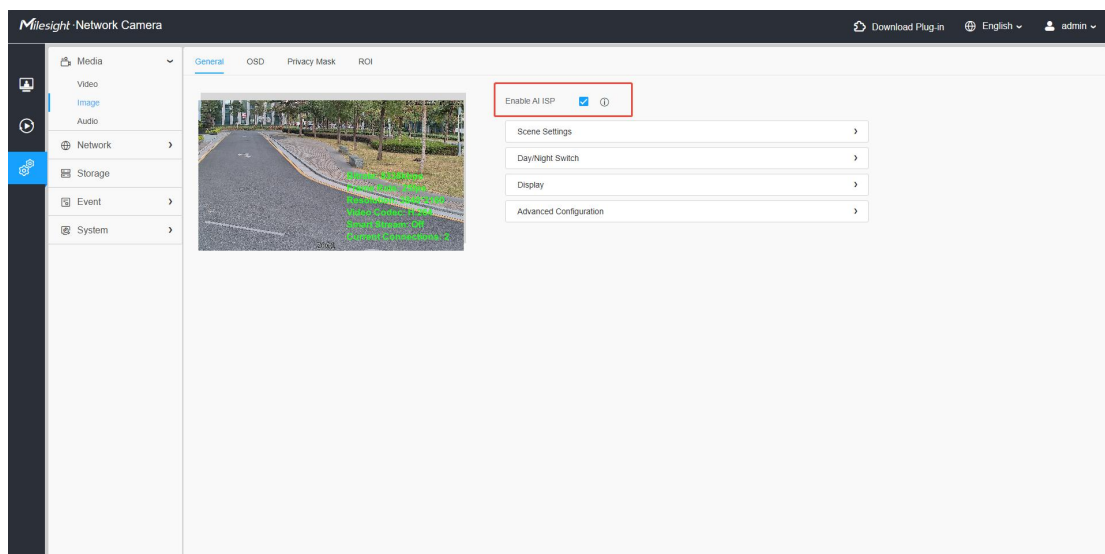
For *Human Body Masking*, please enable **VCA Human Detection**.



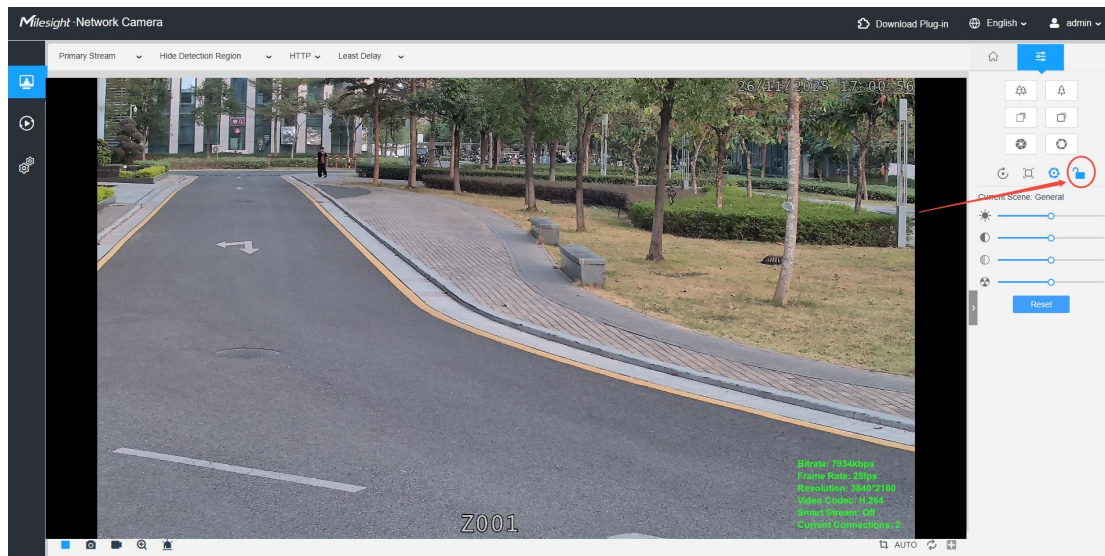


(2) Added Several Image Enhancement Functions

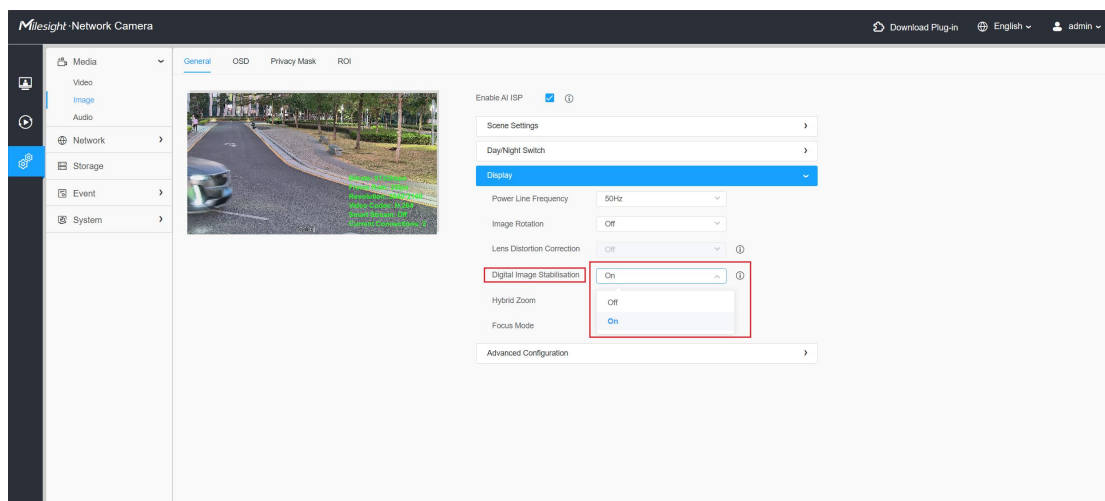
① **AI ISP Enhancement** – Improves image quality and significantly reduces noise in low-light environments, delivering clearer and more detailed visuals.



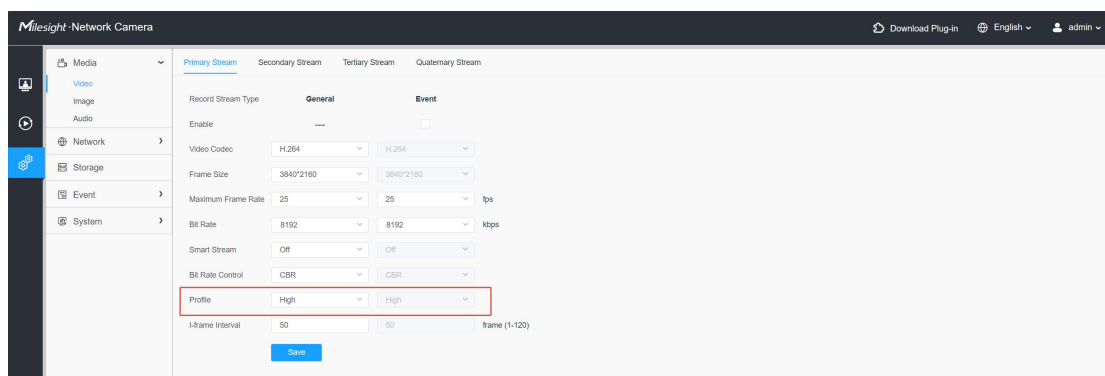
② **PTZ Lock** – Prevents unintended zoom or focus changes by locking operation settings, ensuring stable and consistent live view settings.



③ **Digital Image Stabilization (DIS)** – Reduces image motion blur caused by camera vibration or slight shaking, ensuring clearer and more stable video output.

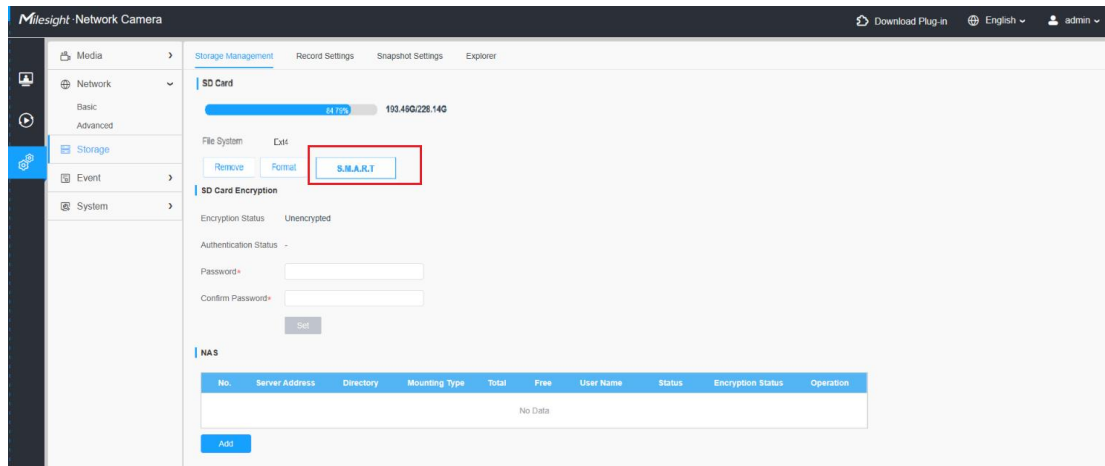


④ **Set the H.264 Profile Default Value to High** – The default encoding profile for H.264 has been updated to High, providing better compression efficiency and improved video quality.



(3) SD Card Health Monitoring Enhancement.

- ❖ Added S.M.A.R.T (Self-Monitoring, Analysis, and Reporting Technology) detection in the Storage interface to detect and display the SD card's health status. When supported by the SD card, users can click to view detailed health status information, helping prevent data loss caused by card damage.
- ❖ Enhanced the SD card's read/write performance, enabling faster data writing and retrieval for improved efficiency.

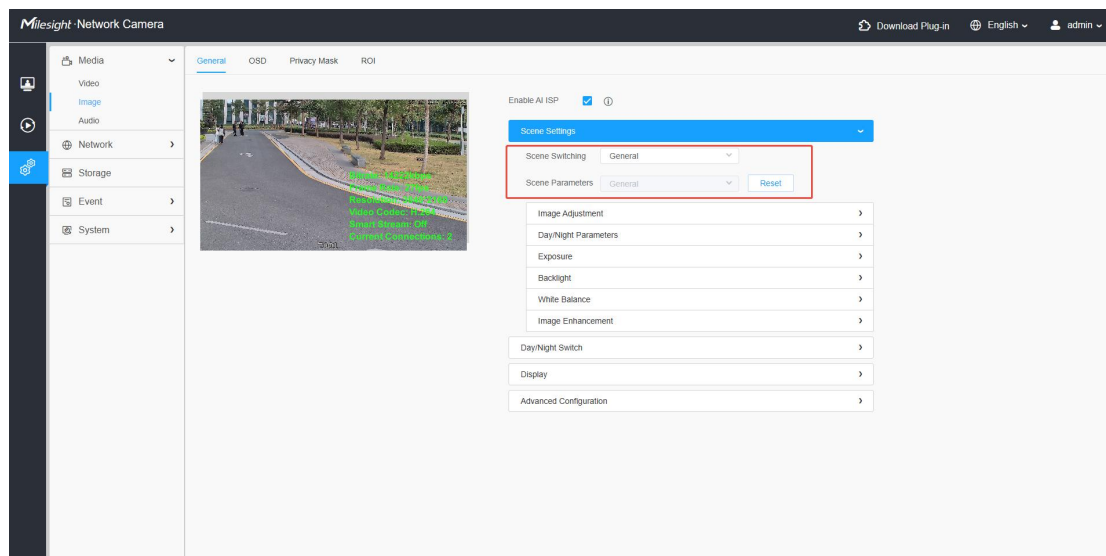


S.M.A.R.T	
Info	Data
version	v0.9.0(4dff9b6) arm64
date	2025-04-11T15:40:44.000
device	/dev/mmcblk0
addTime	FALSE
signature	0x70 0x58
Longsys	TRUE
SMARTVersions	2097152
sizeofDevSMART	96
originalBadBlock	80
increaseBadBlock	0
writeAllSectNum	13203026 Sector(512Byte)
replaceBlockLeft	80
degreeOfWear	0.03 Cycle
sectorTotal	1999749120
remainLifeTime	100%
remainWrGBNum	3336.14TB
lifeTimeTotal	3000.00 Cycle
phyWrGBNum	0.03TB
success	TRUE

3.2 Optimizations

(1) Optimized image scene switching settings.

When the user selects a scene in Scene Switching, the Scene Parameter will automatically switch to display the corresponding parameters of that scene. Any adjustments to the scene parameters take effect in real time.



(2) Enhanced integration with a broad range of third-party systems, ensuring a robust, reliable, and efficient security solution.

For example, the HTTP push event content has been optimized to keep camera-generated events consistent with third-party platforms.

Additionally, the ONVIF interface has been improved, and video attachments for SMTP event push have been added for Sentinel VMS system.

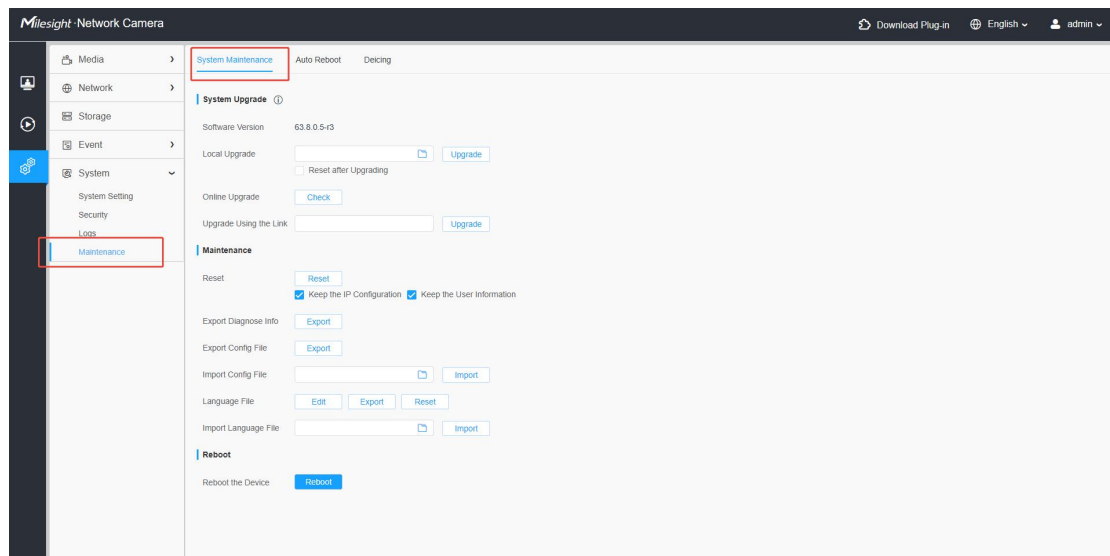
3.3 Bug Fixed

(1) Fixed known bugs.

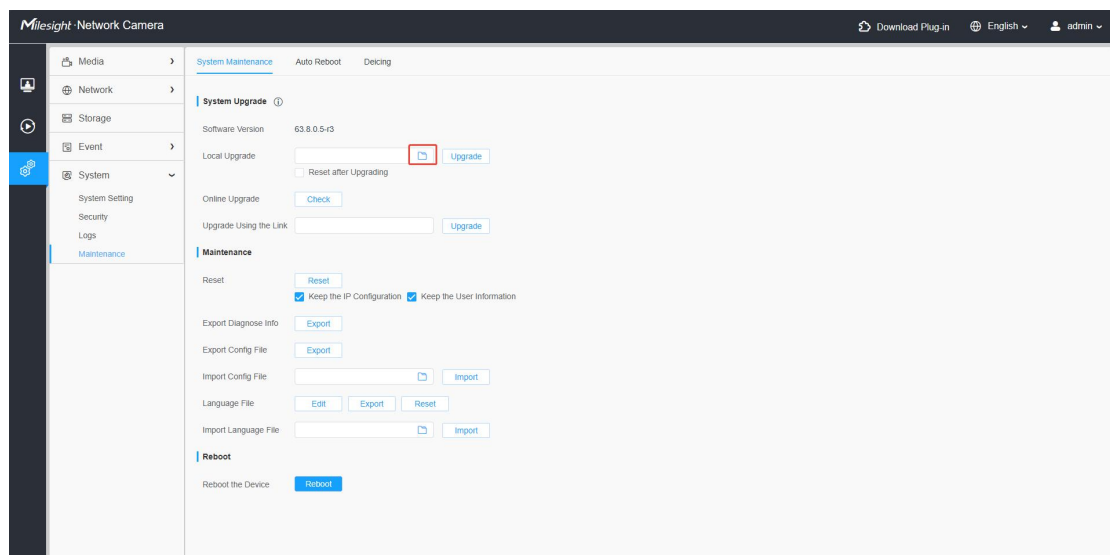
4. Upgrade steps

Please check each model with the right firmware version as mentioned above, then upgrade as follows:

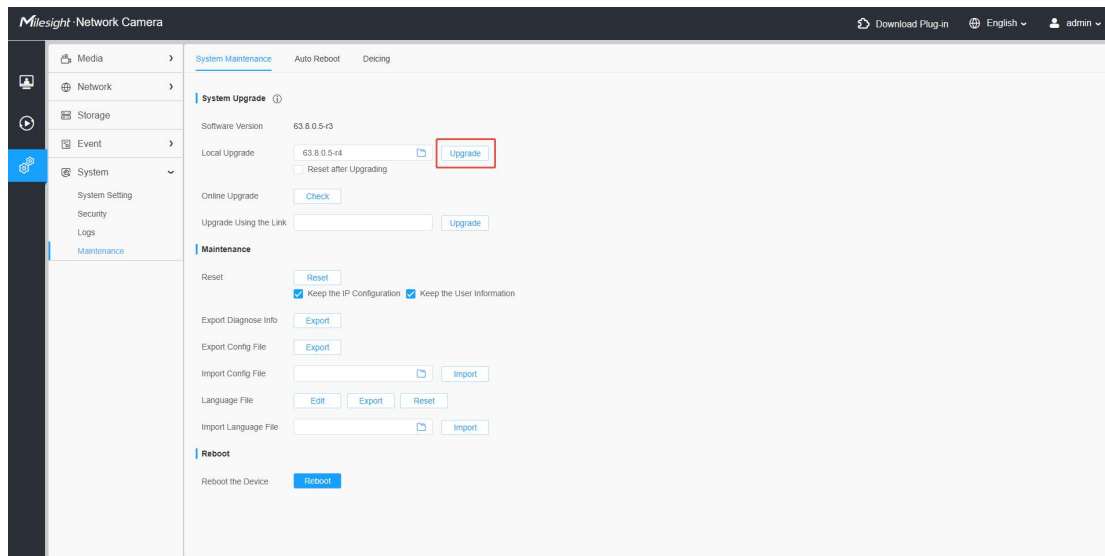
Step 1: Go to the web page of Network Camera, Settings -> System -> Maintenance -> System Maintenance.



Step 2: Choose the upgrade file.



Step 3: Click the "Upgrade" button, then please wait about 1~3 minutes. The upgrade will be done after the system reboots successfully.



——END——