



# QUICK START GUIDE

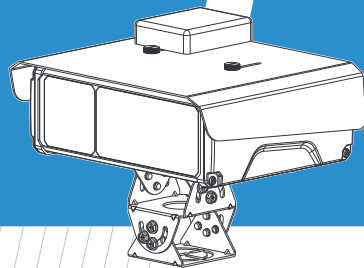
SingleVision TrafficX Camera



Datasheet



User Manual



**Milesight** | *Make Sensing Matter*

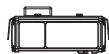
🏢 Milesight IoT Co., Ltd.    🌐 [www.milesight.com](http://www.milesight.com)

**TrafficX**

## Table of Content

1. Package Contents .....	2
2. Hardware Overview .....	3
3. Dimensions .....	4
4. Installation .....	5
5. Assigning an IP Address by Using Smart Tools .....	10
6. Assigning an IP Address via Browser .....	11
7. Accessing from the Web Browser .....	11
8. FCC Statement .....	12

## 1. Package Contents



SingleVision  
TrafficX Camera x 1



Power & Multi-functional  
Cable X1



RS485 & 12V DC  
Output Cable



Ethernet Adapter Cable



Terminal x 2



Screwdriver x 1  
(Only applicable for the  
back cover screws)



Safety Latch x 1



Quick Start Guide x 1



Warranty Card x 1



A91-N Pedestal Mount



A02 V2-to-A91-N Screws



A91-N-to-A92-N Screws



Camera-to-A91-N Screws



SSD Mounting Screws

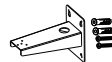


Water-proof Connector x 1

## Optional



Power Supply  
Adapter x 1

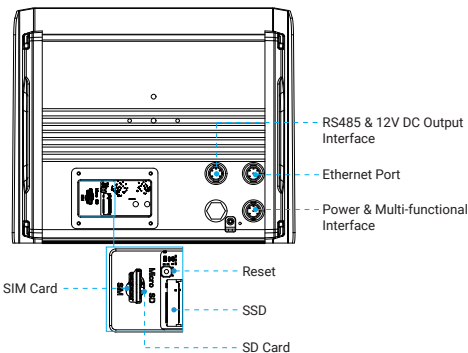
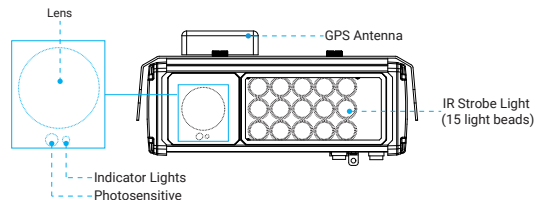


A92-N Wall Mount x 1

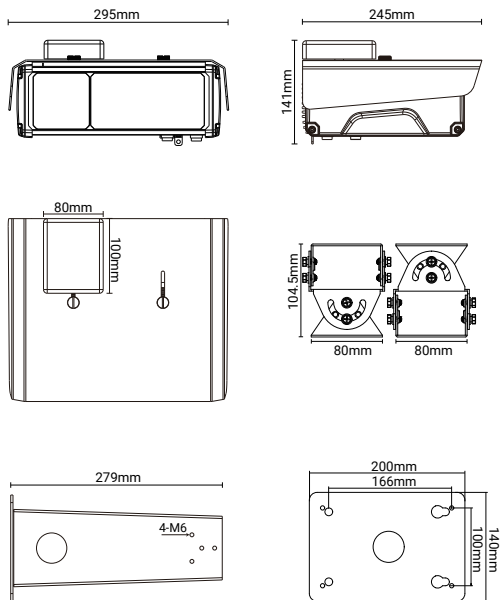


A02 V2 Pole Mount

## 2. Hardware Overview



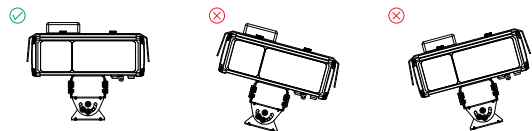
### 3. Dimensions



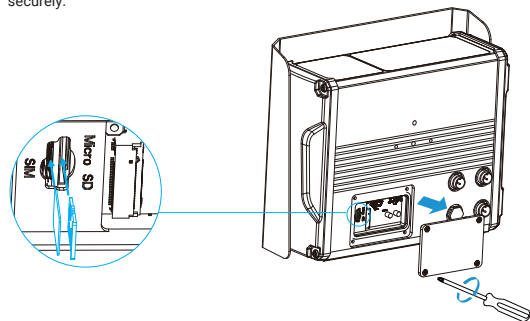
### 4. Installation

#### Note:

1. If the installation environment is column-style, it is recommended to purchase the A02 V2 Pole Mount auxiliary bracket for use.
2. Please ensure that the camera is installed in the center position, and it is not recommended to adjust or tilt it towards the left or right direction.

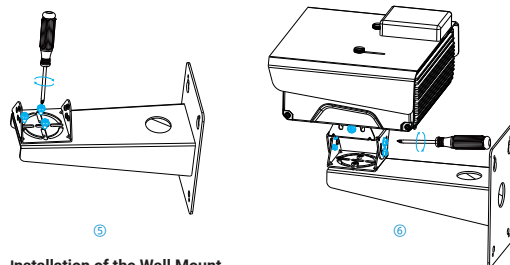
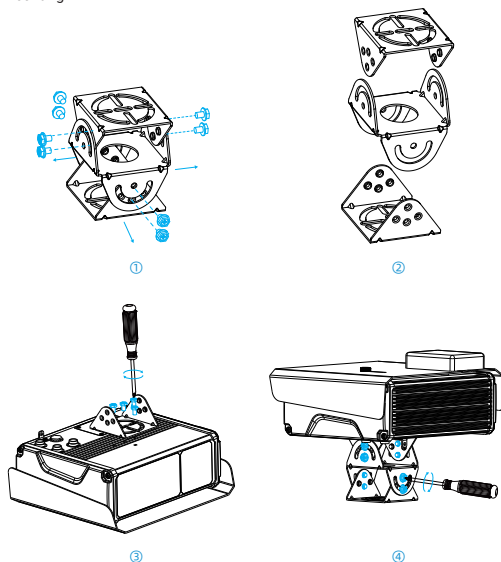


**Step 1:** Use a screwdriver to open the back cover at the bottom of the camera. Insert the SD card and SIM card. Close the back cover and tighten the screws securely.



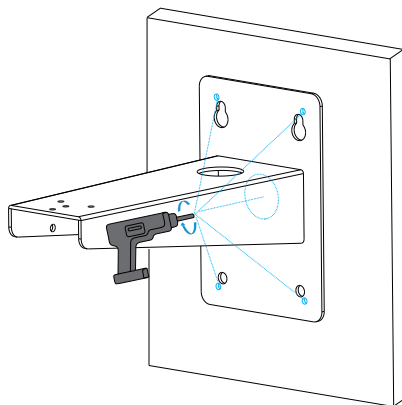


**Step 2:** Lock the A91-N bracket onto the bottom of the camera for pedestal mounting. The A91-N can also be used together with the A92-N bracket for wall mounting.



### Installation of the Wall Mount

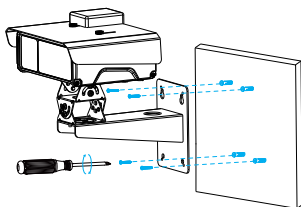
**Step 1:** Punch holes at the corresponding installation positions on the vertical plane.



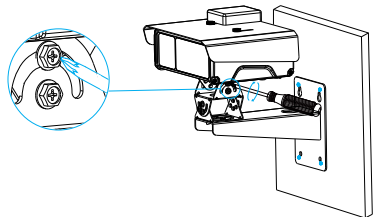
**Note:**

Inspect the condition of the installation surface to ensure sufficient support and strength, avoiding wall detachment or collapse.

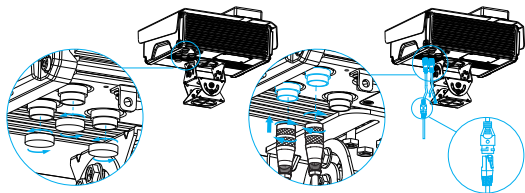
**Step 2:** Align the bracket with the screw holes on the surface, and secure the camera bracket using screws.



**Step 3:** To adjust the camera angle, loosen the screws indicated on the bracket as shown in the diagram. The bracket can then be rotated for adjustment. Once it is properly adjusted, tighten the screws to secure the bracket in place.

**Cable Connection**

**Step 1:** Unscrew the protective cover at the indicated position on the camera, remove the protective covers from the two tail wires, connect them to their respective positions, and tighten the threaded connectors.

**Note:**

1. The output options of the RS485 & 12V DC Output Cable

Red	DC+	Yellow	RS485 A
Black	DC-	White	RS485 B

2. The output options of the multi-functional cables

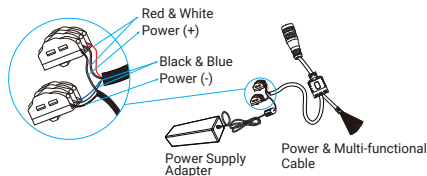
Yellow	IN1	Orange	GND
White	IN2	Black	ALARM OUT
Blue	IN3	Gray	ALARM OUT
Red	IN4	Pink	RS485 A
Green	RS485 B	Light Blue	Strobe Out1
Brown	Strobe Out2	Purple	Strobe GND
Red&White	SYNC	Black&White	SYNC GND

3. The output options of the power cables

Red	Power+	Black	Power-
White	Power+	Blue	Power-

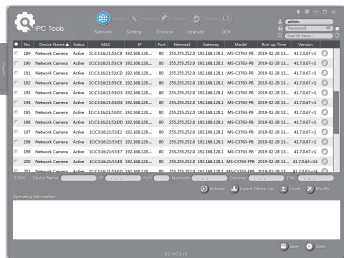
To connect the power cable to the power adapter, follow these steps:

1. The power cable has 4 connectors: red and white cable connectors, as well as black and blue cable connectors.
2. Use one terminal with 3 holes to connect the red and white power cables. There is an additional hole for connecting the positive power supply wire of the adapter.
3. Use the other terminal to connect the black and blue power cables. Another hole is designated for connecting the negative power supply wire of the adapter.



## 5. Assigning an IP Address by Using Smart Tools

Smart Tools is a software tool which can automatically detect multiple online Milesight network cameras in the LAN, set IP addresses, and manage firmware upgrades. It's recommended to use when assigning IP addresses for multiple cameras.



## 6. Assigning an IP Address via Browser

If the network segment of the computer and that of the camera are different, please add some 192.168.5.xx(255.255.255.0) for your PC to get access to your cameras, more details can be found on "[Milesight Network Camera Quick Start](#)".

## 7. Accessing from the Web Browser

The camera can be used with the most standard operating systems and browsers. The recommended browsers are Firefox, Chrome, Safari. More information about the plugin installation, please refer to the troubleshooting:

### 5. Milesight-Troubleshooting-Plugin Installation on Windows-IPC

### 6. Milesight-Troubleshooting-Plugin Installation on MAC

The steps to change the IP of cameras are as below:

- 1) Start Smart Tools, click the IPC Tools page, then enter the device information, such as IP address, MAC address, Port number, Netmask, and Gateway, then all related Milesight network cameras in the same network that will be shown.
- 2) Select a camera or multiple cameras according to the MAC addresses.
- 3) Click "Activate" to set the password when using the cameras for the first time (Password must be 8 to 32 characters long, contain at least one number and one letter), and set three security questions (If you forget the password, you can reset the password by answering three security questions correctly).
- 4) Type the user name and password you set, change the IP address or other network values, and then click "Modify" button.
- 5) By double clicking the selected camera or the browser of interested camera, you can access the camera via web browser directly.

More usage of Smart Tools, please refer to the "[Smart Tools User Manual](#)".

## 8. FCC Statement

Any changes or modifications not expressly approved by the party responsible for compliance could void the user's authority to operate the equipment. This device complies with part 15 of the FCC Rules. Operation is subject to the following two conditions:

1. This device may not cause harmful interference.
2. This device must accept any interference received, including interference that may cause undesired operation.

**Note:** This equipment has been tested and found to comply with the limits for a Class B digital device, pursuant to part 15 of the FCC Rules. These limits are designed to provide reasonable protection against harmful interference in a residential installation. This equipment generates, uses and can radiate radio frequency energy and, if not installed and used in accordance with the instructions, may cause harmful interference to radio communications. However, there is no guarantee that interference will not occur in a particular installation. If this equipment does cause harmful interference to radio or television reception, which can be determined by turning the equipment off and on, the user is encouraged to try to correct the interference by one or more of the following measures:

1. Reorient or relocate the receiving antenna.
2. Increase the separation between the equipment and receiver.
3. Connect the equipment into an outlet on a circuit different from that to which the receiver is connected.
4. Consult the dealer or an experienced radio/TV technician for help.

### FCC Radiation Exposure Statement:

This equipment complies with FCC radiation exposure limits set forth for an uncontrolled environment. This equipment should be installed and operated with minimum distance 20cm between the radiator & your body. This transmitter must not be co-located or operating in conjunction with any other antenna or transmitter.