



QUICK START GUIDE

Motorized Pro Bullet Network Camera



User Manual



Smart Tools



All Software & files can be downloaded from
<http://www.milesight.com/support/download.asp>

Better Inside, More in Sight

Milesight Technology | www.milesight.com

IP VIDEO SURVEILLANCE

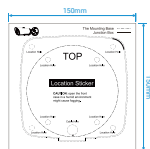


Table of Content

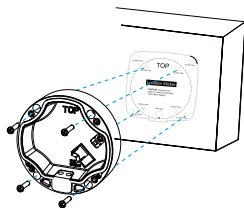
1. Quick Installation Steps.....	2
2. Hardware Overview.....	4
3. How to Connect to Alarm Interface.....	5
4. How to Connect the Water-proof Connector.....	5
5. Assigning an IP Address by Using Smart Tools.....	6
6. Assigning an IP Address via Browser.....	7
7. Accessing from the Web Brower.....	7

1. Quick Installation Steps

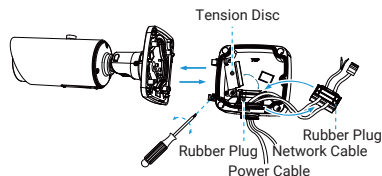
Step1: Fix a sticker on the position where the camera is intended to be installed;



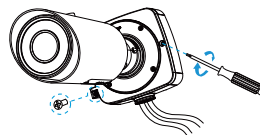
Step2: Remove the tension disc on the rear cover of the Junction Box (A62), and cut an opening on the rubber plug and get cables through the opening then fasten the rear cover to the ceiling or wall;



Step3: Install the front cover from the angle near 90° to the rear cover or hang the camera to the bracket;

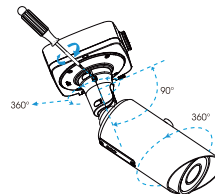


Step4: Adjust the cables length, and connect the cables to corresponding interfaces and fix the tension disc. Close the junction box and fix screws at last. Please remember to plug the small rubber plug whenever the holes on the rubber plug is not in use;



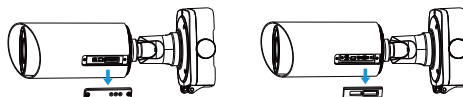
Remember to fix the setscrew tightly.

Step5: Adjust shooting direction and fix the setscrew.

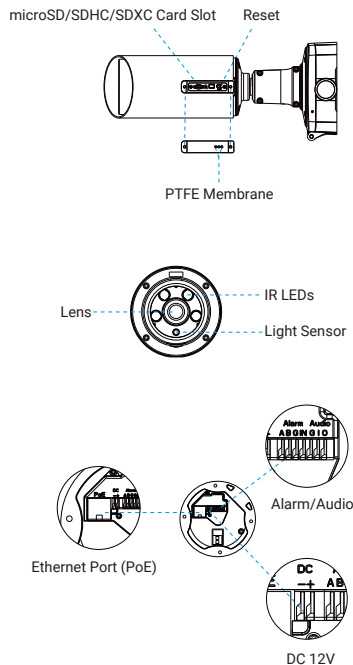


Note:

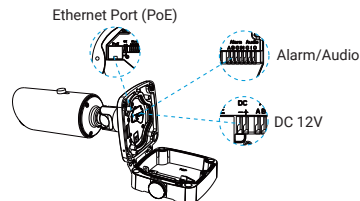
Loosen the screws of PTFE Membrane structure to get access to the SD card slot if you need. Fix the screws again after inserting the SD card to complete the operation.



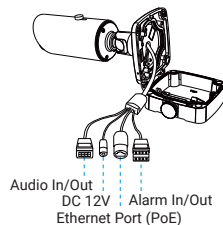
2. Hardware Overview



Version A



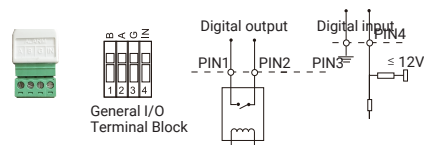
Version B



Note:

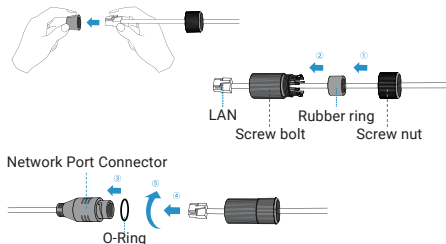
- 1) Reset Button: Press "Reset" button for 5 seconds, then the device will to factory default;
- 2) DC and PoE are available for Pro Bulletcamera's power supply.

3. How to Connect to Alarm Interface



PIN1: Alarm Output NC/NO 24V DC 1A
PIN2: Alarm Output NC/NO 24V DC 1A
PIN3: Alarm Input NC/NO $\leq 12V$
PIN4: Alarm Input NC/NO $\leq 12V$

4. How to Connect the Water-proof Connector



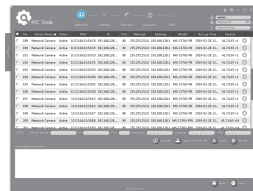
- Step1:** Get the network cable through the screw nut, rubber ring and the screw bolt;
Step2: Insert the rubber ring into the screw bolt;
Step3: Connect the screw nut to the screw bolt;
Step4: Place the O-Ring on the network port connector;
Step5: Connect the RJ45 to the network port connector, tighten the screw bolt and the connector.

Note:

Please tightly wrapped all cable-out interface with adhesive tape at last to prevent them from water.

5. Assigning an IP Address by Using Smart Tools

Smart Tools is a software tool which can automatically detect multiple online Milesight network cameras in the LAN, set IP addresses, and manage firmware upgrades. It's recommended to use when assigning IP addresses for multiple cameras.



The steps to change the IP of cameras are as below:

- 1) Start Smart Tools, click the IPC Tools page, then enter the device information, such as IP address, MAC address, Port number, Netmask, and Gateway, then all related Milesight network cameras in the same network that will be shown.
- 2) Select a camera or multiple cameras according to the MAC addresses.
- 3) Click "Activate" to set the password when using the cameras for the first time (Password must be 8 to 32 characters long, contain at least one number and one letter), and set three security questions (If you forget the password, you can reset the password by answering three security questions correctly).
- 4) Type the user name and password you set, change the IP address or other network values, and then click "Modify" button.
- 5) By double clicking the selected camera or the browser of interested camera, you can access the camera via web browser directly.

More usage of Smart Tools, please refer to the "Smart Tools User Manual".

6. Assigning an IP Address via Browser

If the network segment of the computer and that of the camera are different, please add some 192.168.5.xx(255.255.255.0) for your PC to get access to your cameras, more details can be found on "Milesight Network Camera Quick Start".

7. Accessing from the Web Browser

The camera can be used with the most standard operating systems and browsers. The recommended browsers are Internet Explorer, Firefox, Chrome, Safari. More information about the plugin installation, please refer to the troubleshooting:

5. Milesight-Troubleshooting-Plugin Installation on Windows-IPC
6. Milesight-Troubleshooting-Plugin Installation on MAC

Motorized Pro Bullet

Thank you
for choosing
Milesight Product

Milesight Technology