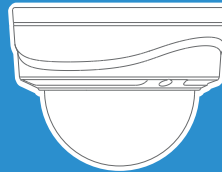




# QUICK START GUIDE

Milesight AI (Motorized) TrueColor Dome  
Network Camera



User Manual



Smart Tools

**Milesight** | *Make Sensing Matter*

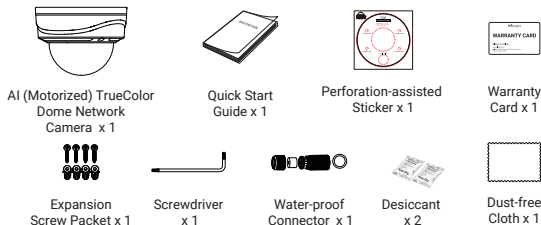
📄 Milesight IoT Co., Ltd. 🌐 [www.milesight.com/security](http://www.milesight.com/security)

---

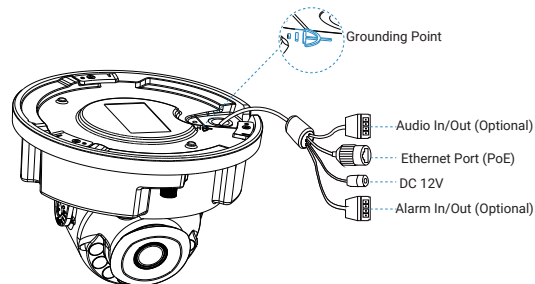
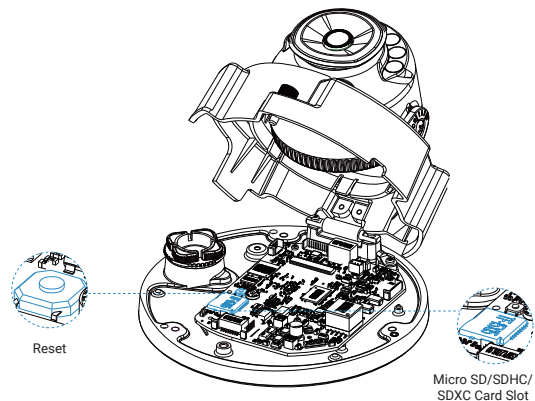
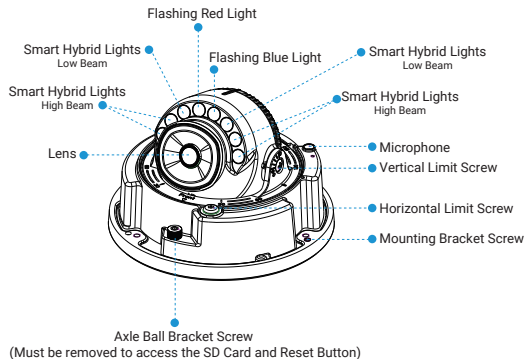
## Table of Content

1. Package Contents.....	2
2. Hardware Overview.....	2
3. Dimensions.....	3
4. Installation.....	4
5. How to Connect to Alarm Interface.....	10
6. How to Connect the Water-proof Connector.....	10
7. Assigning an IP Address by Using Smart Tools.....	11
8. Assigning an IP Address via Browser.....	12
9. Accessing from the Web Browser.....	12
10. FCC Statement .....	13

## 1. Package Contents

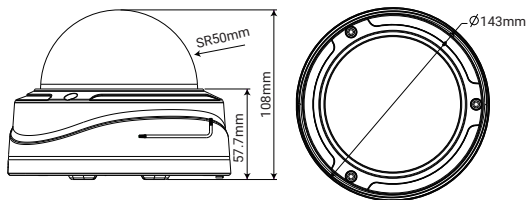


## 2. Hardware Overview



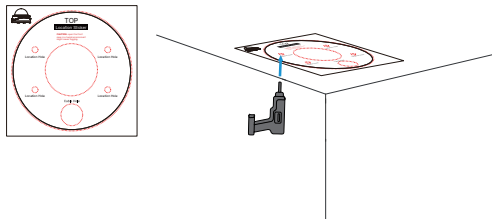
### 3. Dimensions

#### AI (Motorized) TrueColor Dome Network Camera



### 4. Installation

**Step1:** First, fix the perforation-assisted sticker at the intended camera installation position. Then punch holes as indicated on the sticker.

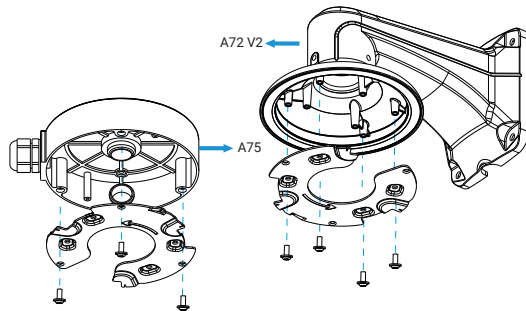
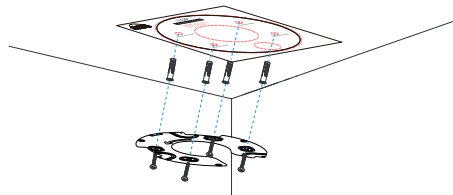


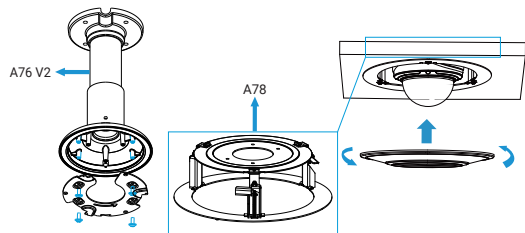
Loosen the screws of the dome cover and remove it.

Loosen the setscrew and detach the mounting bracket.

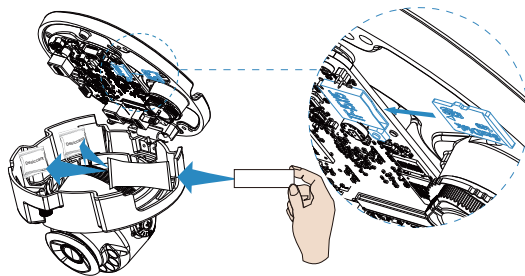
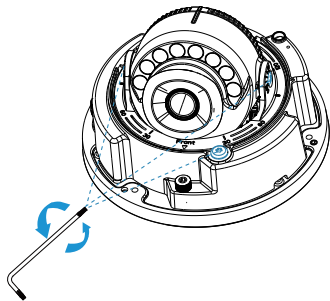
**Step2:** Secure the mounting bracket at the marked installation position designated for the camera.

Pendant Mount (A76 V2), Wall Mount (A72 V2), Junction Box (A75), and Recessed Mount (A78) are available for installation.



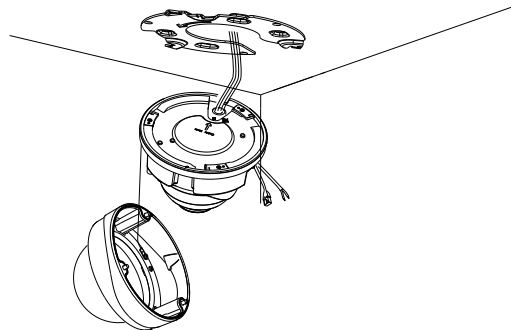
**Note:**

- ① Before installation, please place desiccant inside the camera. Loosen the screws, then securely attach two desiccant packs to the inner wall using double-sided adhesive tape. The desiccant placement is for reference only, you may position it as convenient.
- ② To insert the SD card, open the camera housing and place it in the slot as needed.
- ③ Reset button: After powering up the device, press the "Reset" button for 5 seconds to restore the device to factory default.

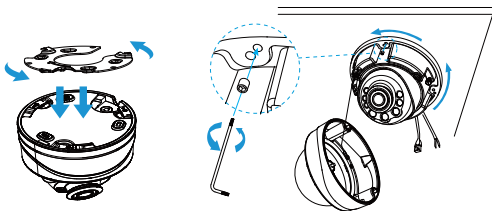


**Tips:** Replace the desiccant bag inside the top cover.

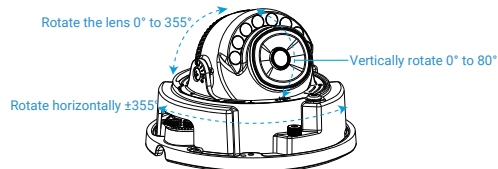
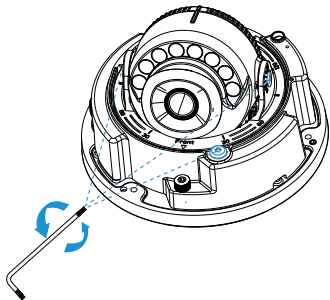
**Step3:** Pass the cables through the designated Cable Hole indicate on the perforation-assisted sticker.



**Step4:** Rotate the camera unit clockwise, and then fix the camera to the bracket with the setscrew.



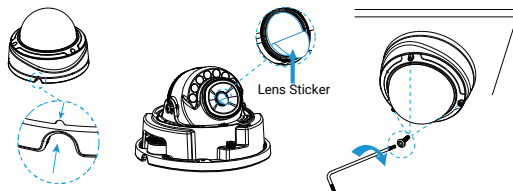
**Step5:** To power the camera, use either the Ethernet port (PoE) or the DC 12V power supply port. Next, loosen limit screws to adjust the camera to the desired direction. Once you finish the adjustment, tighten the clamp screw to secure the lens in place. The camera allows for a horizontal pan of  $\pm 355^\circ$  by rotating the lens, a swivel adjustment from  $0^\circ$  to  $355^\circ$  by twisting the lens, and a vertical tilt range of  $0^\circ$  to  $90^\circ$  for flexible installation and precise monitoring.



**Step6:** Attach the dome cover and make sure that the groove above is aligned to the one below as the picture shows, then fix the camera tightly.

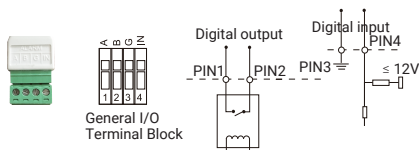
**Note:**

- ① Before attaching the dome cover, ensure that you remove the lens sticker. Then, clean the lens with a dust-free cloth.
- ② The groove on the top aligns with the setscrew on the bottom



**Step7:** Finish the installation.

## 5. How to Connect to Alarm Interface



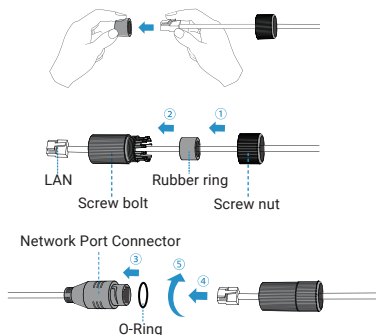
**PIN1:** Alarm Output NC/NO 24V DC 1A

**PIN2:** Alarm Output NC/NO 24V DC 1A

**PIN3:** Alarm Input NC/NO  $\leq 12V$

**PIN4:** Alarm Input NC/NO  $\leq 12V$

## 6. How to Connect the Water-proof Connector



**Step1:** Get the network cable through the screw nut, rubber ring and the screw bolt.

**Step2:** Insert the rubber ring into the screw bolt.

**Step3:** Connect the screw nut to the screw bolt.

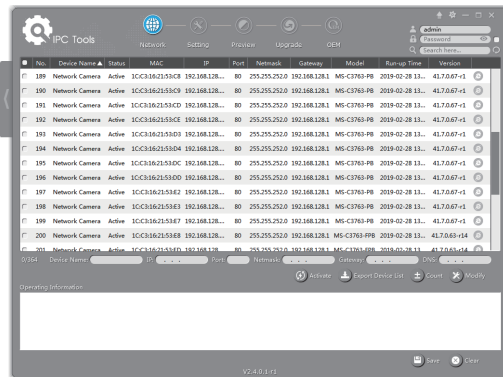
**Step4:** Place the O-Ring on the network port connector.

**Step5:** Connect the RJ45 to the network port connector, tighten the screw bolt and the connector.

**Note:** Please tightly wrapped all cable-out interface with adhesive tape at last to prevent them from water.

## 7. Assigning an IP Address by Using Smart Tools

Smart Tools is a software tool which can automatically detect multiple online Milesight network cameras in the LAN, set IP addresses, and manage firmware upgrades. It's recommended to use when assigning IP addresses for multiple cameras.



The steps to change the IP of cameras are as below:

- 1) Start Smart Tools, click the IPC Tools page, then enter the device information, such as IP address, MAC address, Port number, Netmask, and Gateway, then all related Milesight network cameras in the same network that will be shown.
- 2) Select a camera or multiple cameras according to the MAC addresses.
- 3) Click "Activate" to set the password when using the cameras for the first time (Password must be 8 to 32 characters long, contain at least one number and one letter), and set three security questions (If you forget the password, you can reset the password by answering three security questions correctly).
- 4) Type the user name and password you set, change the IP address or other network values, and then click "Modify" button.
- 5) By double clicking the selected camera or the browser of interested camera, you can access the camera via web browser directly.

More usage of Smart Tools, please refer to the "**Smart Tools User Manual**".

## 8. Assigning an IP Address via Browser

If the network segment of the computer and that of the camera are different, please add some 192.168.5.xx(255.255.255.0) for your PC to get access to your cameras, more details can be found on "**Milesight Network Camera Quick Start**".

## 9. Accessing from the Web Browser

The camera can be used with the most standard operating systems and browsers. The recommended browsers are Internet Explorer, Firefox, Chrome, Safari. More information about the plugin installation, please refer to the troubleshooting:

**5. Milesight-Troubleshooting-Plugin Installation on Windows-IPC**

**6. Milesight-Troubleshooting-Plugin Installation on MAC**

## 10. FCC Statement

Any changes or modifications not expressly approved by the party responsible for compliance could void the user's authority to operate the equipment. This device complies with part 15 of the FCC Rules. Operation is subject to the following two conditions:

1. This device may not cause harmful interference.
2. This device must accept any interference received, including interference that may cause undesired operation.

**Note:** This equipment has been tested and found to comply with the limits for a Class B digital device, pursuant to part 15 of the FCC Rules. These limits are designed to provide reasonable protection against harmful interference in a residential installation. This equipment generates, uses and can radiate radio frequency energy and, if not installed and used in accordance with the instructions, may cause harmful interference to radio communications. However, there is no guarantee that interference will not occur in a particular installation. If this equipment does cause harmful interference to radio or television reception, which can be determined by turning the equipment off and on, the user is encouraged to try to correct the interference by one or more of the following measures:

1. Reorient or relocate the receiving antenna.
2. Increase the separation between the equipment and the receiver.
3. Connect the equipment into an outlet on a circuit different from that to which the receiver is connected.
4. Consult the dealer or an experienced radio/TV technician for help.

### FCC Radiation Exposure Statement:

This equipment complies with FCC radiation exposure limits set forth for an uncontrolled environment. This equipment should be installed and operated with a minimum distance of 20cm between the radiator& your body. This transmitter must not be co-located or operating in conjunction with any other antenna or transmitter.