



QUICK START GUIDE

Mini Bullet Network Camera Series



User Manual



Smart Tools



All Software & files can be downloaded from
<http://www.milesight.com/support/download.asp>

Better Inside, More in Sight

Milesight Technology | www.milesight.com



IP VIDEO SURVEILLANCE

Table of Content

1. Quick Installation Steps.....	2
2. Hardware Overview.....	7
3. How to Connect the Water-proof Connector.....	10
4. Assigning an IP Address by Using Smart Tools.....	10
5. Assigning an IP Address via Browser.....	11
6. Accessing from the Web Brower.....	11

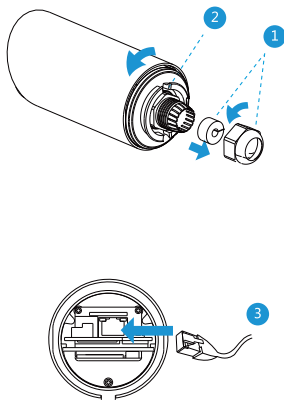
1. Quick Installation Steps

Weather-proof Mini Bullet Network Camera/ Motorized Bullet Network Camera

Step1: Loosen the waterproof connector, and then remove the rubber seal and the waterproof connector;

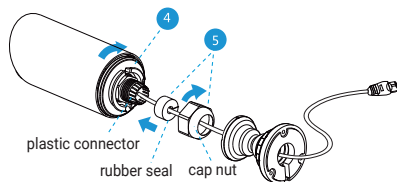
Step2: Loosen and open the rear cover, then install a microSD/SDHC/SDXC card;

Step3: Pass the Ethernet cable (or the tail wire of Mini Bullet with Multi-interface Version) through the center of the mount bracket, cap nut, rubber seal and rear cover orderly for connection;

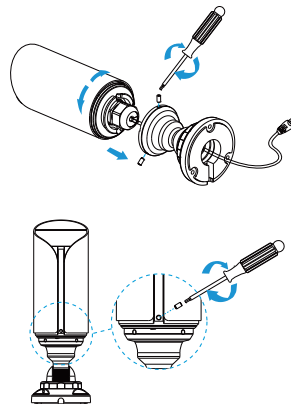


Step4: Install and tighten the rear cover;

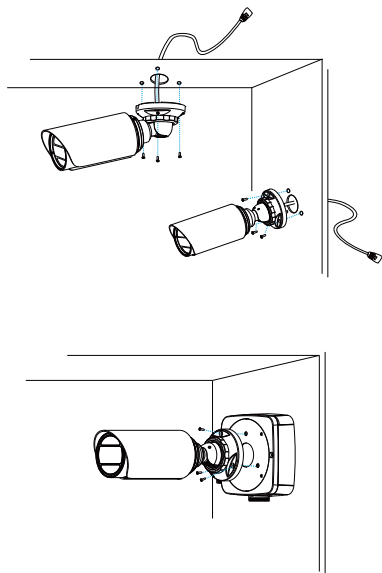
Step5: Tighten the plastic connector, rubber seal, and cap nut of the waterproof connector;



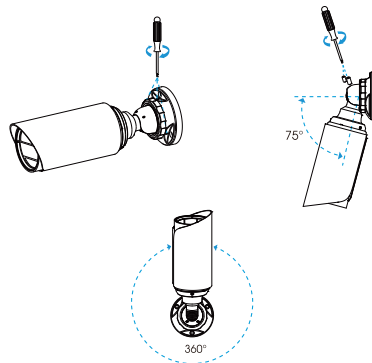
Step6: Put the bracket and camera together, rotate the bracket and fasten it using screws;



Step7: Mount Camera to ceiling, wall or Junction Box(A63);

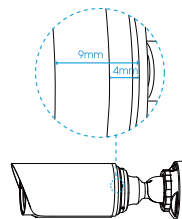


Step8: Adjust shooting direction and fix setscrew.



Note:

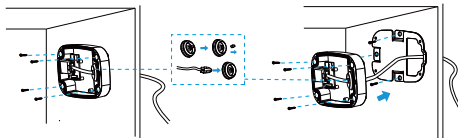
- 1) The upper cover of the Motorized Mini Bullet Network Camera could only be moved forward for 5mm at most to ensure better field of view.
- 2) It will be much easier to remove the rubber seal with a screwdriver when tearing down the camera.



Vandal-proof Mini Bullet Network Camera/ AI Color[®] Vandal-proof Mini Bullet Network Camera

Step1: Connect the cables to the corresponding interface on the rear cover of the Junction Box. Then fix the rear cover on the position where it is intended to be installed. The rear cover can be fixed in the following two ways:

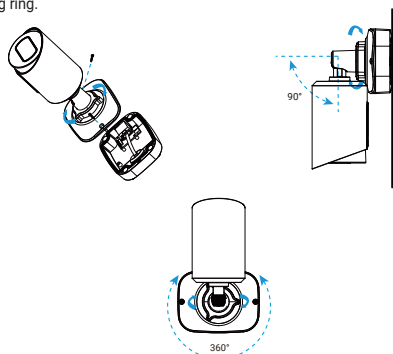
- 1) Fix the rear cover directly;
- 2) Fix the rear cover via a bracket;



Note:

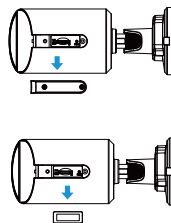
The bracket is optional, which can be applied in special scenarios that require screws of larger sizes.

Step2: When the front cover is correctly fixed to the rear cover, the camera will be powered on by contact power supply. Adjust shooting direction and rotate locking ring.



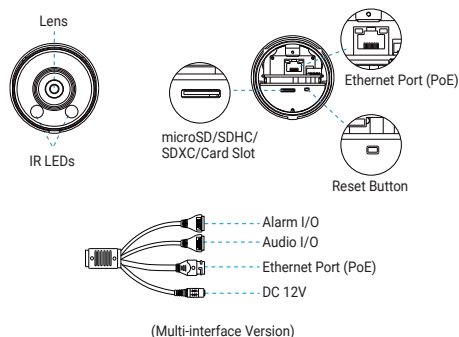
Note:

Loosen the screws of SD Card structure to get access to the SD card slot if you need. Fix the screws again after inserting the SD card to complete the operation.



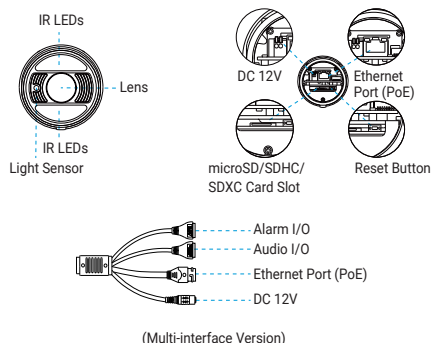
2. Hardware Overview

Weather-proof Mini Bullet Network Camera

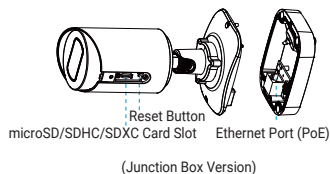
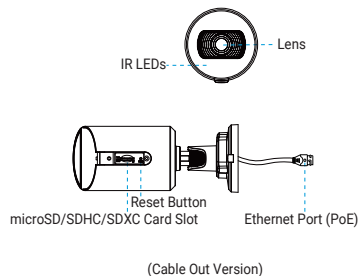


(Multi-interface Version)

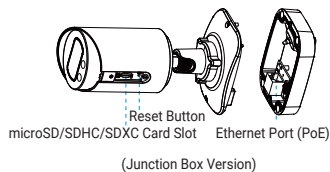
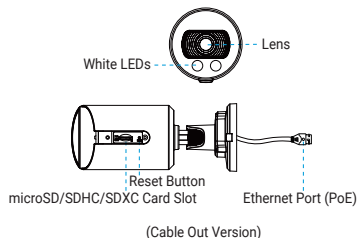
Motorized Bullet Network Camera



Vandal-proof Mini Bullet Network Camera



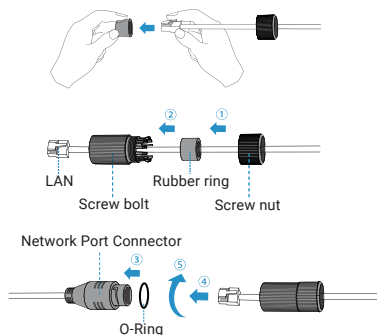
AI Color Vandal-proof Mini Bullet Network Camera



Note:

Reset Button: Press "Reset" button for 5 seconds, then the device will be restored to factory default;

3. How to Connect the Water-proof Connector



Step1: Get the network cable through the screw nut, rubber ring and the screw bolt;

Step2: Insert the rubber ring into the screw bolt;

Step3: Connect the screw nut to the screw bolt;

Step4: Place the O-Ring on the network port connector;

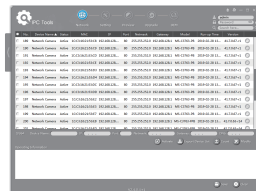
Step5: Connect the RJ45 to the network port connector, tighten the screw bolt and the connector.

Note:

Please tightly wrapped all cable-out interface with adhesive tape at last to prevent them from water.

4. Assigning an IP Address by Using Smart Tools

Smart Tools is a software tool which can automatically detect multiple online Milesight network cameras in the LAN, set IP addresses, and manage firmware upgrades. It's recommended to use when assigning IP addresses for multiple cameras.



The steps to change the IP of cameras are as below:

1) Start Smart Tools, click the IPC Tools page, then enter the device information, such as IP address, MAC address, Port number, Netmask, and Gateway, then all related Milesight network cameras in the same network that will be shown.

2) Select a camera or multiple cameras according to the MAC addresses.

3) Click "Activate" to set the password when using the cameras for the first time (Password must be 8 to 32 characters long, contain at least one number and one letter), and set three security questions (If you forget the password, you can reset the password by answering three security questions correctly).

4) Type the user name and password you set, change the IP address or other network values, and then click "Modify" button.

5) By double clicking the selected camera or the browser of interested camera, you can access the camera via web browser directly.

More usage of Smart Tools, please refer to the "Smart Tools User Manual".

5. Assigning an IP Address via Browser

If the network segment of the computer and that of the camera are different, please add some 192.168.5.xx(255.255.255.0) for your PC to get access to your cameras, more details can be found on "Milesight Network Camera Quick Start".

6. Accessing from the Web Browser

The camera can be used with the most standard operating systems and browsers. The recommended browsers are Internet Explorer, Firefox, Chrome, Safari. More information about the plugin installation, please refer to the troubleshooting:

5. Milesight-Troubleshooting-Plugin Installation on Windows-IPC

6. Milesight-Troubleshooting-Plugin Installation on MAC

Mini Bullet

Thank you
for choosing
Milesight Product

Milesight Technology