



Milesight OpenVision Server Mini

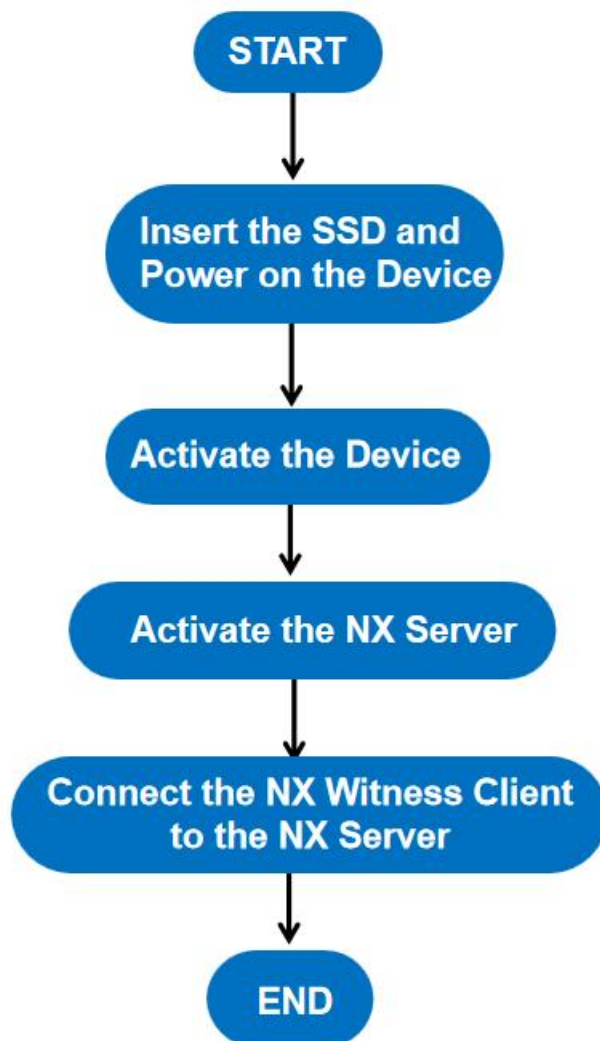
How to set up Milesight OpenVision Server Mini

Date: 30th, October, 2025

Chapter 1. Configuration Flow	3
Chapter 2. Configuration Steps	4
2.1 Power on the Device	4
2.2 Activate the Device	4
2.3 Activate the NX Server	5
2.4 Connect to the NX Server	8
Chapter 3. Services	12

Chapter 1. Configuration Flow

This section describes how to quickly get started and use Milesight OpenVision Server Mini. Below is a brief operational procedure, for detailed instructions please refer to the detailed descriptions below.



Chapter 2. Configuration Steps

2.1 Insert the SSD and Power on the Device

Please first insert SSD(s) into the device, then power on the device by inserting the PoE cable.

Note: Up to 2 SSDs can be installed.

2.2 Activate the Device

The OpenVision Server Mini must be assigned an IP address to be accessible. The default IP address of Milesight OpenVision Server Mini is 192.168.5.190. You can change the IP address of it via Smart Tools. The major steps are as follows:

Step1: Install Smart Tools on a computer (The software could be downloaded from our website: [Milesight Software & Platform](#)).

Step2: Start Smart Tools, click the IPC Tools page, then find the device according to its default IP address. If there are multiple devices on the local network, search for the device based on its MAC address.

Step3: Select the device and click "Activate" to set the password when using it for the first time. You can also set the security questions when activating the device in case that you forget the password (You can reset the password by answering three security questions correctly). Click "Save" and it will show that the activation was successful.

Activation

User Name: admin

Password: [masked]

Confirm: [masked]

☐ Remember Password?

☒ Set the Security Question

Security Question 1: [What's your father's name?]

Security Answer 1: []

Security Question 2: [What's your father's name?]

Security Answer 2: []

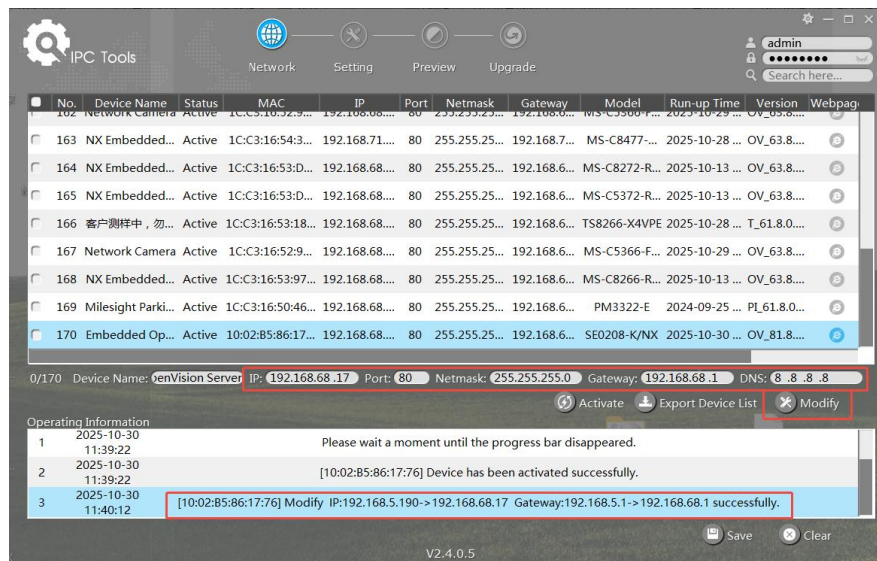
Security Question 3: [What's your father's name?]

Security Answer 3: []

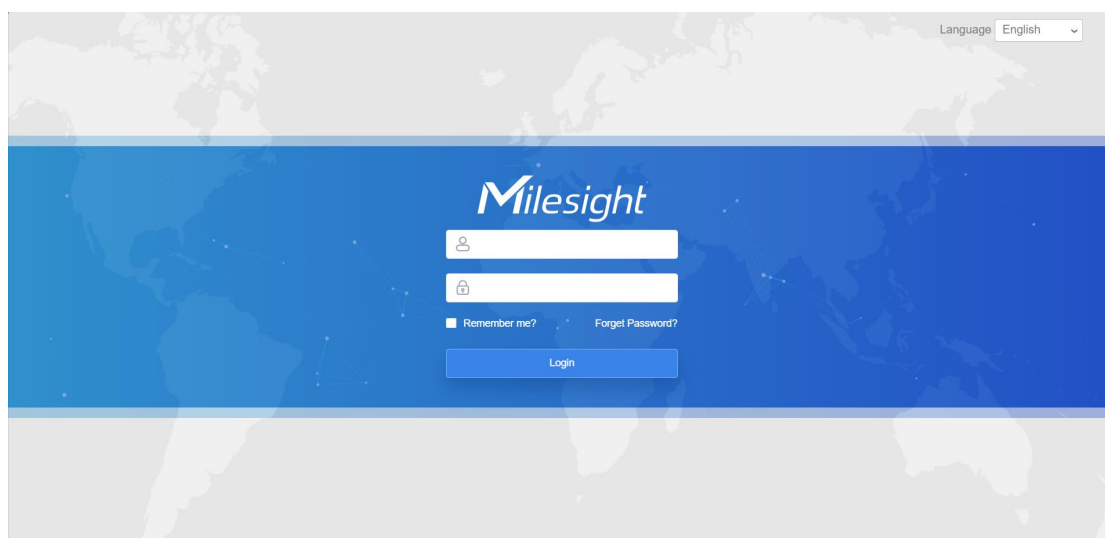
☒ Save

Step4: After activation, you can change the IP address or other network values, and then

click “Modify” button. The operation information will show that the modification was successful.



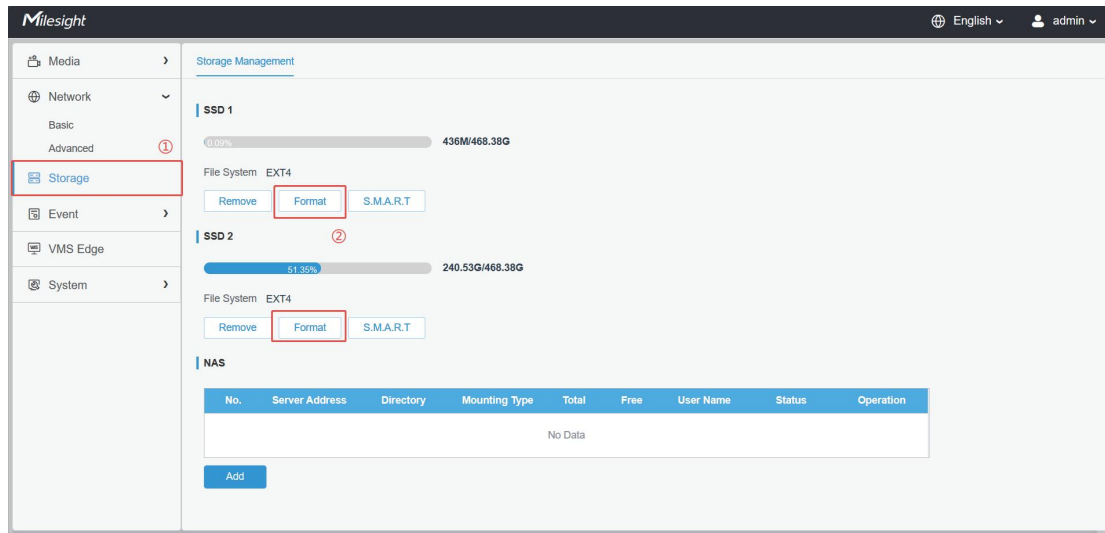
Step5: By double clicking the selected device, you can access the device via web browser directly. The Internet Explorer window will pop up.



2.3 Activate the NX Server

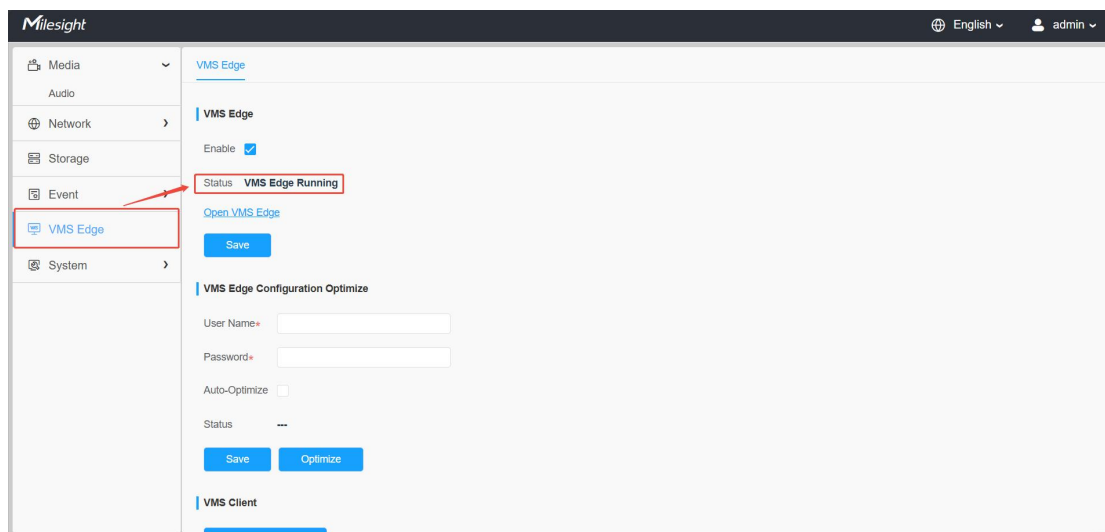
Step1: Log in to the device's web browser using the username and password set during activation.

Step2: Click the “Storage” section to format the SSD.

**Note:**

- To ensure proper access, please always format the SSD via the Web interface.
- Never format the SSD from the Ubuntu desktop using the "system" user account!

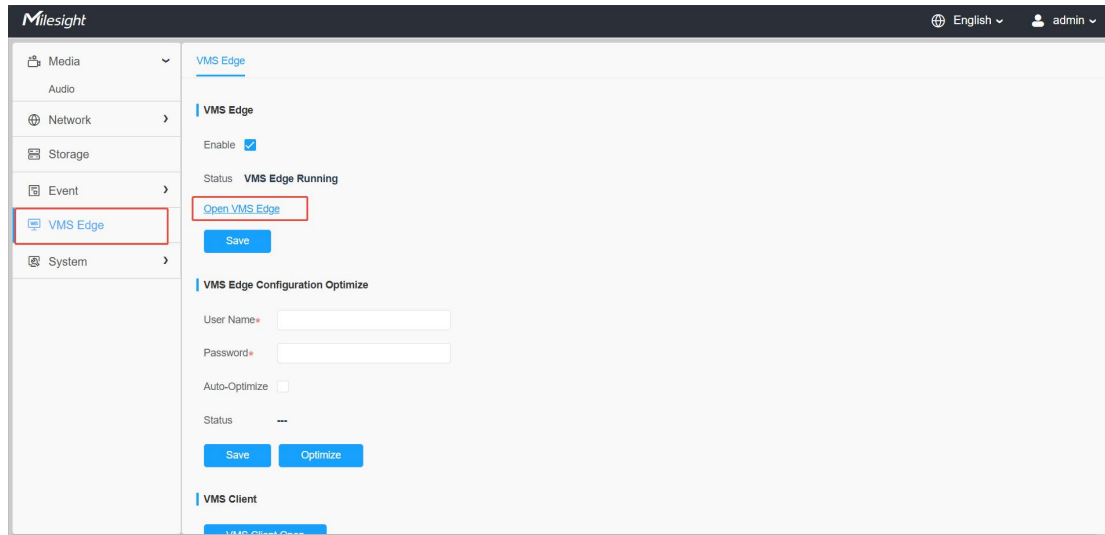
Step3: Click the "VMS Edge" section to verify whether the status shows "VMS Edge Running".

**Note:**

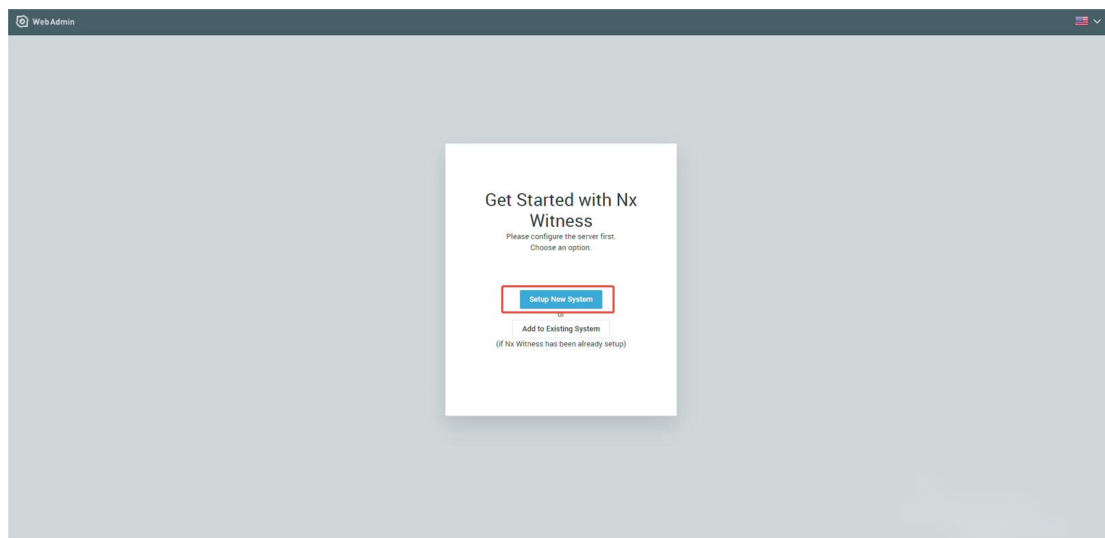
If the SSD is not formatted or not inserted, the status here will be "Stopped". Once the SSD is installed and formatted properly, the VMS Edge status will change to "VMS Edge Running".

Step4:

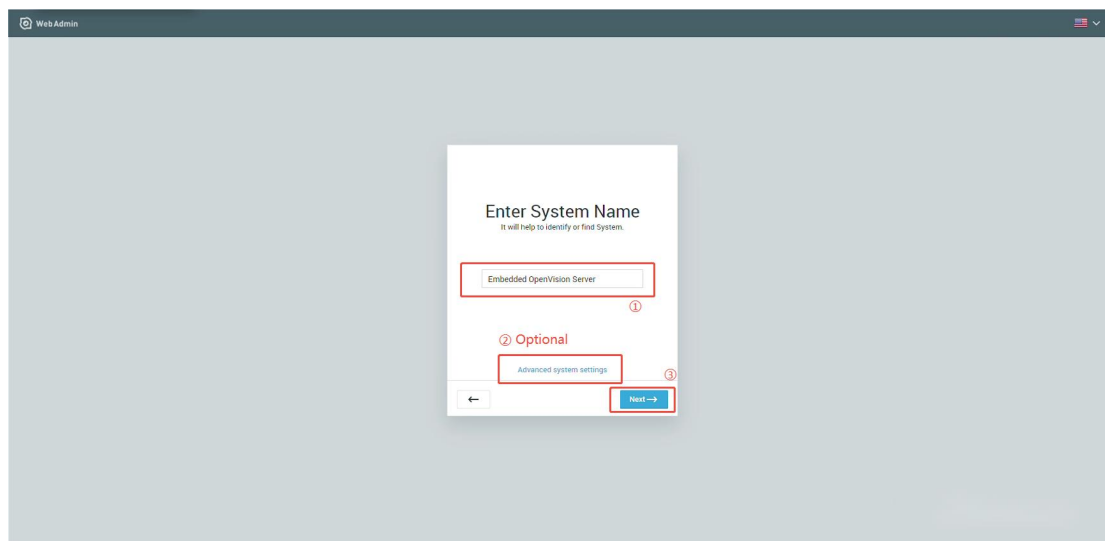
Click "Open VMS Edge" on the VMS Edge section to access the NX Server's Web browser.



Step5: Create a new system (for the first time setup).

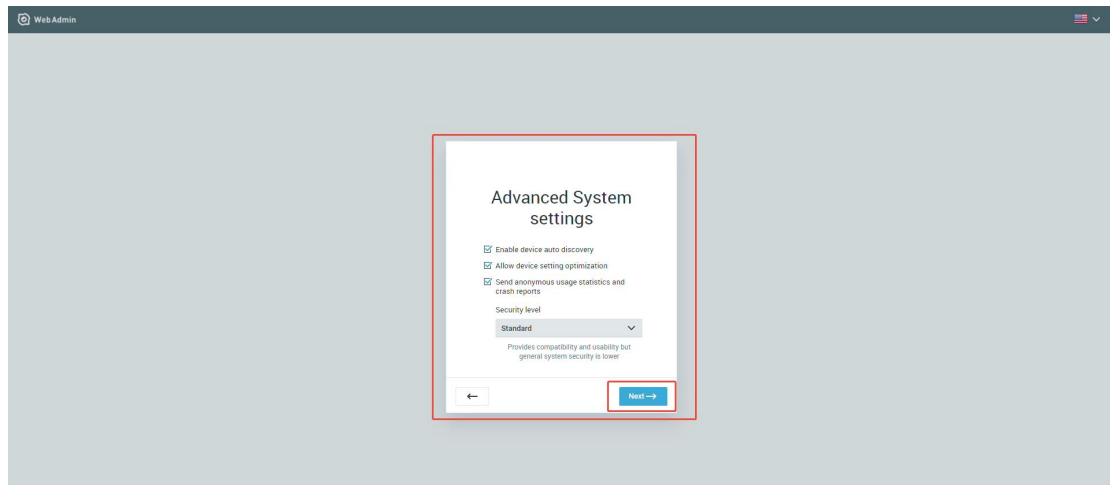


Step6: Assign a name to the newly created Server.



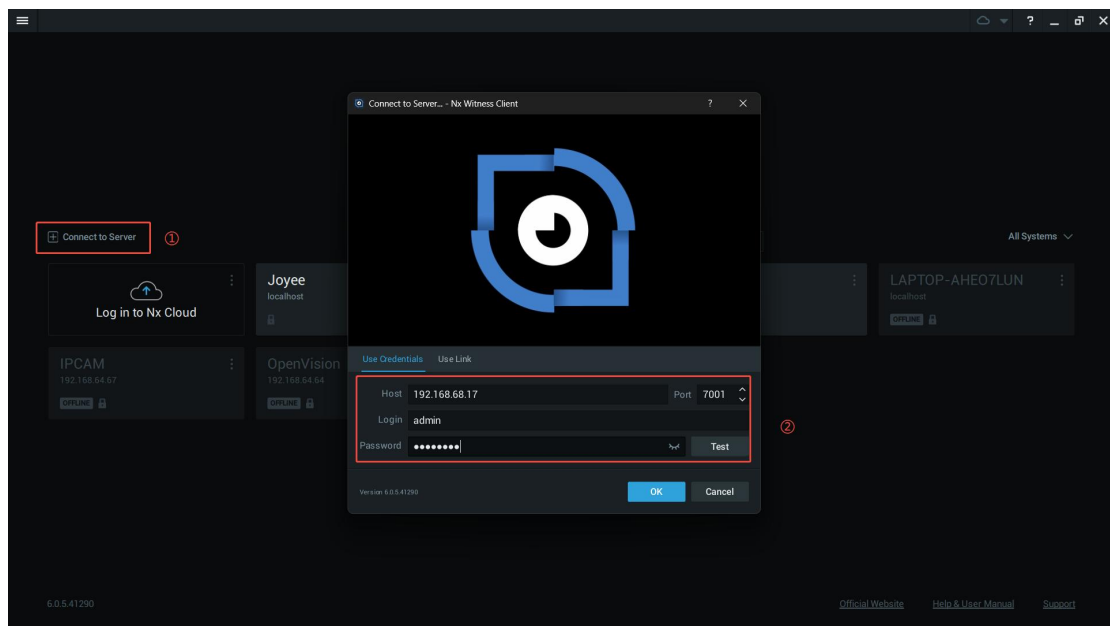
You can also configure some advanced settings, such as enabling device auto discovery, allowing device setting optimization, sending anonymous usage statistics and crash

reports, and setting the security level to Standard or High. Then click “Next” to finish the activation.

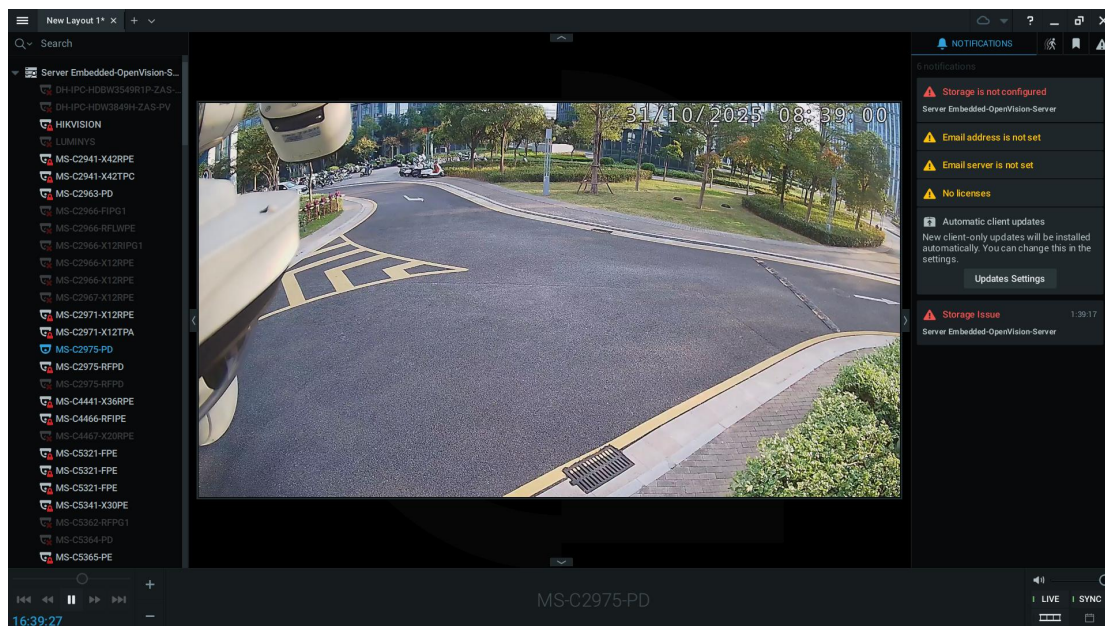


2.4 Connect to the NX Server

Method 1: Open the NX Witness Client on your computer and log in using the device's current IP address to connect to the server.



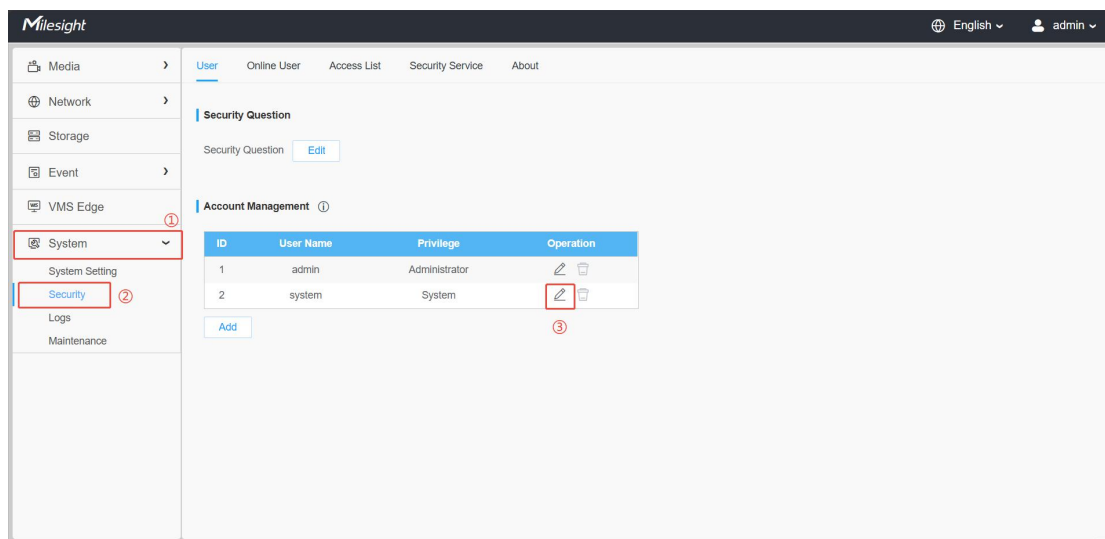
Once the NX Server is successfully connected to NX Witness Client, the following interface will appear as shown below. Users can then continue with further operations on the NX Witness Client.

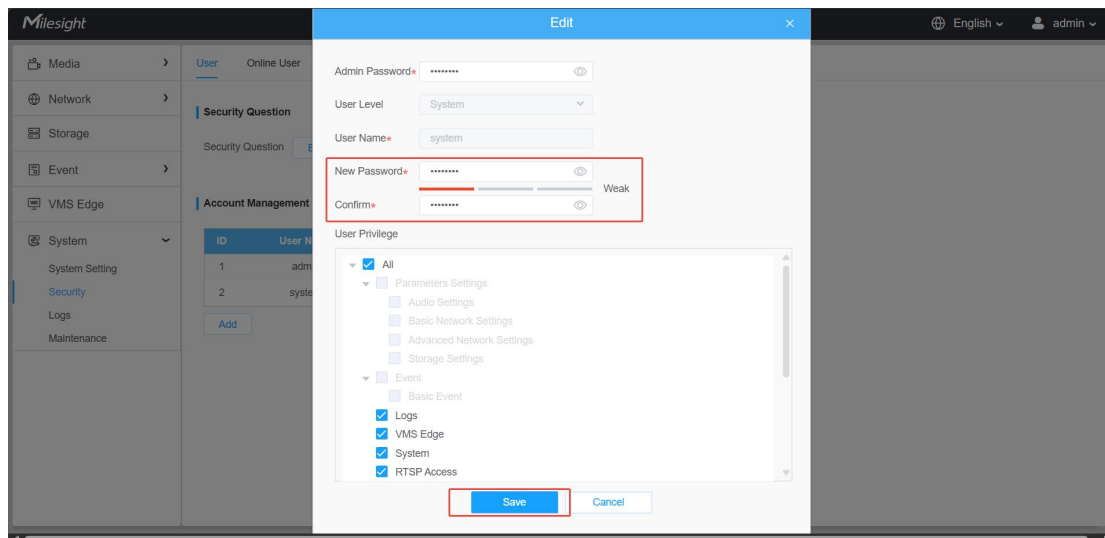


Method 2: Users may also access the NX Witness Client directly from the device's web browser to connect to the NX Server. The steps are as follows:

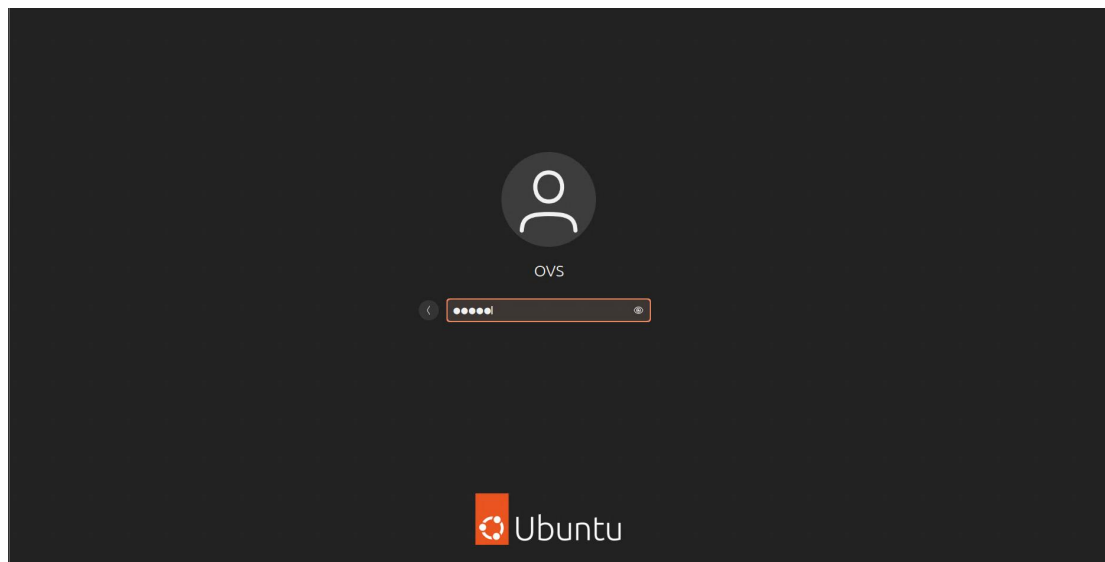
Step1: Click **System** → **Security** → **Edit** to modify the default password of the system account, and then save the edition.

Note: The default password for the system user is "admin," which is also the Ubuntu system login password. Users must set a new password before the "VMS Client" can be enabled.



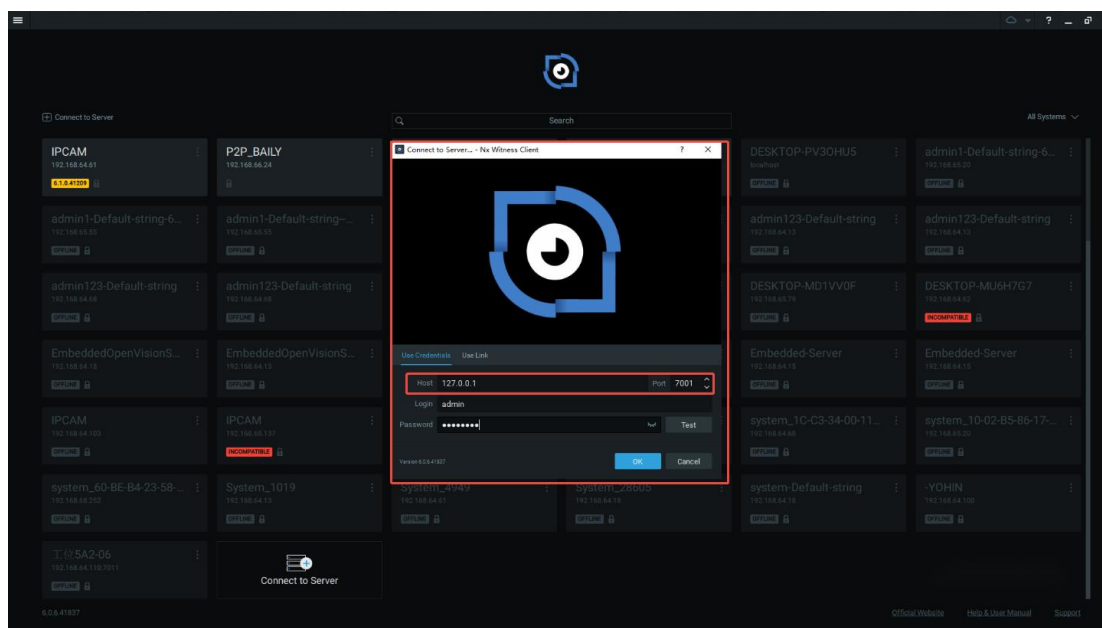
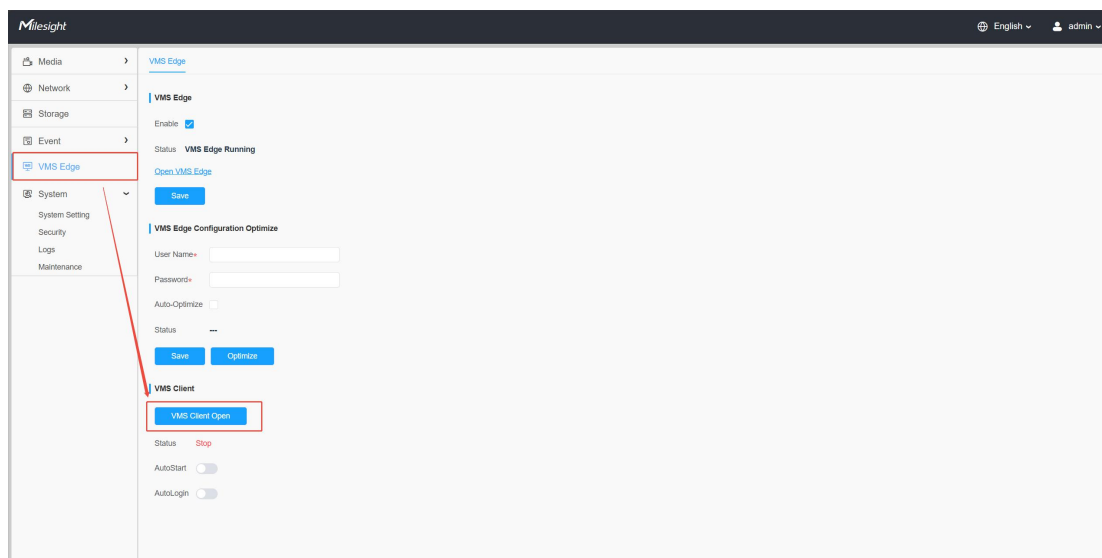


Step2: Connect a display to the device using HDMI. Then, log in to the Ubuntu system using the new password.



Step3: Click “VMS Client Open” on the web browser to open the NX Witness Client and connect to the server using the default IP address (127.0.0.1:7001) or the IP address you set during activation to complete the creation and connection of the server.

Note: Using 127.0.0.1:7001 to log in allows you to continue accessing the server even if its IP address is changed later.



Chapter 3. Services

Milesight provides customers with timely and comprehensive technical support services. End-users can contact your local dealer to obtain technical support. Distributors and resellers can contact directly with Milesight for technical support.

Technical Support Mailbox: support@milesight.com

Web: <https://www.milesight.com/security/>

MILESIGHT CHINA

TEL: +86-592-5922772

Add: Building C09, Software Park Phase III, Xiamen 361024, Fujian, China