



Milesight Release Note For Network AI Dual-sensor 180° Panoramic Network Camera

Firmware Version: 48.8.0.4-r3

Applicable Model: MS-C8477-PC

Release Date: 16th January, 2025

1. Overview

Milesight offers a variety of sensor products designed to capture meaningful data. By innovatively applying AI, 5G, and IoT technologies, Milesight brings significant impact to various applications. The company manufactures products with exceptional image quality, unparalleled flexibility, and reliability for the global market. Milesight is pleased to announce the release of the new firmware version 48.8.0.4-r3 for AI Dual-sensor 180° Panoramic Network Camera.

In this version, AI Dual-sensor 180° Panoramic Network Camera. has achieved seamless **compatibility with Nx Witness** through using Milesight's new plugin, providing a robust and efficient security solution.

Additionally, the **API interface and metadata format** have been perfected and standardized to achieve better compatibility with third-party systems.

Furthermore, fixed several known bugs.

2. Firmware Version Download

For the firmware version, please click the following link to download:

[Firmware Download|The Latest Innovation|Milesight](#)

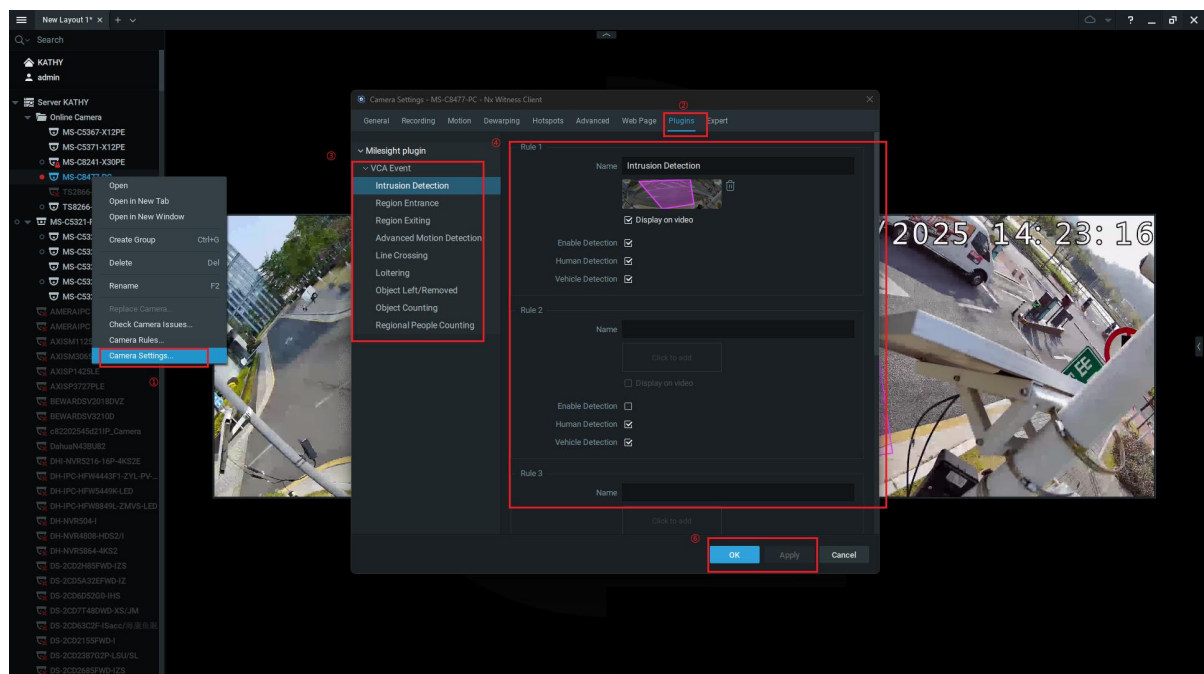
3. What's new

3.1 New Features

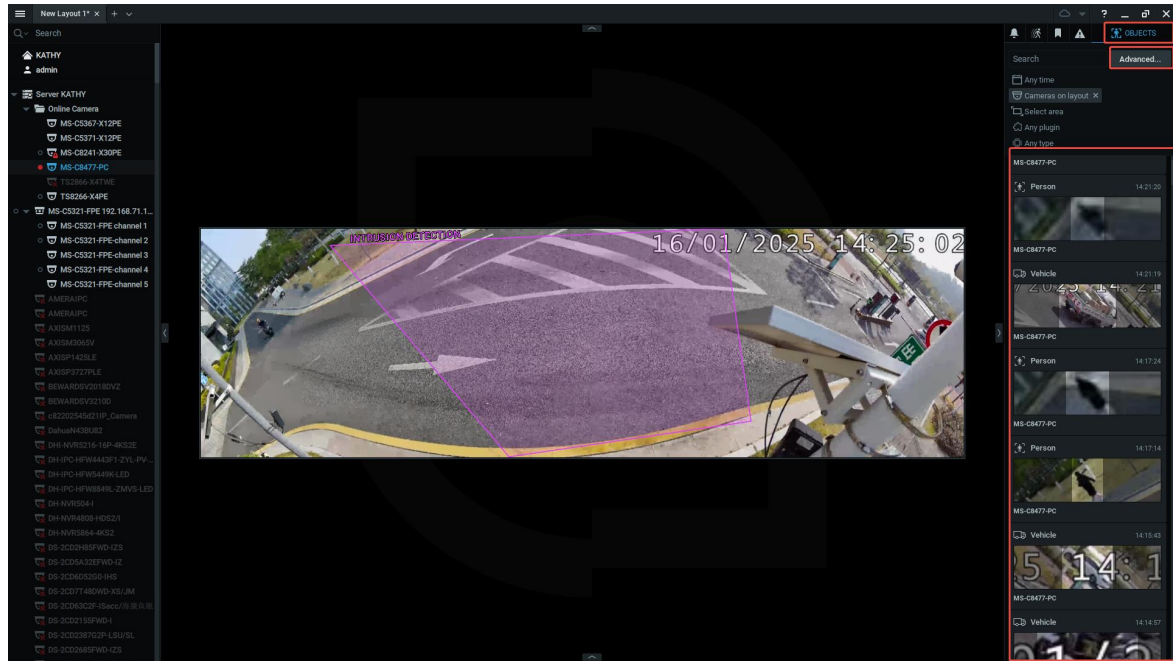
1) Compatibility with an extensive range of third-party systems.

- ① -Compatible with Nx Witness using the new Milesight plugin.
- ❖ This version achieves seamless compatibility with Nx Witness through Milesight's new plugin. It supports the event configurations and event alarm rules, enabling real-time viewing of target objects as well as advanced object search capabilities within Nx Witness. This integration provides a robust and efficient security solution.

②-Furthermore, the API interface and metadata format for AI Dual-sensor 180° Panoramic Network Camera have been perfected and standardized to achieve better compatibility with third-party systems. Additionally, Onvif compatibility has been optimized and enhanced, achieving a seamless integration with various Onvif systems.



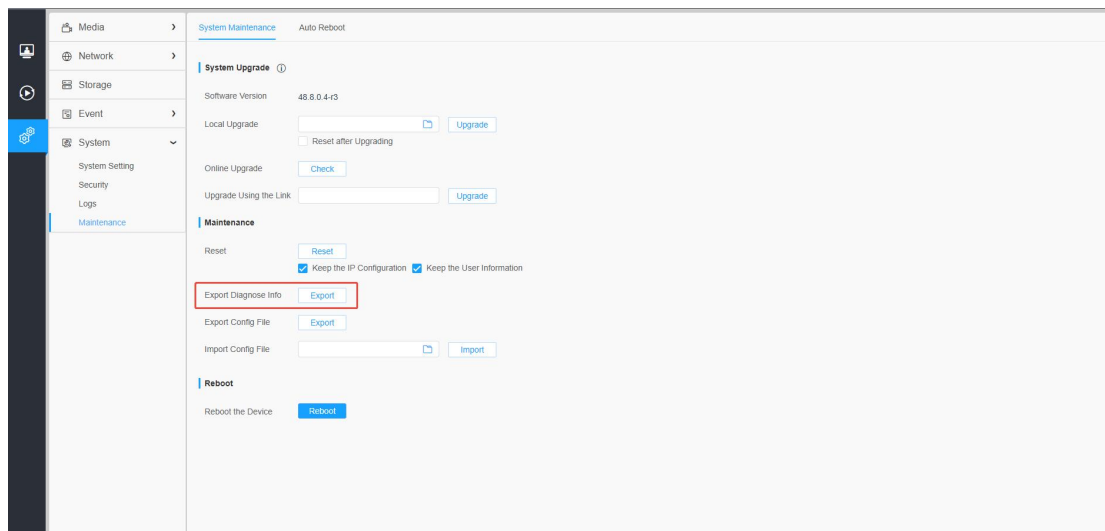
✧Configure event



✧ Preview target object

3.2 Optimizations

(1) Optimize the name rules of Export Diagnose Info function for OEM or neutral device.



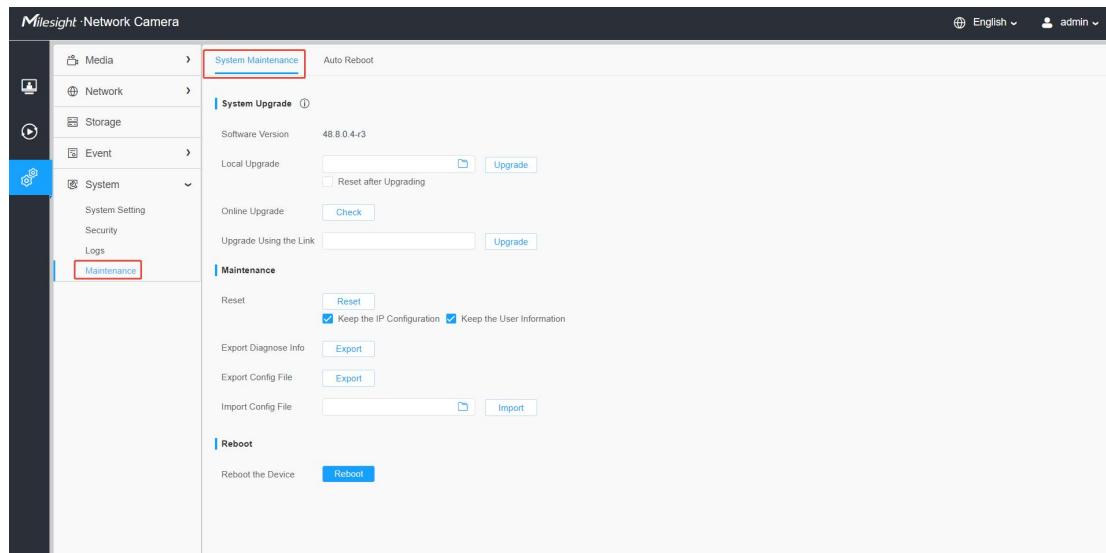
3.3 Bug Fixed

(1) Fixed known bugs.

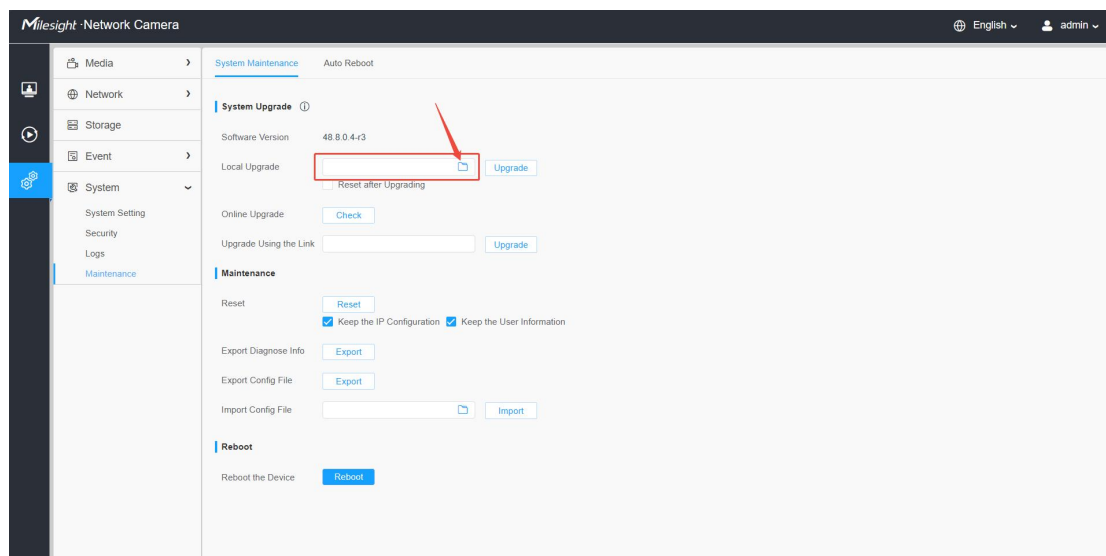
4. Upgrade steps

Please check each model with the right firmware version as mentioned above, then upgrade as the following steps:

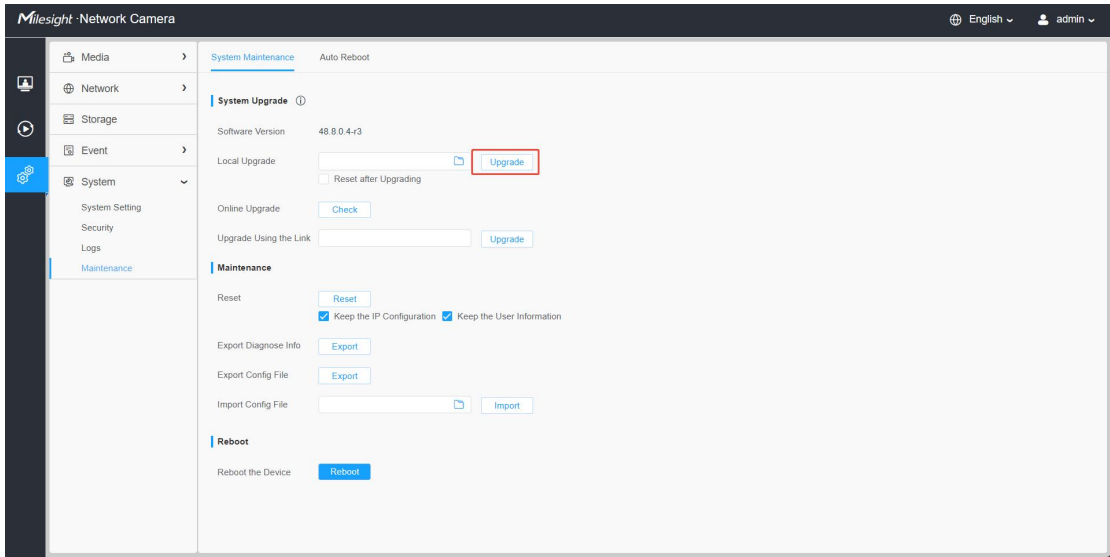
Step 1: Go to the web page of Network Camera, Settings -> System -> Maintenance -> System Maintenance.



Step 2: Choose file for the upgrade.



Step 3: Click the "Upgrade" button, then please wait about 1~3 minutes. The upgrade will be done after the system reboots successfully.



——END——