



# Milesight Release Note For Camera

Firmware Version: 61.8.0.3-r9

Applicable Model: MS-Cxxxx-xxE

Release Date: 21<sup>th</sup> September , 2023

# 1. Overview

Milesight, the best-in-class AIoT surveillance solution provider who manufactures products with superior image quality, exceptional flexibility and reliability for the global market, is pleased to announce the release of the new firmware version 61.8.0.3-r9 of the Milesight Network Camera.

One notable addition to this update is introducing a new VCA feature called **Intrusion Detection**, which enhances security coverage by providing more comprehensive protection for security scenarios. Moreover, added **SD card encryption**.

In this version, optimizations have been made to enhance the user experience. For example, **AI Application Options** have been added to Events to facilitate customer selection, and people counting and vehicle counting have been merged into **Object Counting**.

## 2. What's new

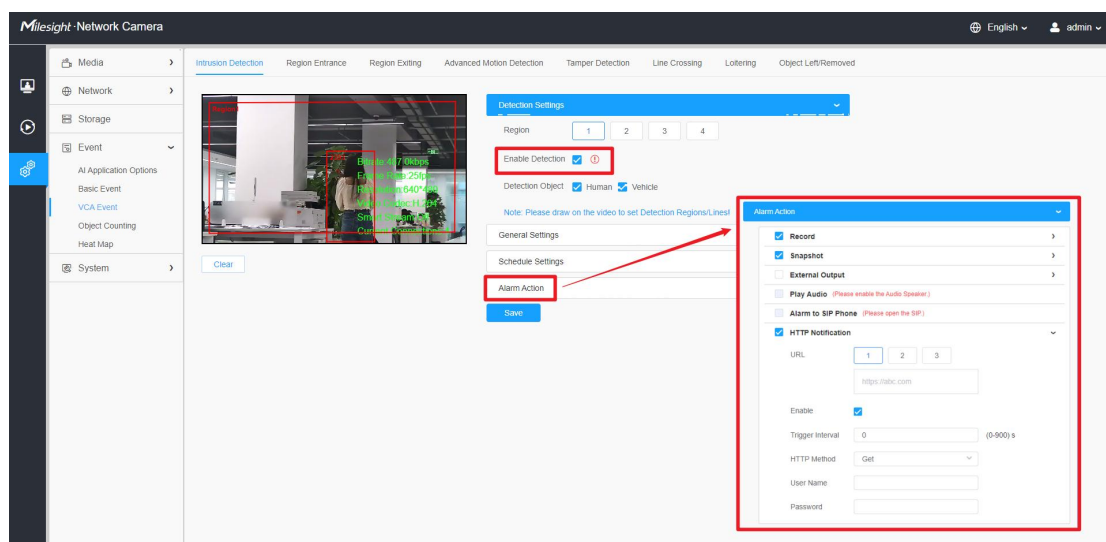
### 2.1 New Features

- 1) Add new VCA function: **Intrusion Detection**.

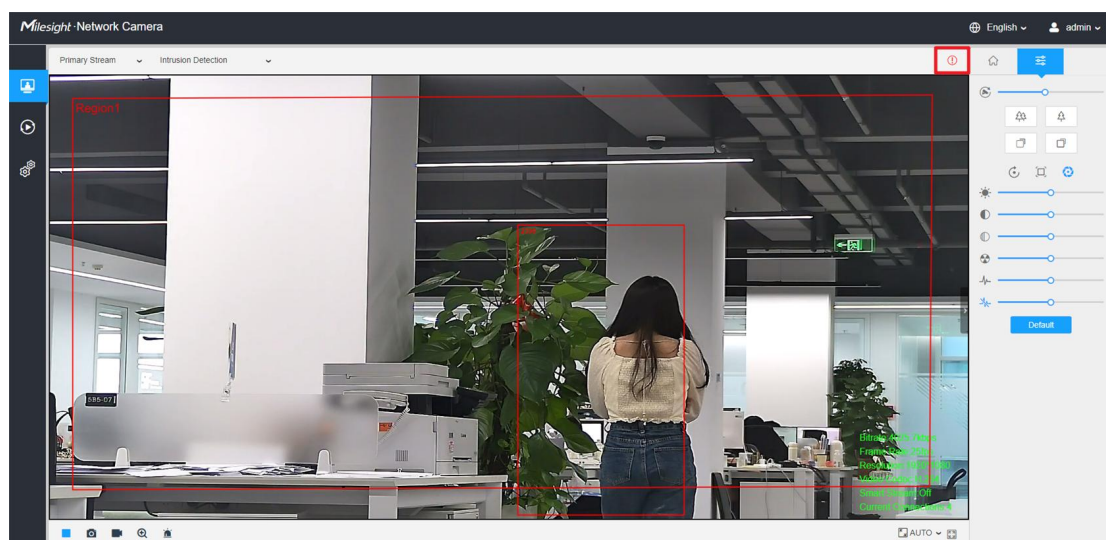
Alarms can now be triggered whether a vehicle/person enters from the outside or appears from inside the selected area, and the stay time can be freely adjusted by setting a time threshold to filter out targets that the user does not care about. It is suitable for various security scenarios and provides

comprehensive security protection for closed places such as villas/warehouses/factories/museums/government agencies.

- The detection box and tracking box will turn red when the alarm action has been triggered. Intrusion Detection also supports setting a variety of alarm actions to inform the alarm, issue the alarm and retain evidence, and can also be set to push the alarm to the third party sever, so that users can more fully control the monitoring scene.



- In addition to the Settings page, the same effect can also be seen in the Live View interface.



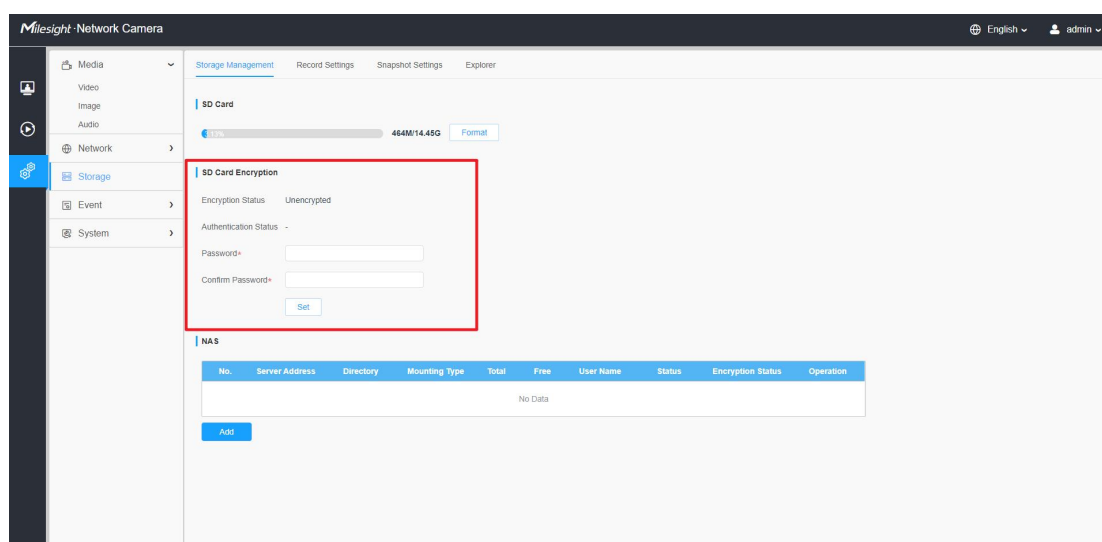
**Note:**

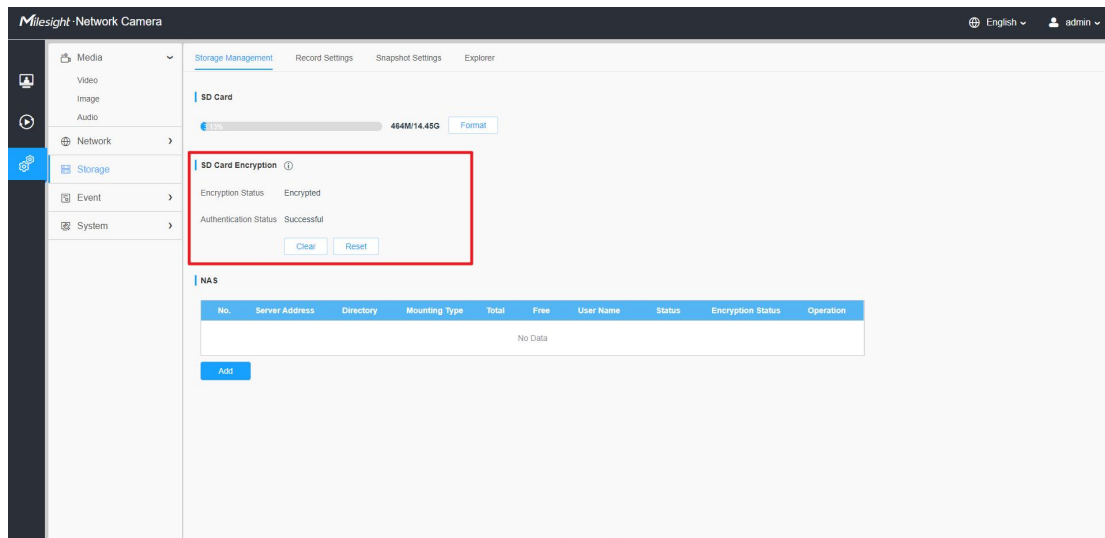
The differences between Intrusion Detection and Region Entrance are listed here.

	outside to inside	appear within the monitored area	(short) passing through the area
Intrusion Detection	can be detected	can be detected	stays below the time threshold will not be detected
Region Entrance	can be detected	undetectable	can be detected

**2) Add SD card encryption.**

Support for encrypting SD cards using the AES256 encryption protocol. Now, it is possible to protect operations on the SD card (whether it is read/write permissions or exporting files) by setting a password. This stringent data protection ensures that sensitive information remains secure. Moreover, encryption functionality is also supported for data in Storage-Explorer and Heat Map features, eliminating concerns about important data being compromised or overwritten.



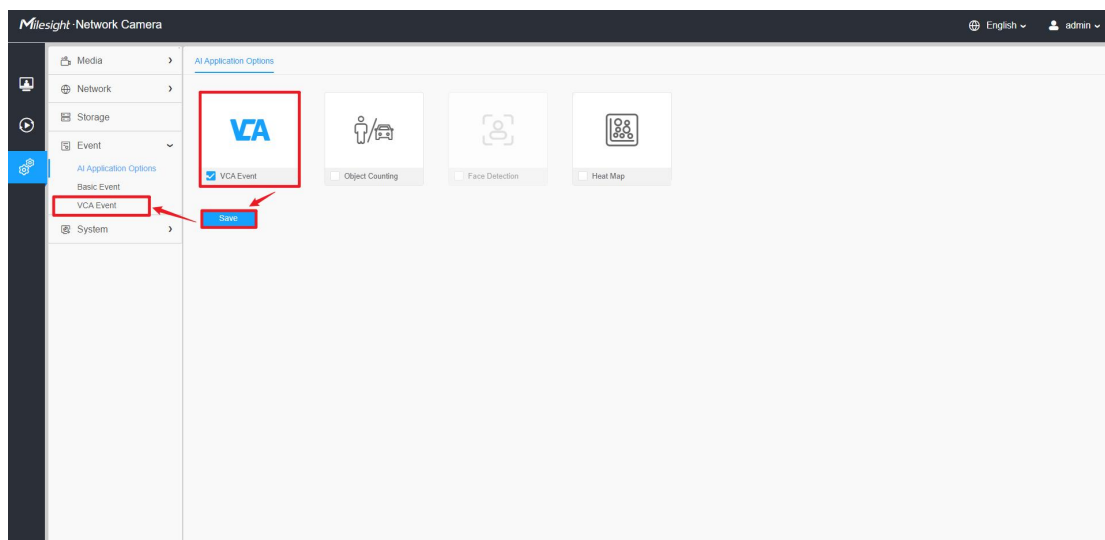


## 2.2 Optimizations

### 1) Optimized the selection process for AI applications.

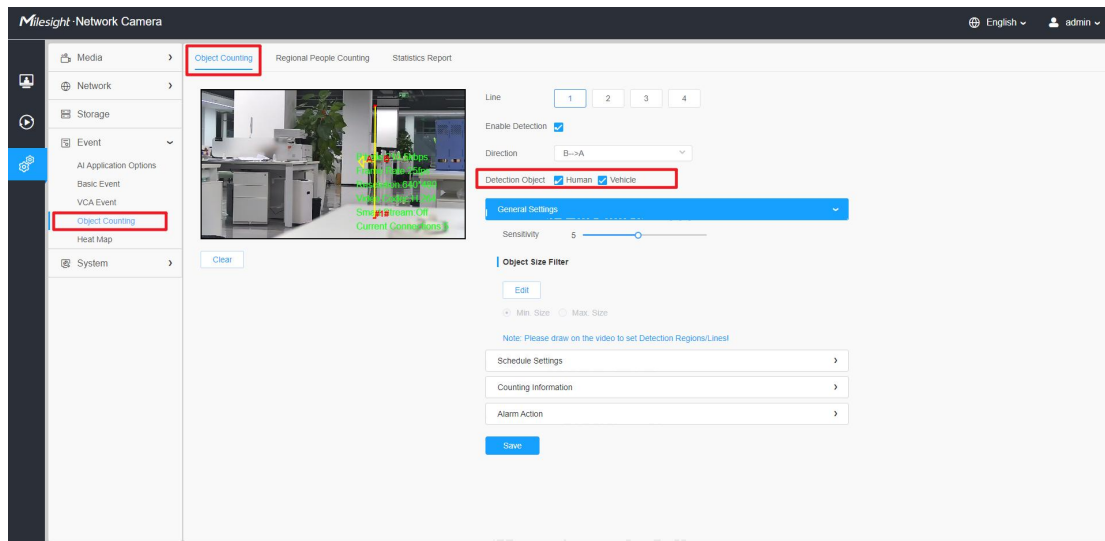
Added the AI Application Options field in Events, allowing users to pre-select AI applications and configure them, greatly enhancing the user's configuration experience.

- Select the desired AI function first, click Save, and the corresponding module will appear under the Event field on the left.



### 2) Merged People Counting and Vehicle Counting into **Object Counting**, allowing simultaneous counting. This enhancement provides better

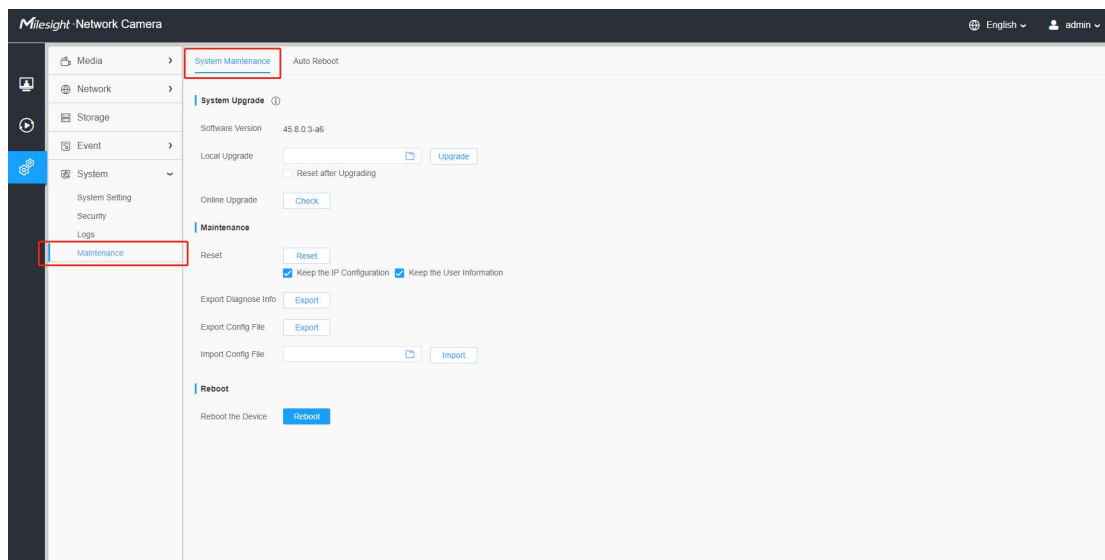
adaptability for complex scenarios that require simultaneous tracking of both people and vehicles.



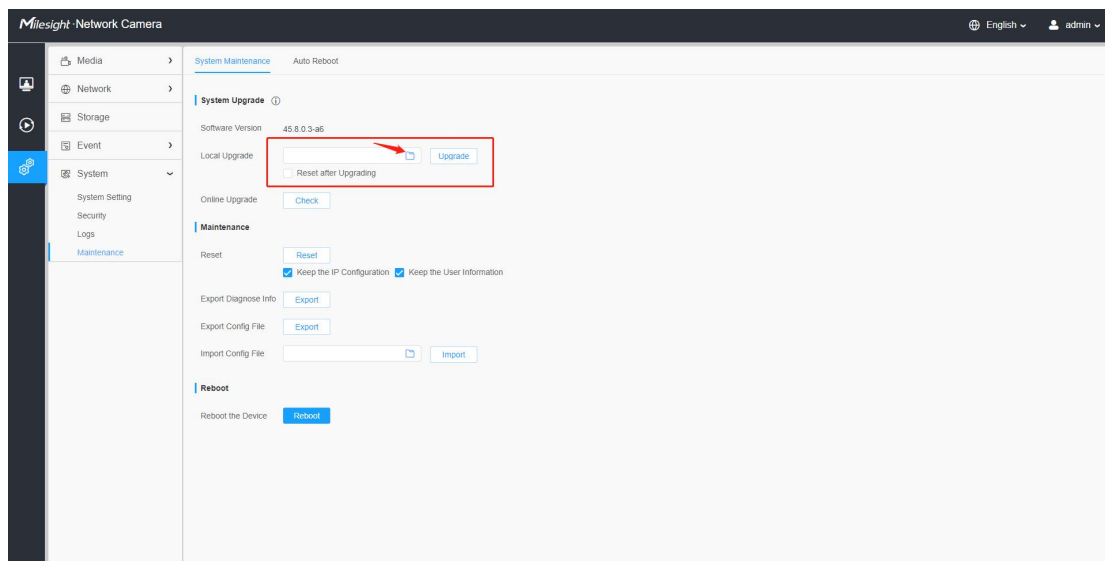
### 3. Upgrade steps

Please check each model with the right firmware version as mentioned above, then upgrade as the following steps:

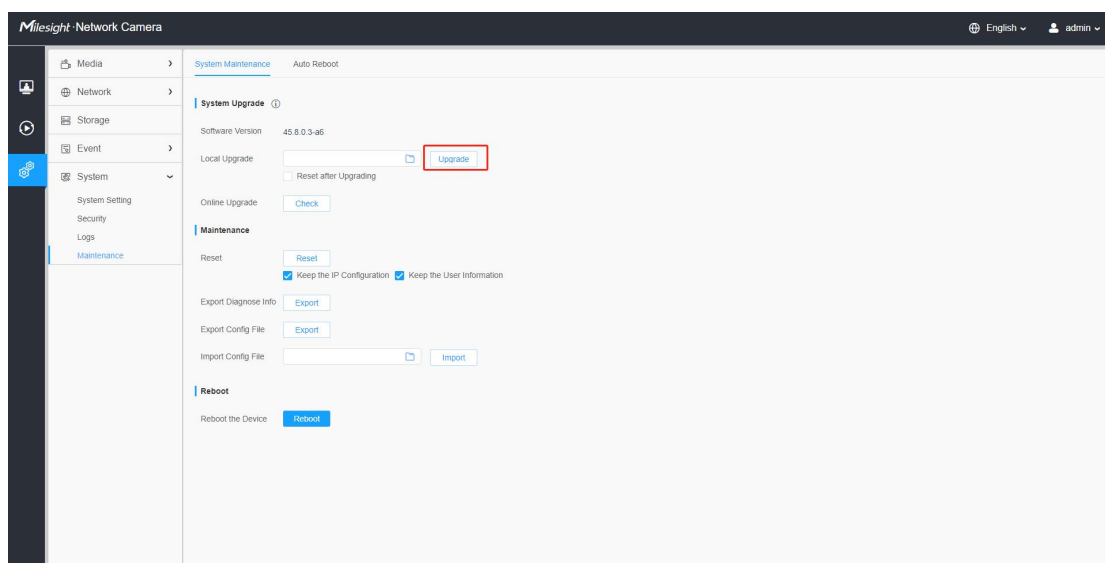
**Step 1:** Go to the web page of Network Camera, Settings -> System -> Maintenance -> System Maintenance.



**Step 2:** Choose file for the upgrade.



**Step 3:** Click the "Upgrade" button, then please wait about 1~3 minutes. The upgrade will be done after the system reboots successfully.



——END——