



# **Milesight Release Note For Network AI Multi-Directional Network**

Firmware Version: 62.8.0.4-r2

Applicable Model: MS-C5321-FPE

Release Date: 15<sup>th</sup> January, 2025

## 1. Overview

Milesight offers a variety of sensor products designed to capture meaningful data. By innovatively applying AI, 5G, and IoT technologies, Milesight brings significant impact to various applications. The company manufactures products with exceptional image quality, unparalleled flexibility, and reliability for the global market. Milesight is pleased to announce the release of the new firmware version 62.8.0.4-r2 for AI Multi-Directional Network Camera.

In this version, Milesight AI Multi-Directional Network Camera has achieved seamless **compatibility with Nx Witness** through the use of Milesight's new plugin, providing a robust and efficient security solution.

Additionally, users **can customize the WLAN network segment** to avoid IP conflicts in various network environments.

Furthermore, known bugs have been fixed in this version.

## 2. Firmware Version Download

For the firmware version, please click the following link to download:

[Firmware Download|The Latest Innovation|Milesight](#)

### 3. What's new

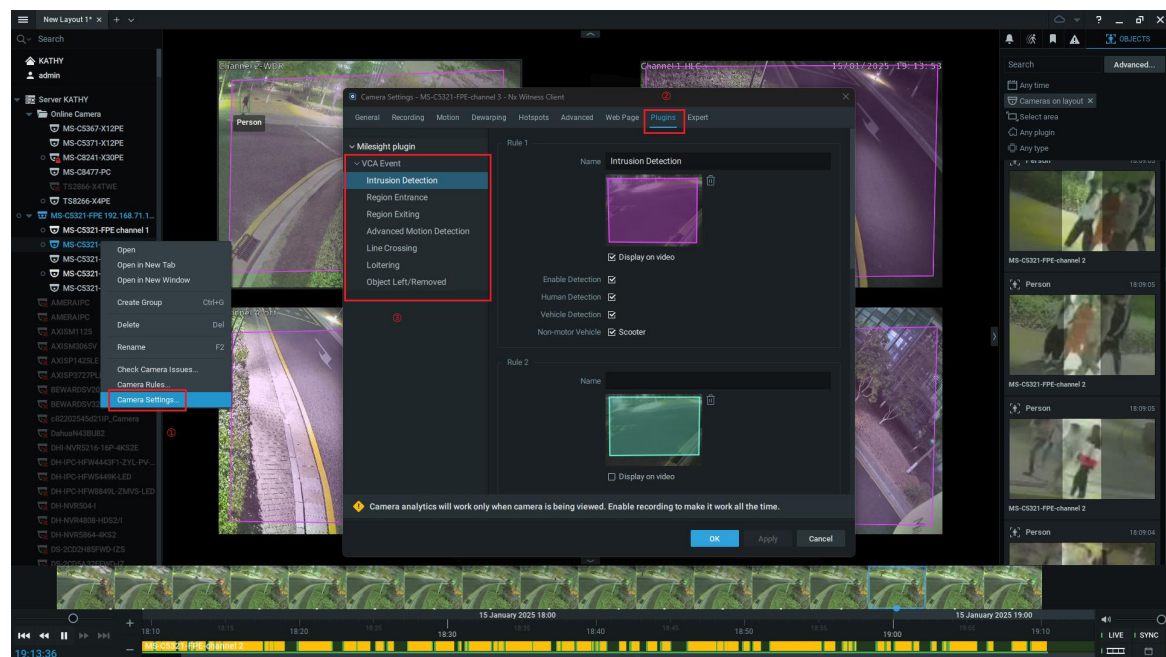
#### 3.1 New Features

##### 1) Compatibility with an extensive range of third-party systems.

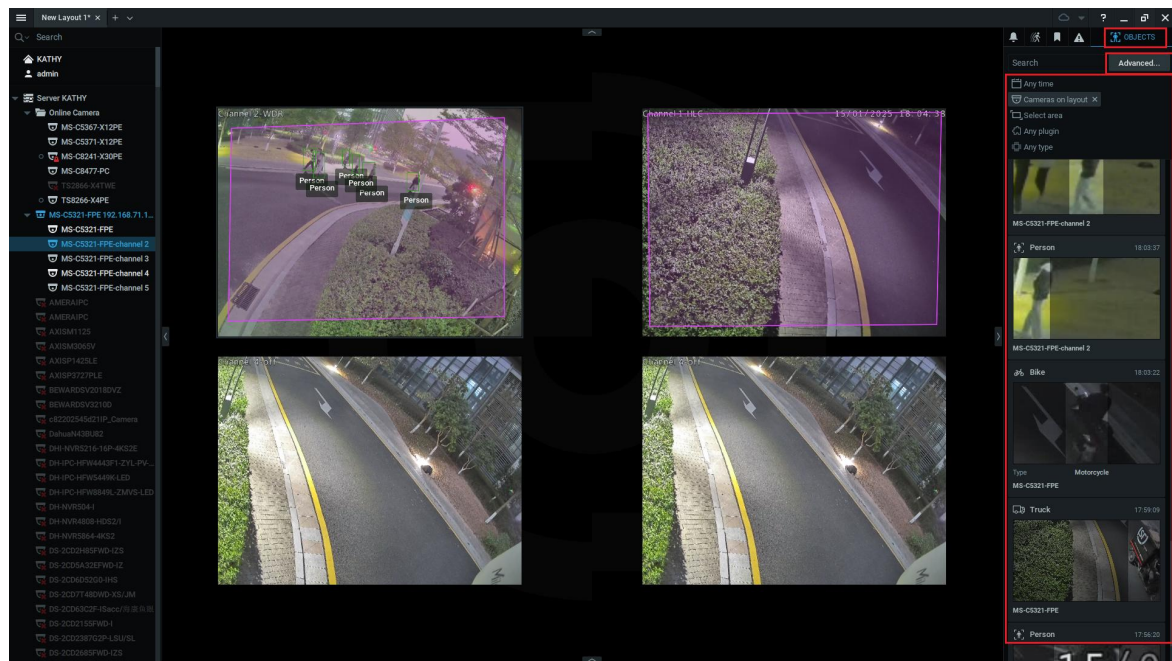
①-Compatible with Nx Witness using the new Milesight plugin.

- ❖ This version achieves seamless compatibility with Nx Witness through Milesight's new plugin. It supports the event configurations and event alarm rules, enabling real-time viewing of target objects as well as advanced object search capabilities within Nx Witness. This integration provides a robust and efficient security solution.

②-Furthermore, the API interface for AI Multi-directional Camera has been perfected to achieve better compatibility with third-party systems, and the compatibility with Onvif G, M, S, and T has been optimized and enhanced.



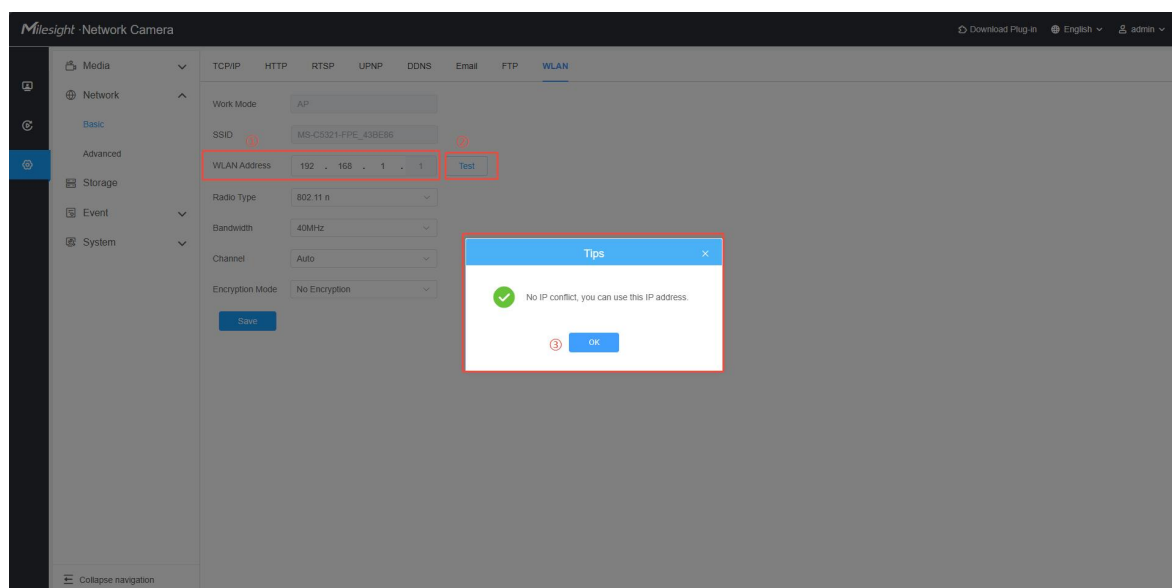
✧Configure event



✧ Preview target object

## 2) Support customizing the WLAN network segment to avoid IP conflicts.

- ❖ Support flexible configuration of WLAN segments to avoid IP address conflicts within users' network environments. Moreover, users can use the "Test" button to check for any conflicts within the network environment. Avoiding IP address conflicts helps maintain the normal operation of the network, reduces potential security risks, and ensures the reliability of network communication and the security of data transmission.



- ❖ When using Smart Tools to modify device information, IP address

verification is also supported. If the WLAN and TCP/IP network segments conflict, the modification will fail, and you will see the prompt "IP network segment conflicts with the WiFi module."

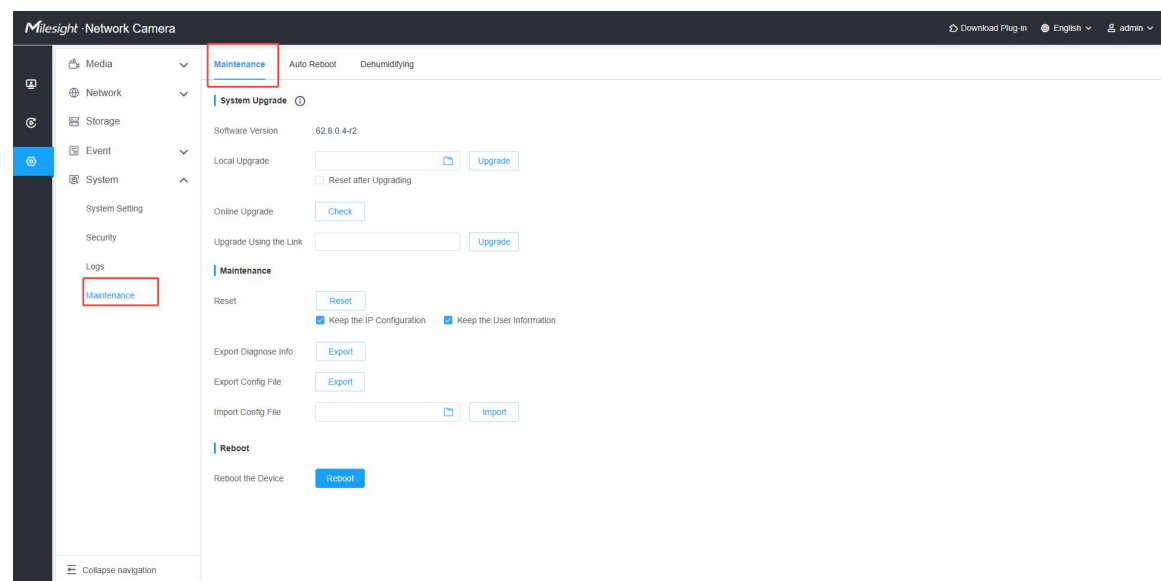
## 3.2 Bug Fixed

- (1) Fixed the problem of the image freeze during focusing.
- (2) Fixed known bugs.

## 4. Upgrade steps

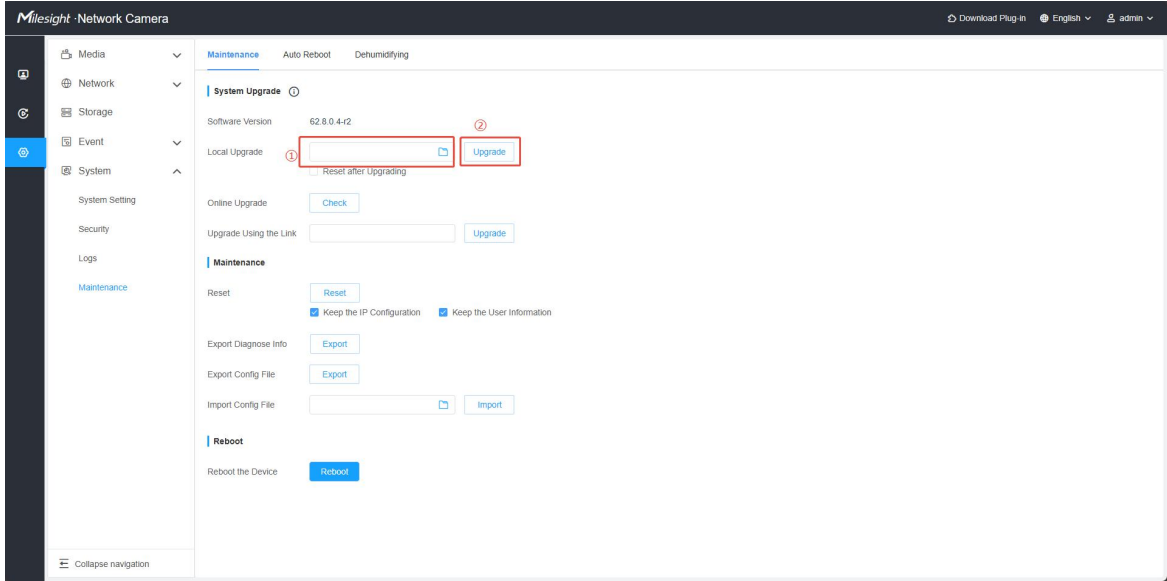
Please check each model with the right firmware version as mentioned above, then upgrade as the following steps:

**Step 1:** Go to the web page of Network Camera, Settings -> System -> Maintenance -> System Maintenance.



**Step 2:** Choose file for the upgrade.

**Step 3:** Click the "Upgrade" button, then please wait about 1~3 minutes. The upgrade will be done after the system reboots successfully.



——END——