



Milesight Release Note For CMS

Firmware Version: 2.4.0.17-r6

Release Date: 8th September , 2023

1. Overview

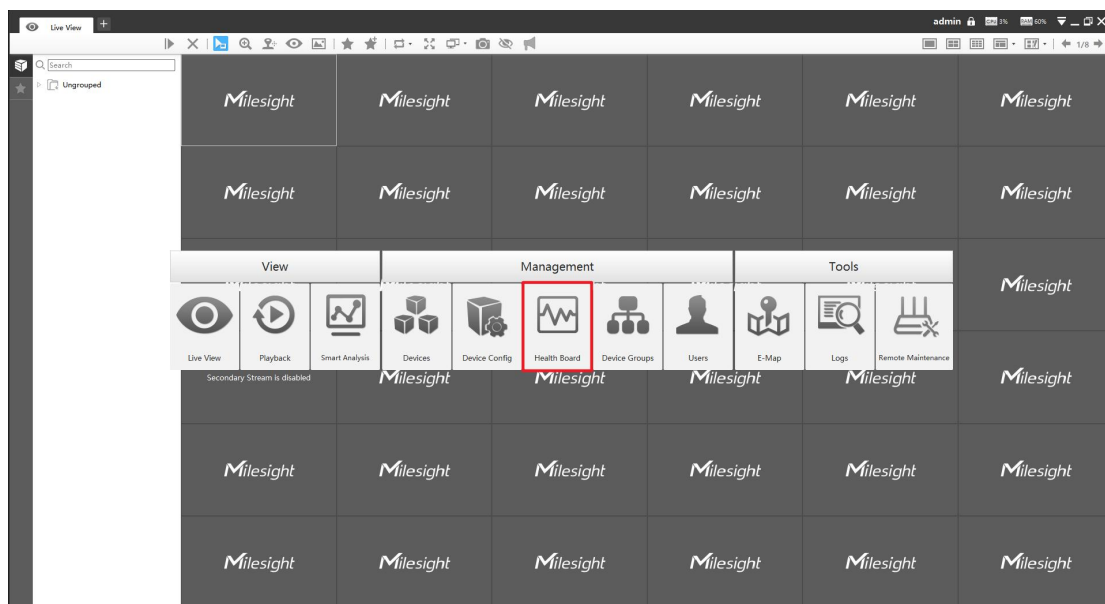
Milesight, the best-in-class AIoT surveillance solution provider that manufactures products with superior image quality, exceptional flexibility and reliability for the global market, is pleased to announce the release of the new firmware version 2.4.0.17-r6 of the Milesight CMS.

In this version, Milesight CMS achieves several brand new functions, such as **Health Board, Broadcast and Three-level Device Grouping**, etc., and optimizes several functions to enhance the customer experience.

2. What's new

2.1 New Features

- 1) Add **Health Board** interface.
- ❖ Add the Health Board function, which can display the health status of all managed devices on a separate page, such as device connection status, recording status, Event status, camera exception status, and NVR exception status. Make it easier for users to manage multiple NVRS or cameras on CMS.



- ❖ The Health Board integrates the health status of devices managed by users. The red font in the left sidebar highlights the devices that have pending issues/events. Click the corresponding field to view the status of the specific device, so that users can quickly locate and solve the problem.

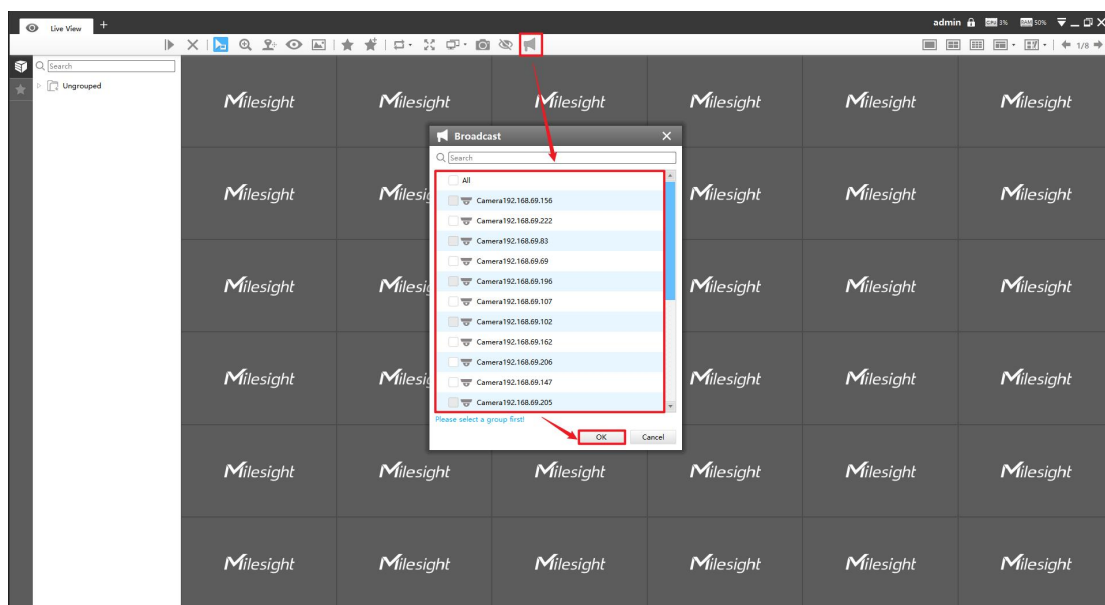
The screenshot displays the 'Health Board' interface. On the left sidebar, there are four summary cards: 'Device Connection' (11 Connected, 14 Disconnected), 'Recording Status' (7 Recording, 3 Failed), 'Event Status' (0 Alarm), and 'Camera Exception Status' (3 Alarm). The main area contains a table titled 'Device Connection' with 20 rows of device data. The table has columns for No., IP Address, ID, Port, Device Name, Type, MAC Address, and Status. The status column uses color coding: red for 'Disconnected' and blue for 'Connected'.

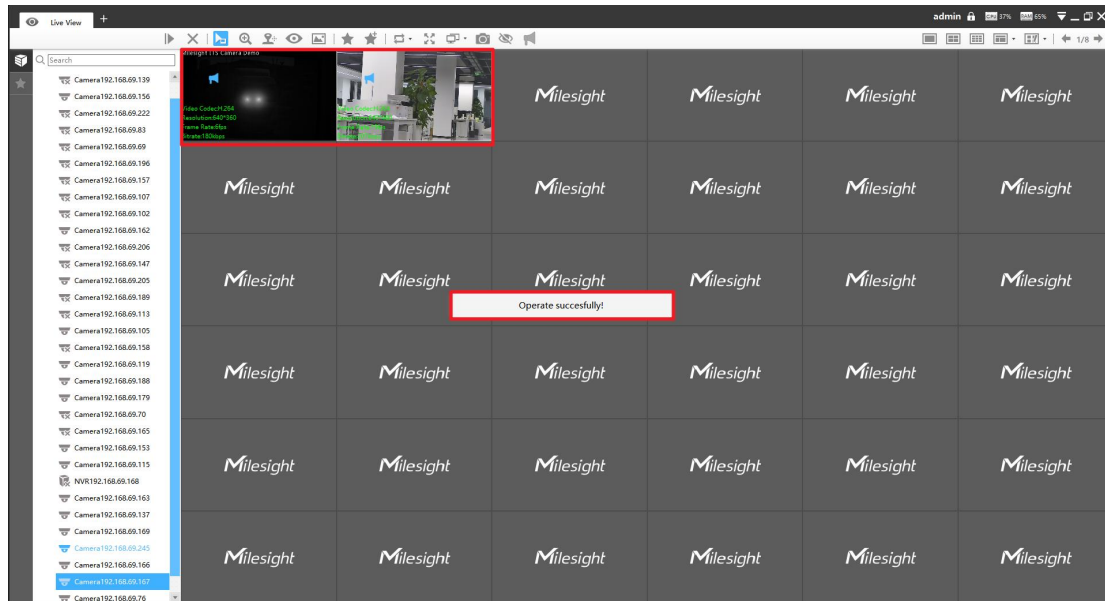
No.	IP Address	ID	Port	Device Name	Type	MAC Address	Status
1	192.168.69.139	-	80	Camera192.168.69.139	Camera	1C3:1611:5430	Disconnected
2	192.168.69.156	-	80	Camera192.168.69.156	Camera	1C3:1628:8C87	Connected
3	192.168.69.222	-	80	Camera192.168.69.222	Camera	1C3:1628:C4C9	Connected
4	192.168.69.83	-	80	Camera192.168.69.83	Camera	1C3:1640:7966	Disconnected
5	192.168.69.69	1	80	Camera192.168.69.69	Camera	1C3:1611:5D1C	Disconnected
6	192.168.69.196	-	80	Camera192.168.69.196	Camera	1C3:1640:059E	Disconnected
7	192.168.69.157	-	80	Camera192.168.69.157	Camera	1C3:1640:7712	Disconnected
8	192.168.69.107	1	80	Camera192.168.69.107	Camera	1C3:1611:5D28	Disconnected
9	192.168.69.102	-	80	Camera192.168.69.102	Camera	1C3:1640:07E1	Disconnected
10	192.168.69.162	-	80	Camera192.168.69.162	Camera	1C3:1650:0501	Disconnected
11	192.168.69.206	1	80	Camera192.168.69.206	Camera	1C3:1611:2D32	Disconnected
12	192.168.69.147	-	80	Camera192.168.69.147	Camera	1C3:1612:2C11	Connected
13	192.168.69.205	-	80	Camera192.168.69.205	Camera	1C3:1640:250D	Connected
14	192.168.69.189	-	80	Camera192.168.69.189	Camera	1C3:162B:2169	Disconnected
15	192.168.69.113	-	80	Camera192.168.69.113	Camera	1C3:162A:0733	Disconnected
16	192.168.69.105	-	80	Camera192.168.69.105	Camera	1C3:1612:91A5	Disconnected
17	192.168.69.158	-	80	Camera192.168.69.158	Camera	1C3:1640:0888	Connected
18	192.168.69.119	-	80	Camera192.168.69.119	Camera	1C3:1611:2900	Connected
19	192.168.69.188	-	80	Camera192.168.69.188	Camera	1C3:162D:4587	Disconnected
20	192.168.69.179	-	80	Camera192.168.69.179	Camera	1C3:162D:0066	Connected

No.	Device Name	IP Address	MAC Address	SD Card Full	SD Card Error	Record Failed	SD Card Uninitialized	No SD Card
1	Camera192.168.69.139	192.168.69.139	1CC3:16:11:54:30					
2	Camera192.168.69.156	192.168.69.156	1CC3:16:2B:8C:87					
3	Camera192.168.69.222	192.168.69.222	1CC3:16:2B:C4:C9					
4	Camera192.168.69.83	192.168.69.83	1CC3:16:40:79:66					
5	Camera192.168.69.69	192.168.69.69	1CC3:16:11:5D:1C					
6	Camera192.168.69.196	192.168.69.196	1CC3:16:40:05:0E					
7	Camera192.168.69.157	192.168.69.157	1CC3:16:40:77:12					
8	Camera192.168.69.107	192.168.69.107	1CC3:16:11:5D:28					
9	Camera192.168.69.102	192.168.69.102	1CC3:16:40:07:E1					
10	Camera192.168.69.162	192.168.69.162	1CC3:16:50:05:01					
11	Camera192.168.69.206	192.168.69.206	1CC3:16:11:2D:32					
12	Camera192.168.69.147	192.168.69.147	1CC3:16:12:2C:11					
13	Camera192.168.69.205	192.168.69.205	1CC3:16:40:25:0D					
14	Camera192.168.69.189	192.168.69.189	1CC3:16:2B:21:69					
15	Camera192.168.69.113	192.168.69.113	1CC3:16:2A:07:33					
16	Camera192.168.69.105	192.168.69.105	1CC3:16:12:91:A5					
17	Camera192.168.69.158	192.168.69.158	1CC3:16:40:08:88					
18	Camera192.168.69.119	192.168.69.119	1CC3:16:11:29:00					
19	Camera192.168.69.188	192.168.69.188	1CC3:16:2D:45:87					
20	Camera192.168.69.179	192.168.69.179	1CC3:16:2D:00:66					

2) Add Podcast function in Live View interface .

- ❖ Supports the use of the computer's public microphone to broadcast to multiple cameras and the cameras of NVR on CMS, providing convenient and unified broadcast operations.

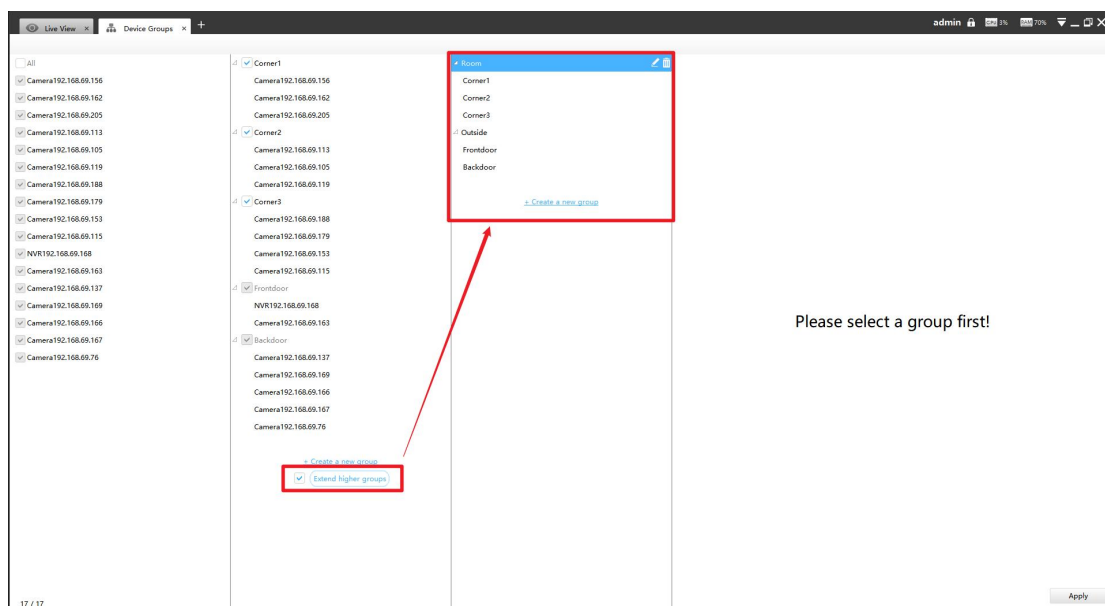


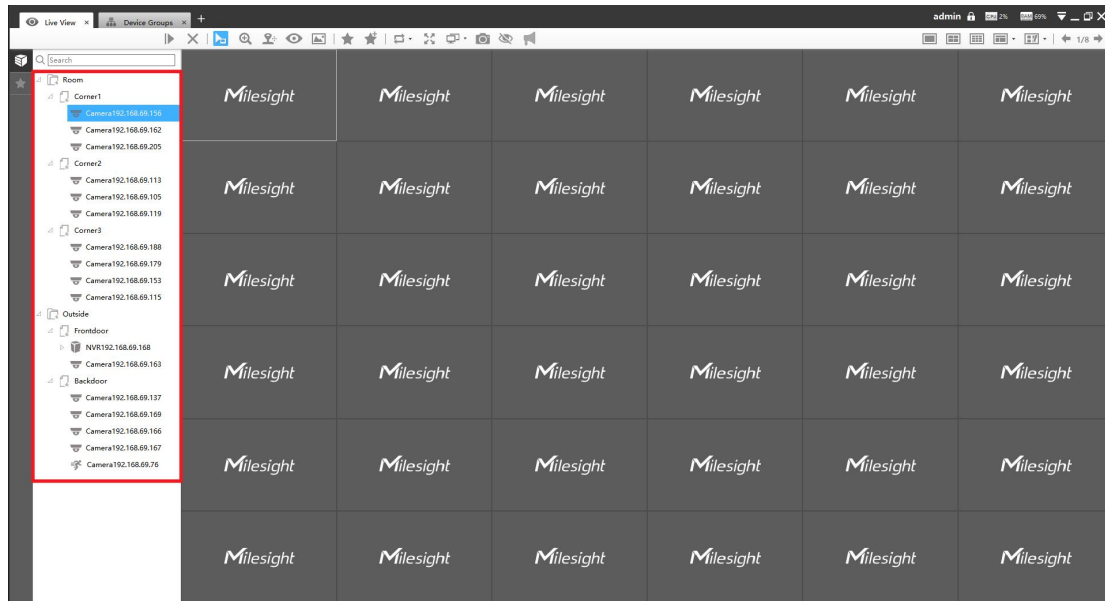
**Note:**

- Make sure the selected camera has Audio I/O.

3) Add Device Grouping function .

- ❖ Support creating device groups and customizing the device group name as needed; up to three-level grouping is supported, facilitating device management for users and improving convenience.





2.2 Optimizations

- 1) Optimized compatibility between NVR and MS-Cxxxx-xxE.
 - 2) Optimized the success rate of P2P connections.
- ❖ Increase the selection of P2P server regions, improve the success rate of P2P connections, and provide a smoother connection experience.

2.3 Bug Fixes

- 1) Fix other bugs.

——END——